

Lockhart Shire Council

Development Servicing Plan for Sewerage Services



August 2018



Lockhart Shire Council

Services	Council provides the essential sewerage services to a population of 1,800 in the Lockhart Local Government Area, in the Riverina region in NSW.
Vision	Provide an environment where people may enjoy a quality of life to which they aspire.
Mission	Provide leadership and meet the community's needs in an equitable and inclusive way that enhances the area's environmental, social and economic qualities.



Development Servicing Plan for Sewerage 2018

Adopted by Council

20 August 2018

Document Control

Revision	3	Date	7 August 2018
Prepared by	WaterOz Pty Ltd; A.B.N. 28 612 790 833 Email: gidi@wateroz.com.au ; Telephone: 0448 480 200		
Author	Alessandra Razera		
Reviewer	Gidi Azar		
Audited by	Angela Dwyer, Hunter H2O		
Audit date	20 April 2018		
Document	LSC_DSP_Rev3		

EXECUTIVE SUMMARY

This Development Servicing Plan (DSP) covers sewerage developer charges for the areas serviced by Lockhart Shire Council (LSC). The service areas are shown in the maps in Appendix A.

This document comprises one sewerage DSP. The developer charges per equivalent tenement (ET) and the proposed cross-subsidy are summarised in the table below.

Sewerage Service Areas	Calculated Developer Charge	Adopted Developer Charge	Cross-subsidy: Resulting Increase in TRB
Lockhart	\$2,541	\$1,362	\$63
The Rock	\$21,064		
Yerong Creek	\$72,883		

LSC will determine the ET loadings of new development and redevelopment and levy developer charges by multiplying the ET loadings by the charge per ET.

The DSP has been prepared in accordance with the 2016 Developer Charges Guidelines for Water Supply, Sewerage and Stormwater issued by the Minister for Lands and Water, pursuant to section 306 (3) of the *Water Management Act, 2000*.

The assets that will serve the areas covered by these DSPs are described in section 5.

The levels of service to be provided by Council are included in section 6.

Developer charges relating to this DSP will be reviewed after a period of 4 to 8 years. In the period between any review, developer charges will be adjusted annually on the basis of the movements in the CPI for Sydney, excluding the impact of GST.

The developer shall be responsible for the full cost of the design and construction of water supply and sewerage reticulation works within subdivisions.

Background information containing all the critical data are included in the background document (Appendix B)

CONTENTS

- 1 Introduction6**
- 2 Glossary7**
- 3 Administration9**
 - 3.1 DSP Name and Areas Covered9
 - 3.2 DSP Boundaries9
 - 3.5 Application of Developer Charges.....9
 - 3.6 Out-of-Sequence Development10
 - 3.7 Indexation of Developer Charge10
 - 3.8 Payment of Developer Charges10
 - 3.9 Developer Charges for Crown Developments.....10
 - 3.10 Dispute Resolution.....10
 - 3.11 Review of DSP.....10
- 4 Demographic and Land Use Planning Information11**
 - 4.1 Current Sewerage ETs and ETs Projection11
 - 4.2 Land Use Information.....12
- 5 Infrastructure13**
- 6 Levels of Service15**
- 7 Design Parameters17**
- 8 Developer Charges Methodology18**
 - 8.1 Timeline18
 - 8.2 Capital Charge18
 - 8.3 Exclusions.....18
 - 8.4 Reduction Amount19
 - 8.5 Developer Charges19
 - 8.6 Levying Lower Charges19
- 9 Sewerage DSP20**
 - 9.1 Scope.....20
 - 9.2 Capital Charge20
 - 9.3 Developer Charge.....20
 - 9.4 Sewerage Cross-Subsidy22
- 10 Reviewing/Updating of Calculated Developer Charges24**
- 11 Background Documents25**
- 12 Other DSPs and Related Contribution Plans26**
- Appendix A27**
 - Sewerage Service Areas Maps27
- Appendix B77**
 - LSC 2018 Sewerage DSP Background Document77
- Appendix C79**
 - Outline of Legislation.....79

LIST OF TABLES

Table 1: DSP Name and Areas Covered.....	9
Table 2: Estimated Sewerage ETs.....	11
Table 3: Sewerage ETs Projection.....	11
Table 4: Sewerage Existing Assets.....	13
Table 5: Summary of Sewerage 10 Year Capital Works.....	14
Table 6: Levels of Service for Sewerage.....	15
Table 7: Discount Rates Used in the Capital Charge Calculation.....	18
Table 8: Sewerage Effective Capital Cost.....	20
Table 9: Sewerage Capital Charge.....	20
Table 10: Sewerage Developer Charge per ET.....	22
Table 11: Impact of Cross-Subsidies on Sewerage Typical Residential Bill.....	23

LIST OF FIGURES

Figure 1: Sewerage Serviced ETs Projection.....	12
Figure 2: LSC Sewerage 10 Year Capital Works Program.....	14
Figure 3: DSP Calculation Timeline.....	18
Figure 4: Impact of Lower Developer Charge on Sewer TRB.....	23

1 INTRODUCTION

Lockhart Shire Council (LSC) provides sewerage services within the Lockhart Local Government Area in NSW.

Developer charges cover part of the cost of providing sewerage infrastructure to new development and redevelopment. Developer charges have two related functions:

- ❑ They provide a source of funding for infrastructure required for urban development
- ❑ They provide signals regarding the cost of urban development thus encouraging less costly forms and areas of development

Section 64 of the *Local Government Act 1993* enables a local government council to levy developer charges for water supply and sewerage. This section refers to Section 306 of the *Water Management Act 2000*. Outline of relevant legislation is provided in Appendix C.

A DSP is a document which details the water supply and/or sewerage developer charges to be levied on development utilising a water utility's water supply and/or sewerage infrastructure.

This DSP document has been prepared in accordance with the 2016 Developer Charges Guidelines for Water Supply, Sewerage and Stormwater issued by the Minister for Lands and Water, pursuant to section 306 (3) of the *Water Management Act, 2000*.

This DSP document supersedes any other requirements related to sewerage developer charges for the areas covered by this DSP. This DSP document takes precedence over any of Council's codes or policies where there are any inconsistencies relating to sewerage developer charges.

This document covers sewerage developer charges in regard to the three service areas served by LSC.

This DSP aim to achieve the following objectives:

- ❑ Allow Council to require a monetary contribution for the provision of sewerage services, proportional to the demands generated by development.
- ❑ Facilitate the provision of sewerage assets to meet the levels of service.
- ❑ Detail the contribution rates and Council's payment policies.

This DSP was prepared using 2016/17 data. The calculated charges where adjusted using 2016/17 Sydney CPI of 2.2% pa to arrive at the calculated developer charges in 2018/19.

2 GLOSSARY

Below is a list of some terms used in DSPs.

Abbreviations	Definitions
Asset	An asset (or part of an asset) including land and headwork's assets that directly provides, or will provide, the developer services to developments within the DSP area for which the Developer Charge is payable
ADWF	Average dry weather flow. One of the design parameters for flow in sewers.
Capital Charge	Capital cost of assets per ET x Return on Investment (ROI) factor
Capital Cost	The current replacement cost (MEERA basis) of assets used to service the development
CPI	Consumer Price Index
Developer Charge	A charge levied on developers to recover part of the capital cost incurred in providing services to new development and redevelopment
Development Area	That part of a water utility area covered by a particular DSP. Also referred to as a DSP Area
DPI Water	Department of Primary Industries Water. The regulator of LWUs.
DSP	Development Servicing Plan
EP	Equivalent Person
ET	Equivalent Tenement
Guidelines	2016 Developer Charges Guidelines for Water Supply, Sewerage and Stormwater, available from http://www.water.nsw.gov.au/___data/assets/pdf_file/0011/663698/2016-Developer-Charges-Guidelines.pdf
LEP	Local Environment Plan
LGA	Local Government Area
LSC	Lockhart Shire Council
LWU	Local water utility (NSW), a local or county council operating as water utility. In this document LWU has the same meaning as a council operating under the <i>Local Government Act 1993</i>
MEERA	Modern Equivalent Engineering Replacement Asset
N/A	Not Applicable
NPV	Net Present Value
OMA	Operation, maintenance and administration (costs)

Abbreviations	Definitions
Post Asset	An Asset that was commissioned on or after 1st January of the specified year or that is yet to be commissioned
Pre-Asset	An asset that was commissioned by a water utility before 1st January of the specified year
PS	Pumping Stations
PV	Present Value
Reduction Amount	The amount by which the capital charge is reduced to arrive at the developer charge. This amount reflects the present value of the capital contribution that will be paid by the occupier of a development as part of future annual charges
ROI	Return on investment. Represents the income that is, or could be, generated by investing money
Service Area	An area serviced by a separate water supply and sewerage system, a separate small town or village, or a new development of over 500 lots (Note: this is standard terminology from the Guidelines)
STP	Sewage Treatment Plant
TBL	Triple Bottom Line. TBL reports are annual performance report issued by DPI Water.
TBA	To be Advised
TRB	Typical residential bill, which is the principal indicator of the overall cost of a water supply or sewerage system. It is the bill paid by a residential customer using the utility's average annual residential water supplied per connected property, and is not a pensioner

3 ADMINISTRATION

3.1 DSP Name and Areas Covered

Table 1: DSP Name and Areas Covered

Sewerage DSP Name	Areas Covered
Lockhart	Lockhart, The Rock and Yerong Creek

The basis for defining the DSP area boundaries is as follows:

- ❑ Lockhart Water Utility has less than 2,000 connected properties, therefore LSC is entitled to agglomerate the three service areas.
- ❑ The post-agglomeration capital charge is lower than the pre-agglomeration capital charge

The areas covered in this DSP are shown in the maps in Appendix A.

3.2 DSP Boundaries

3.3 General

This DSP apply to all land in the LSC LGA that is within the sewerage service areas and will be connected to the sewerage systems after development (subdivision and/or building) or redevelopment (change of use).

These include connection of land with existing residences and/or non-residential building if sewerage developer charges have not been paid previously, or where redevelopment will increase the demand on the sewerage infrastructure.

3.4 Development outside the Boundaries of the DSP

If a development occurs outside the boundaries of the DSP, Council may:

- ❑ Prepare a new DSP for the new development; or
- ❑ Extend the boundaries of this DSP to cover the additional areas; or
- ❑ Enter a special agreement with the developer.

Payment for specific assets that may be required to service the new development will be in accordance with the out-of-sequence development provisions in the Guidelines.

3.5 Application of Developer Charges

Developer charges apply to all building and development activities where Council determines that such activities increase the demand for sewerage services, whether or not such activities require development consent.

When assessing the developer charges applicable to a development or redevelopment, LSC will assess the additional demand that the proposed development will place on the relevant sewerage systems in terms of ETs and will levy developer charges proportional to the number of ETs.

One ET represents a detached residential dwelling. The minimum demand for each development is 1 ET. The developer charges will be levied on all land within the DSP areas for new development and redevelopment (i.e. change of land use).

LSC applies a \$6,500 charge for pumping pit in Low Pressure System Area of The Rock, see map in Appendix A. This is an additional charge to the developer charge defined in this document.

3.6 Out-of-Sequence Development

The provisions of Section 4.3.6 of the guidelines apply to this DSP.

3.7 Indexation of Developer Charge

The developer charges will be adjusted on 1 July each year, starting on 1 July 2019, based on movements in the Consumer Price Index (CPI) for Sydney as published by the Australian Bureau of Statistics.

3.8 Payment of Developer Charges

Developer charges will be determined and levied in accordance with the provisions of this DSP document at the time of considering an application for a compliance certificate under section 305 of the *Water Management Act 2000* or a construction certificate under section 109 of the *Environmental Planning and Assessment Act 1979* or at the time of issuing a notice or other form of written advice, e.g. under the SEPP (Exempt and Complying Development Codes) 2008.

The time limit for payment of developer charges will be included in the notice of determination or will be advised to the developer by a separate notice. The amount of any developer charges not paid within the specified time limit will lapse. Any subsequent determination of developer charges will be made in accordance with Council's DSP current at the time of the determination.

3.9 Developer Charges for Crown Developments

Crown developments for essential community services (e.g. education, health, community services, and law and order) are generally exempt from general developer charges. LWUs may charge these developments only for that portion of the direct connection cost (e.g. for a lead-in main) relating to the Crown development.

Under sections 306 (4) and (5), of the *Water Management Act 2000*, the Minister for Planning may make a determination in regard to developer charges levied on Crown developments.

3.10 Dispute Resolution

Disputes will be resolved in accordance with the provisions of Section 2.9 of the Guidelines. LSC is not a member of the Electricity and Water Ombudsman (EWON)..

3.11 Review of DSP

This DSP shall be reviewed after 4 to 8 years. If appropriate, a new DSP, or DSPs, will be prepared at that time that will replace this DSP.

A shorter review period is permitted if a major change in circumstances occurs.

4 DEMOGRAPHIC AND LAND USE PLANNING INFORMATION

4.1 Current Sewerage ETs and ETs Projection

The basic unit of measure to quantify the loading on a sewerage system is an equivalent tenement (ET). One ET represents the equivalent demand or loading from a detached residential dwelling.

LSC's sewerage services are divided into three service areas. The sewerage ETs in Lockhart, The Rock and Yerong Creek are estimated as a ratio of the metered average dry weather flow (ADWF) in each sewerage treatment plant and the ADWF design capacity of each system multiplied by the occupancy ratio.

At the time of the calculations the best available data was 2016/17 inflow records. The estimated number of sewerage ETs in 2016/17 are shown in Table 2.

Council's adopted growth rate for the three service areas is 0.8% p.a. Sewerage ETs projections are shown in Table 3.

Table 2: Estimated Sewerage ETs

Service Areas	Total annual inflow (kL) (2016/17)*	Estimated daily ADWF (kL/d)	ADWF design capacity (L/EP/d)**	Occupancy ratio***	2016/17 ETs
Lockhart	85308	234	227	2.2	468
The Rock	45829	126	240	2.5	209
Yerong Creek	6036	17	261	2.9	22

Source: *email from Council, 18 September 2017

** emails from Council, 18 September 2017 and 14 December 2017

*** Census Quick Stat 2016

Table 3: Sewerage ETs Projection

Service Areas	Estimated No. of ETs Serviced							
	1996	2017/18	2022/23	2027/28	2032/33	2037/38	2042/43	2047/48
Lockhart	395	472	491	511	532	553	576	599
The Rock	177	211	220	228	238	247	257	268
Yerong Creek	18	22	23	24	25	26	27	28

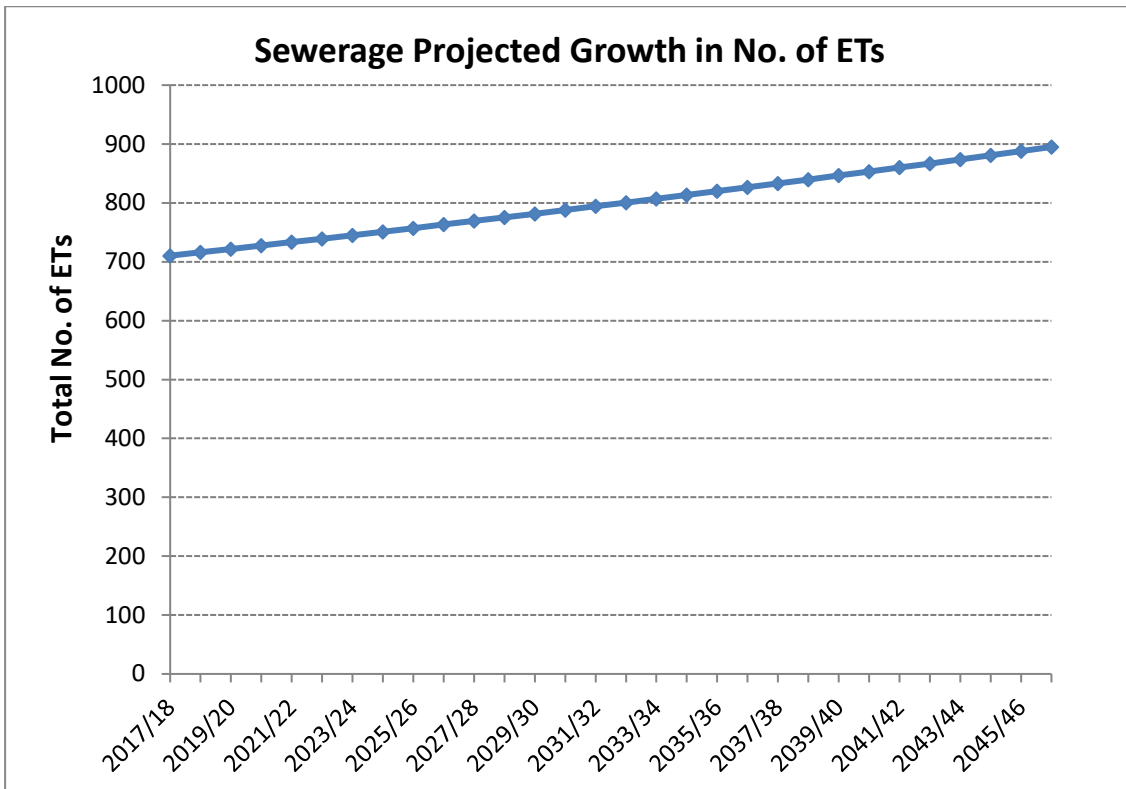


Figure 1: Sewerage Serviced ETs Projection

4.2 Land Use Information

This DSP for sewerage should be read in conjunction with the Local Environment Plan (LEP), Development Control Plan (DCP) and other planning instruments used by LSC.

5 INFRASTRUCTURE

LSC operates three sewerage systems. These DSPs include three sewerage service areas as listed below.

- ❑ Lockhart
- ❑ The Rock
- ❑ Yerong Creek

5.1 Existing Assets

All the existing assets serving LSC sewerage service areas are included in the capital charge calculations except for the following:

- ❑ Assets that are more than 30 years old at the commencement of the DSP
- ❑ Reticulation assets which are typically paid for by developers. Reticulation assets are defined as the local pipes connecting individual properties

The existing assets servicing the areas covered by the sewerage DSP are listed in Table 1 of Appendix B (LSC 2018 DSP Background Document for Sewerage). A summary of the existing assets is provided in Table 4.

Table 4: Sewerage Existing Assets

Service Areas	Current Replacement Cost (2017/18 \$'000)	
	All Existing Assets	Existing Assets Included in DSPs*
Lockhart	\$7,409	\$860
The Rock	\$7,386	\$2,470
Yerong Creek	\$1,179	\$900

Note: Assets valuation exclude contingencies.

*Excluding reticulation and 30-year old assets

Source: Existing Assets Register Final (4Dec17)

5.2 Future Capital Works Program

According to the Guidelines, the calculation of capital charge includes capital cost for new works planned within the next 10 years, excluding reticulation. If Council has developed detailed plans beyond 10 years, capital cost of those items can be considered for the capital charge calculation. In this DSP, 10 years of new works are included in the calculations.

Capital works for renewal planned within the next 10 years may be included if the existing asset is older than 30 years and/or have been removed from the asset register. For this DSP it has been assumed that the capital works for renewals are assigned to assets older than 30 years and are therefore included in the calculation.

The 10 year capital works program required to provide sewerage services to the LSC sewerage service areas are provided in Table 2 of Appendix B (LSC 2018 DSP Background Document for Sewerage). The capital works program is based on the analyses and methodology used in LSC's Asset Management Plan and it was recently reviewed as part of 'Lockhart Sewerage Business: Capital Works and Financial Plan' completed in April 2016. Estimates on the capital works program include contingencies

A summary of sewerage capital works program is provided in Table 5.

Table 5: Summary of Sewerage 10 Year Capital Works

Service Areas	Estimated Cost (2017/18 \$'000)		
	Renewals	New Works	Total
Lockhart	913	41	954
The Rock	869	1,150	2,019
Yerong Creek	179	0.8	180

Source: 2016 Lockhart Sewer Capital Works Plan Version 1.1

The 10 year capital works program for sewerage is shown in Figure 2. Timing of works and expenditure are to be reviewed and updated when required.

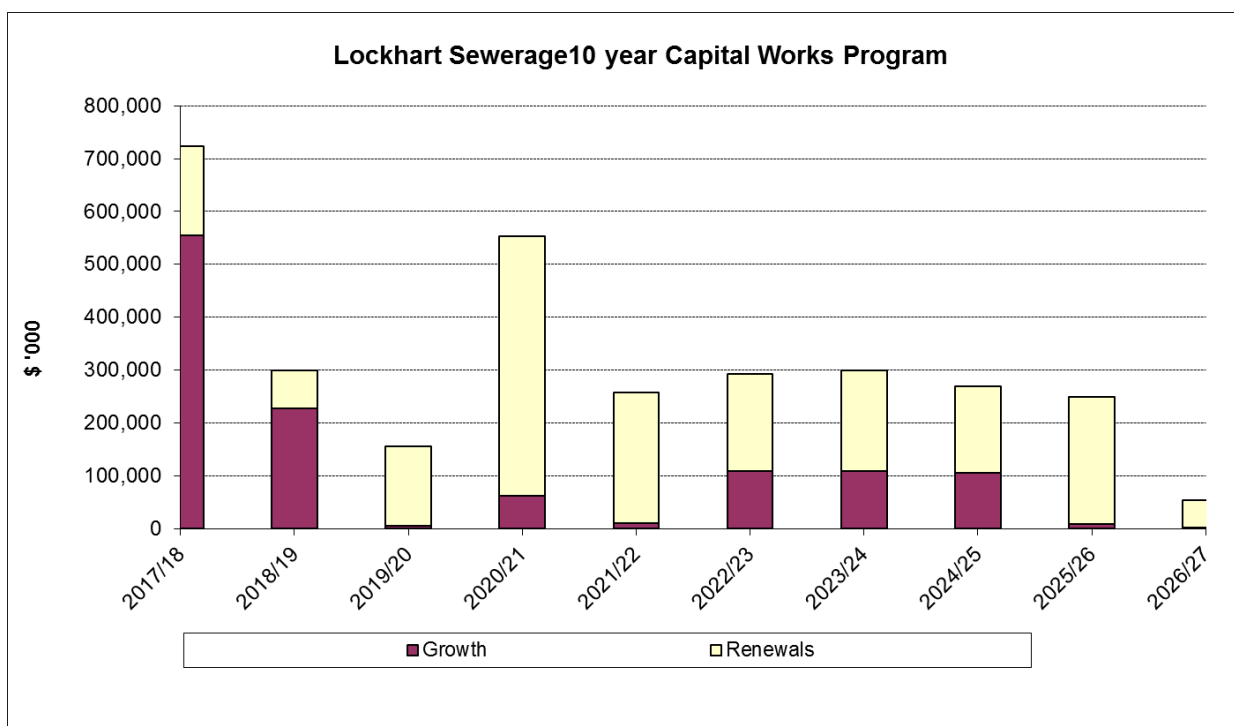


Figure 2: LSC Sewerage 10 Year Capital Works Program

6 LEVELS OF SERVICE

The Levels of Service are the targets, which Council aims to meet; they are not intended as a formal customer contract.

LSC's targets for sewerage levels of service (LOS) are listed in Table 6. Council has not carried out any research on customer expectations. This will be investigated for future updates of the asset management plan. Source: Lockhart Shire Council Sewerage Services Asset Management Plan, Version 2 Draft, May 2013.

Table 6: Levels of Service for Sewerage

Key Performance Measure	Level of Service Objective	Performance Measure Process	Desired Level of Service	Current Level of Service
COMMUNITY LEVELS OF SERVICE				
Quality	Odour Free sewerage Scheme. Sewerage Scheme does not pollute the environment	Level of odour complaints Compliance with Licence requirements	0 pa 100% compliance	Occasional complaints from Yerong Creek re private pumps 100% compliance
Function	Sewerage Scheme collects and disposes of wastewater	Service requests for chokes and surcharging	<5 pa	5
Safety	Does not exposes community to health hazards	Incidence of substandard effluent being discharged to environment	0 pa	0
TECHNICAL LEVELS OF SERVICE				
Operations	Pump stations regular cleaning STWs inspected and cleaned Records of operations	Regular washing down and inspection Regular inspections and cleaning Emptying grease traps Testing and recording of inflows and outflows	Weekly for each pump station Weekly for each STP Daily Biannually	Weekly Weekly Weekly Weekly

Key Performance Measure	Level of Service Objective	Performance Measure Process	Desired Level of Service	Current Level of Service
		Testing of effluent quality		
Maintenance	Reactive maintenance is completed Programmed maintenance of pumps Programmed maintenance of STWs	Compliance with agreed time frames Pumps checked and repaired Maintenance program completed	Response in less than 2hrs Annually Annually	
Renewal	Renewal of elements before unacceptable failure rate	Maintenance Costs	Maintenance costs remain static or decrease	Maintenance Costs remain static
Upgrade/New	Compliance with higher environmental and health requirements	Compliance with Environmental and health requirements	100% compliance	100% compliance

7 DESIGN PARAMETERS

Investigation, design and construction of sewerage components are based on the following:

- ❑ Council's levels of service (Refer to section 6 above)
- ❑ Manual of Practice: Sewer Design (1987)
- ❑ Manual of Practice: Sewage Pumping Station Design (1986)
- ❑ WSAA Sewerage Code of Australia - WSA 02-2002
- ❑ WSAA Pressure Sewerage Code of Australia - WSA 07 - 2007
- ❑ Lockhart Shire Council Sewerage Services Asset Management Plan, Version 2 Draft, May 2013.

8 DEVELOPER CHARGES METHODOLOGY

8.1 Timeline

Figure 3 illustrates the timeline of the DSP calculation, including the discounting of existing assets, future assets and ETs.

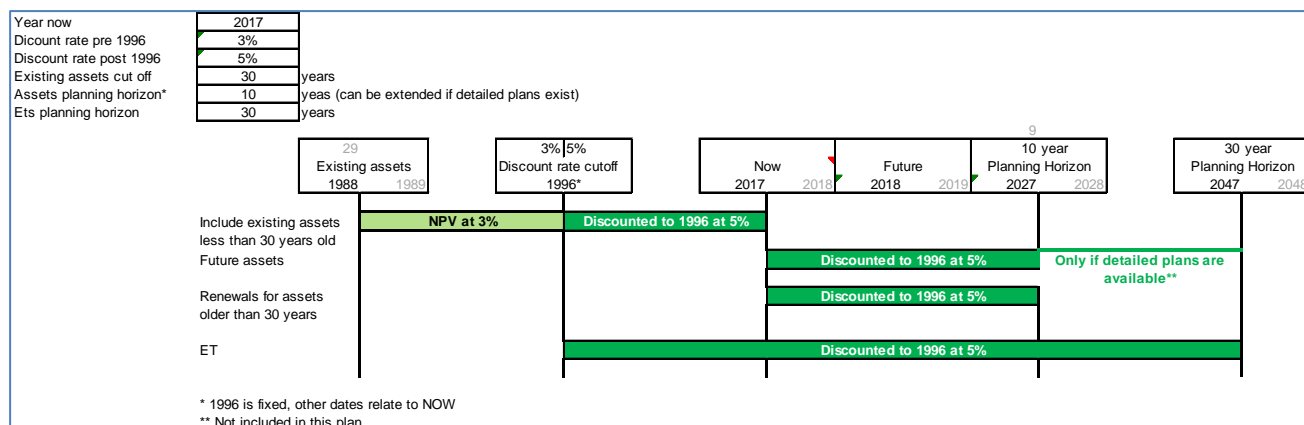


Figure 3: DSP Calculation Timeline

8.2 Capital Charge

The capital charges are calculated for LSC's sewerage service areas based on the existing and future assets providing the services to the service areas. The capital charge is calculated per ET by dividing PV of effective capital cost of the assets by the PV of number of new ETs.

Effective capital cost is the percentage of capital cost utilised by the post 1995/96 new ETs.

The outcomes of sewerage capital charges calculations are provided in Table 3 in Appendix B and summarised in section 9.

Generally, the capacity of an asset would not be fully utilised until some years after construction of the asset. The capital charge calculation takes account of the period to full take-up of the capacity of the asset.

The Return on Investment (ROI) is based on the holding cost of early investment and recovery of the cost over time. The annual payments have to provide a return on the investment to reflect the discounting of future payments. In accordance with IPART's Determination 9, 2000, the capital charges are calculated based on the discount rates listed in Table 7.

Table 7: Discount Rates Used in the Capital Charge Calculation

Assets	Discount Rate
Pre-1996 assets	3% pa
Post 1996 assets	5% pa

8.3 Exclusions

The developer charges do not cover the costs of reticulation and assets more than 30 years old.

LSC does not levy charges for the construction of reticulation pipework upon completion of the development.

8.4 Reduction Amount

The reduction amount represents the portion of the cost of assets that LSC expects to recover through its annual bills to the new developments.

Council has adopted the Net Present Value (NPV) of annual bills method to calculate the reduction amount. This method calculates the reduction amount as the NPV of 30 years net income from annual charges (revenue from annual bills less OMA) for the development area.

8.5 Developer Charges

Developer charge is the capital charge minus the reduction amount. The outcomes of sewerage developer charges calculations are included in section 9.

8.6 Levying Lower Charges

In setting the developer charges, LSC may consider financial, social and environmental factors to determine a level of developer charges that is balanced, fair and meet Council's objectives.

Council resolved to adopt developer charges that are lower than the calculated developer charges. LSC adopted sewerage developer charges is provided in section 9.3.

Adopting developer charges that are lower than the calculated amount means that existing residents subsidise new development. The extent of this cross subsidy needs to be disclosed in the DSP.

9 SEWERAGE DSP

9.1 Scope

The sewerage services are divided into three service areas. The boundaries of the sewerage service areas considered in this DSP are shown in Appendix A.

9.2 Capital Charge

All the existing assets (excluding more than 30 years old assets and reticulation) and new capital works (10 years) required to provide sewerage services have been included in the capital charge calculation.

The percentage of capital cost of assets utilised by new ETs after 1995/96 are considered for the capital charge calculation. The calculated capital charges for each service area are summarised in Table 8 and Table 9. Detailed calculation is provided in Table 3 of Appendix B.

Table 8: Sewerage Effective Capital Cost

Service Areas	Capital Cost (2017/18 \$'000)		Percentage of Capital Cost Utilised by ETs after 1995/96	Effective Capital Cost (2017/18 \$'000)	
	Existing Assets	10 Year Future Capital Works		Existing Assets	10 Year Future Capital Works
Lockhart	861	954	34%	293	324
The Rock	2,470	2,019	34%	840	687
Yerong Creek	899	180	34%	306	61

Note: Calculation rounding errors may be applied

Table 9: Sewerage Capital Charge

Service Areas	PV of Effective Capital Cost (2017/18 \$'000)		PV of new ETs		Capital Charge per ET (2017/18 \$)
	Pre-1996 Assets	Post 1996 Assets (existing + future)	@3%	@5%	
Lockhart	1,096	309	100	69	4,455
The Rock	207	536	45	31	21,931
Yerong Creek	-	224	5	3	69,169

Note: Calculation rounding errors may be applied

9.3 Developer Charge

Where the capital charges of two or more service areas are within 30%, they are agglomerated into a single DSP. Council resolved to levy the same charge to all three service areas, resulting in the amalgamation of the three service areas to a single DSP.

Developer charge is the capital charge minus the reduction amount. Developer charge detailed calculation is provided in Table 4 in Appendix B.

The reduction amount calculation methodology is provided in section 8.4 and the calculation is provided in Table 5 of Appendix B.

Year	Total ETs	New ETs	PV Factor	PV of new ETs (@5%)	Cumulative new ETs	Net income from new ETs	PV of Net income from new Ets (@5%)
2017/18	705						
2018/19	710	6	1.00	6	6	\$1,081	\$1,081
2019/20	716	6	0.95	5	11	\$2,170	\$2,066
2020/21	722	6	0.91	5	17	\$3,268	\$2,964
2021/22	728	6	0.86	5	23	\$4,374	\$3,779
2022/23	733	6	0.82	5	29	\$5,490	\$4,517
2023/24	739	6	0.78	5	35	\$6,615	\$5,183
2024/25	745	6	0.75	4	40	\$7,748	\$5,782
2025/26	751	6	0.71	4	46	\$8,891	\$6,318
2026/27	757	6	0.68	4	52	\$10,042	\$6,797
2027/28	763	6	0.64	4	58	\$11,203	\$7,222
2028/29	769	6	0.61	4	65	\$12,373	\$7,596
2029/30	775	6	0.58	4	71	\$13,553	\$7,924
2030/31	782	6	0.56	3	77	\$14,742	\$8,209
2031/32	788	6	0.53	3	83	\$15,940	\$8,454
2032/33	794	6	0.51	3	89	\$17,149	\$8,661
2033/34	801	6	0.48	3	96	\$18,366	\$8,835
2034/35	807	6	0.46	3	102	\$19,594	\$8,976
2035/36	813	6	0.44	3	109	\$20,831	\$9,089
2036/37	820	7	0.42	3	115	\$22,078	\$9,174
2037/38	826	7	0.40	3	122	\$23,336	\$9,235
2038/39	833	7	0.38	2	128	\$24,603	\$9,273

Year	Total ETs	New ETs	PV Factor	PV of new ETs (@5%)	Cumulative new ETs	Net income from new ETs	PV of Net income from new Ets (@5%)
2039/40	840	7	0.36	2	135	\$25,880	\$9,290
2040/41	846	7	0.34	2	142	\$27,168	\$9,287
2041/42	853	7	0.33	2	149	\$28,466	\$9,268
2042/43	860	7	0.31	2	155	\$29,774	\$9,232
2043/44	867	7	0.30	2	162	\$31,093	\$9,182
2044/45	874	7	0.28	2	169	\$32,422	\$9,118
2045/46	881	7	0.27	2	176	\$33,762	\$9,043
2046/47	888	7	0.26	2	183	\$35,113	\$8,957
2047/48	895	7	0.24	2	190	\$36,474	\$8,861
		190		100			\$ 223,370

Reduction Amount:	$\$223,370 / 100 =$	\$2,244
-------------------	---------------------	---------

LSC sewerage calculated and proposed developer charges is provided in Table 10.

Table 10: Sewerage Developer Charge per ET

Service Areas	Capital Charge	Reduction Amount	Calculated Developer Charge 2017/18	Council Proposed Developer Charge 2018/19
Lockhart	4,455	2,244	2,211	1,362
The Rock	21,931		19,687	
Yerong Creek	69,169		66,924	

9.4 Sewerage Cross-Subsidy

LSC has elected to levy developer charge lower than the calculated for the three service areas. Council elected to cap the developer charges for their small villages in order to maintain affordability, avoid 'stranded' assets in the villages and be attractive to development when compared to other towns cities in the region. The proposed developer charge is the same as the existing implemented charge.

The developer charges income difference needs to be subsidised by existing customers through annual bills (i.e. typical residential bill - TRB). To balance the difference in income from the calculated developer charge and proposed developer charge, Council will need to increase the TRB as shown in Table 11. TRB impact is graphically shown in Figure 4.

The cross-subsidy, resulting from capping of developer charges must be disclosed in the DSP, the utility’s Annual Report, annual Operational Plan and in communication materials for consultation with stakeholders

Table 11: Impact of Cross-Subsidies on Sewerage Typical Residential Bill

Option	Long term TRB (2017/18 \$)	TRB Difference	Resulting Increase in TRB
Calculated- Weighted Average Developer Charge -\$9,345	\$495*	-	
Proposed- Weighted Average Developer Charge -\$1,362	\$559	\$64	12.8%

*Source: Summary of Data - LSC DSP

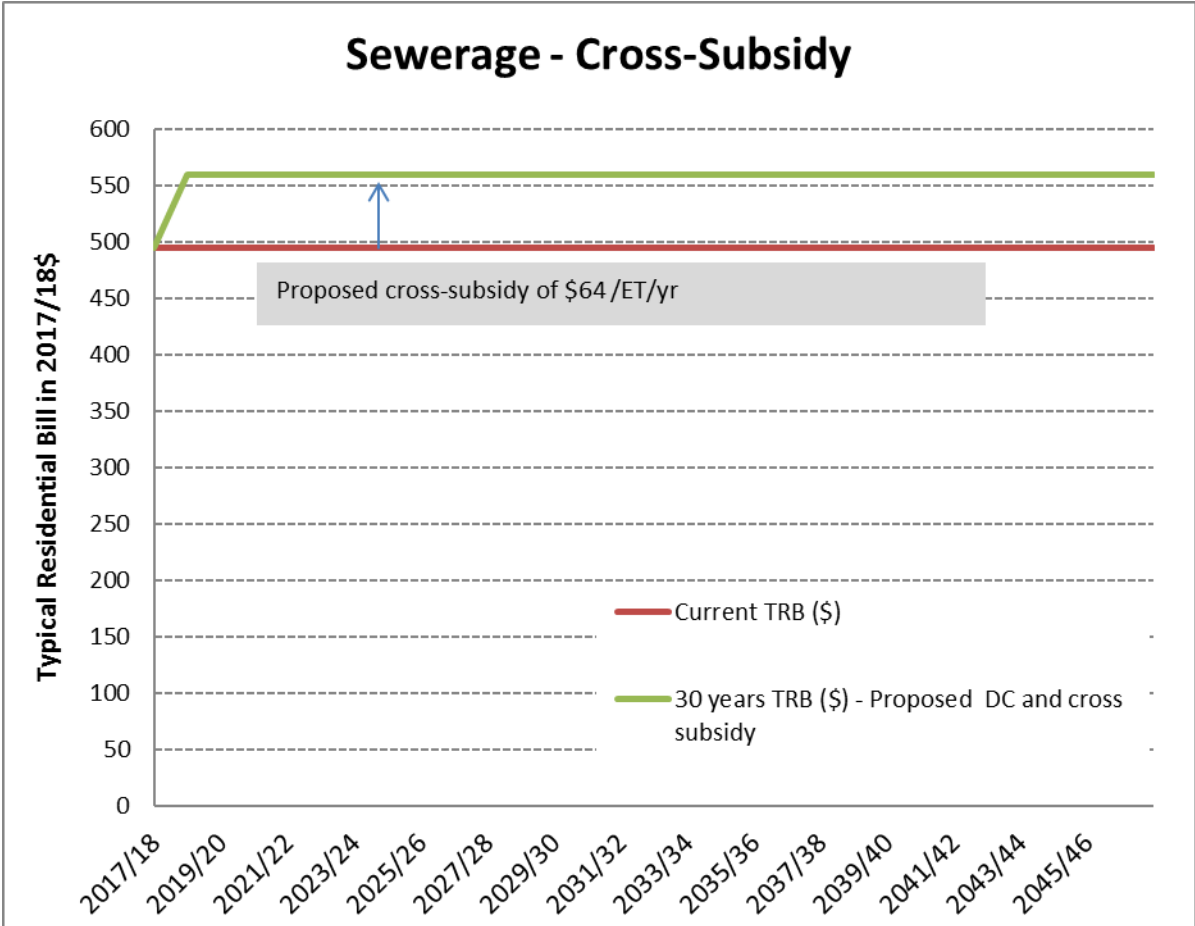


Figure 4: Impact of Lower Developer Charge on Sewer TRB

10 REVIEWING/UPDATING OF CALCULATED DEVELOPER CHARGES

Developer charges relating to these DSPs shall be reviewed by the LWU after a period of 4 to 8 years. In the period between any reviews, developer charges will be adjusted on 1st July each year on the basis of movements in the CPI for Sydney as required by the Developer Charges Guidelines (excluding the impact of GST). Developer charges will be those charges determined by Council from time to time and will be published in Council's Annual Fees and Charges.

11 BACKGROUND DOCUMENTS

Background information and calculations related to these DSPs are available in the following documents:

- ❑ Developer Charges Guidelines for Water Supply, Sewerage and Stormwater - 2016, published by Department of Primary Industries, DPI Water
- ❑ LSC 2018 DSP Background Document for Sewerage (Appendix B)
- ❑ LSC Sewerage TBL Performance Report (2015/16)
- ❑ Lockhart Sewerage Business: Capital Works Plan and Financial Plan, Version 1.2, April 2016
- ❑ LSC Special Schedules 3 to 6, 30 June 2017

Note: The background documents contain detailed calculations for the capital charges, reduction amount and developer charges, including asset commissioning dates, size/length of assets, MEERA valuation of assets, 10 years capital works program, assets current and future capacities. For copies of the background documents please contact Council's Engineering & Environmental Services Department.

12 OTHER DSPs AND RELATED CONTRIBUTION PLANS

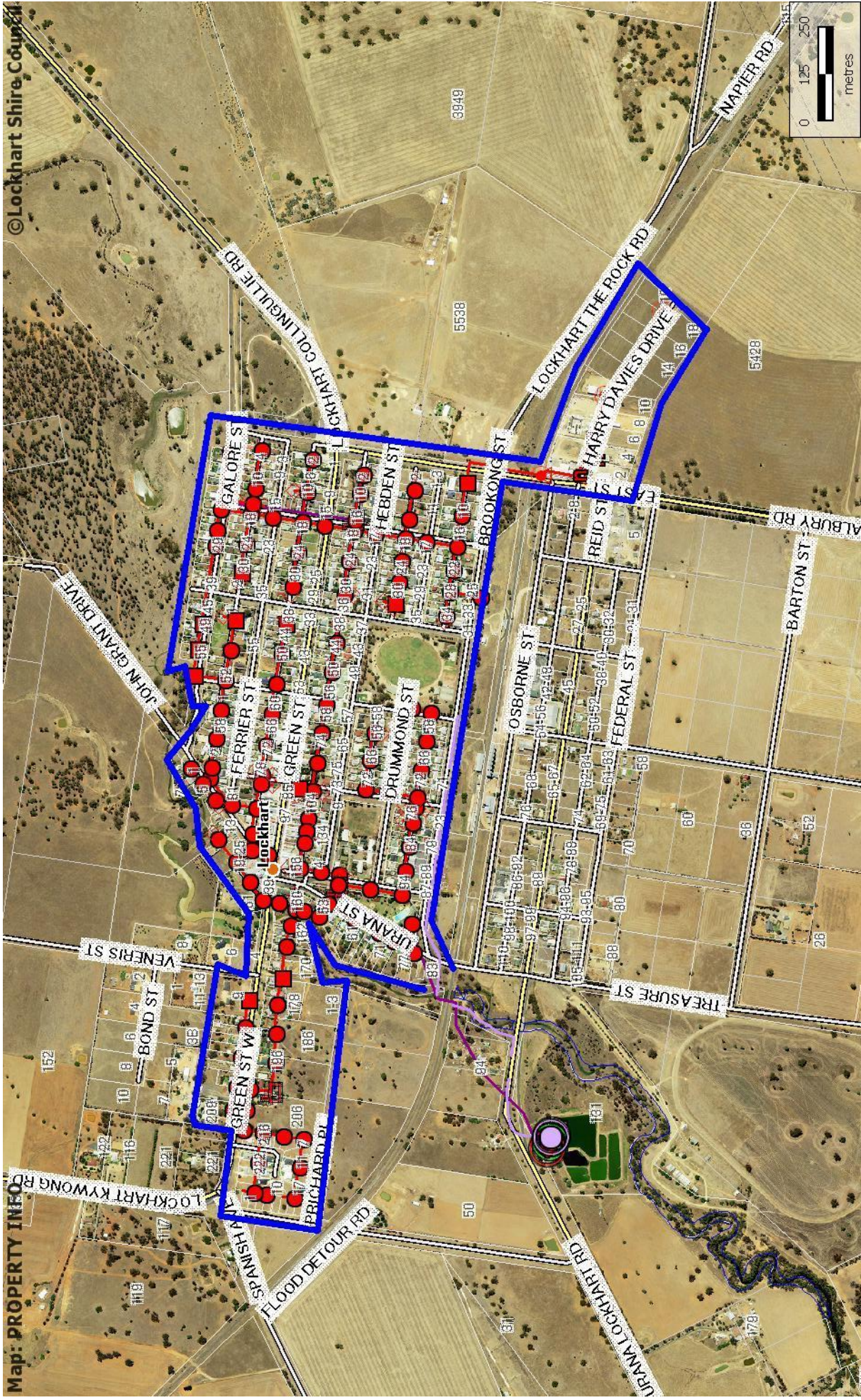
Other related plans include:

- ❑ S94 plans developed by Lockhart Shire Council

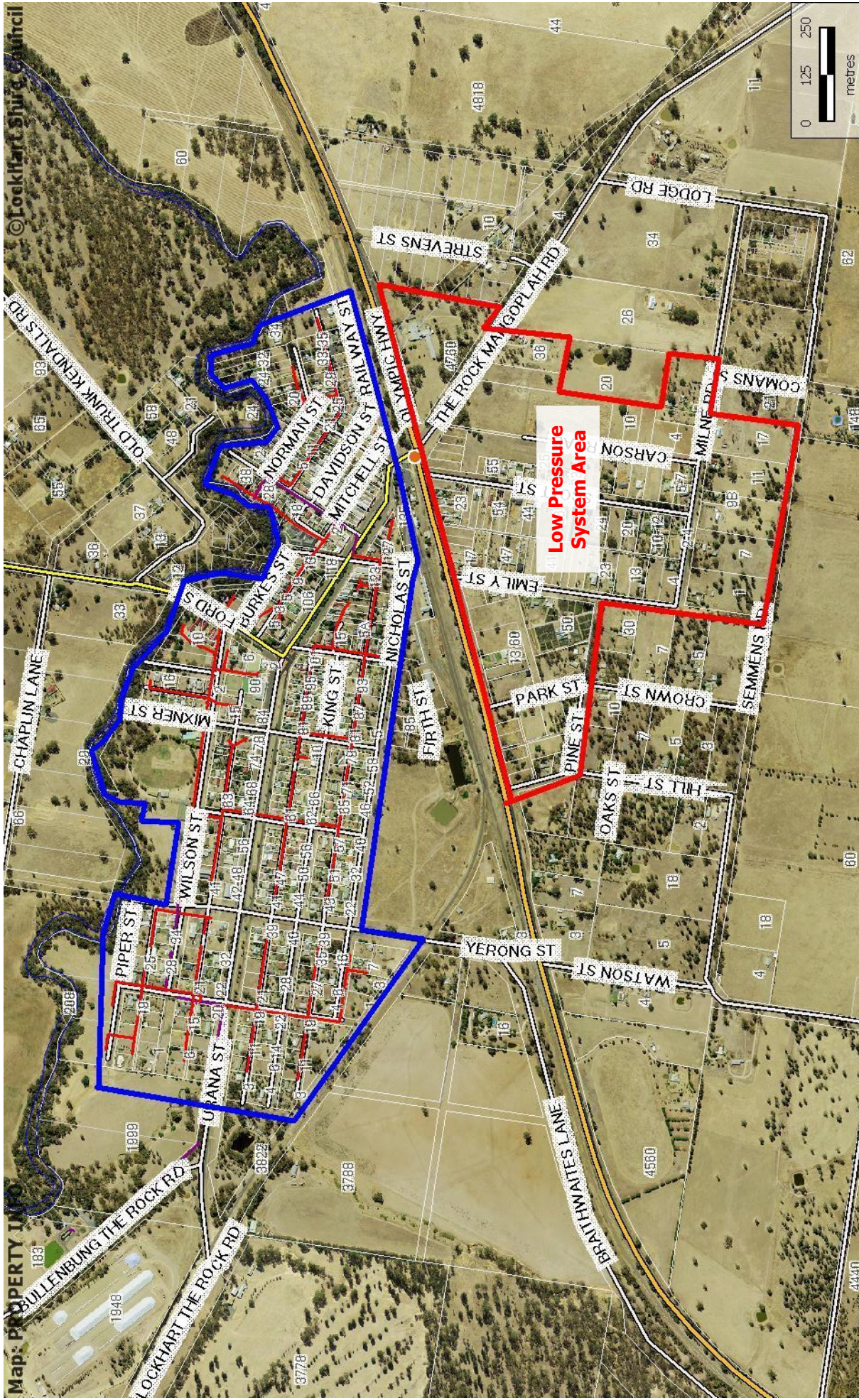
Appendix A

Sewerage Service Areas Maps

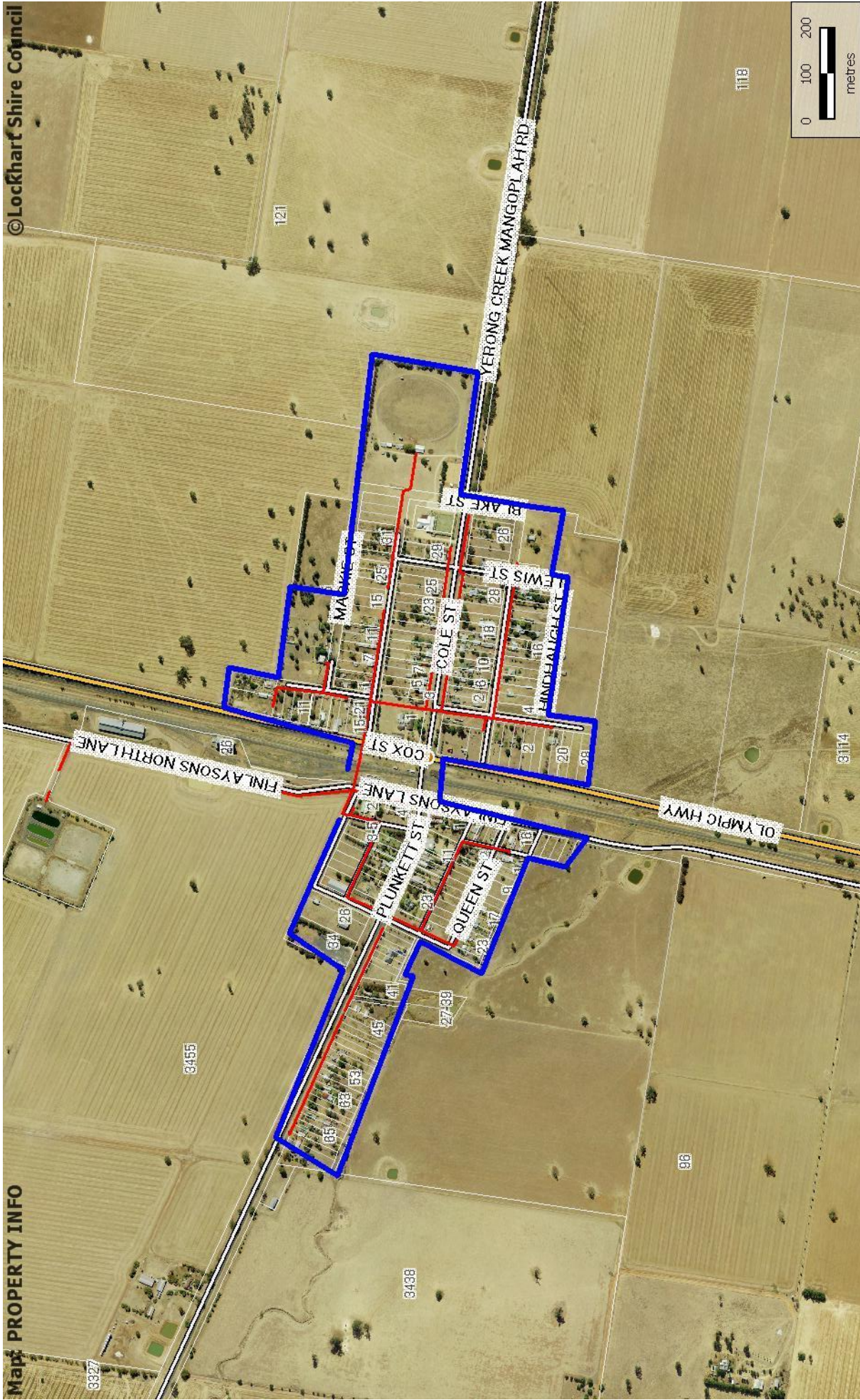
Lockhart Service Area – Sewerage



The Rock Service Area



Yerong Creek Service Area



Map: PROPERTY INFO

© Lockhart Shire Council

Appendix B

LSC 2018 Sewerage DSP Background Document

The background document comprises:

Table 1 - Existing Assets

Table 2 - Future Assets

Table 3 - Capital Charge Calculation

Table 4 - Developer Charge Calculation

Table 5 - Reduction Amount Calculation

Table 6 - Cross-Subsidy Calculation

Table 1: Lockhart Shire Council Existing Sewerage Assets

Service Area	Asset type	Asset Description	Year of Commissioning	Current Replacement Cost 2017/18 \$	Assets excluding reticulation	Assets excluding pre 1989	Lockhart	The Rock	Yerong Creek	Assets Excluded
LOCKHART	Reticulation	49-55 Galore St	1970	\$ 11,877	\$ -	\$0	\$0	\$0	\$0	\$11,877
LOCKHART	Reticulation	55 Galore Street to Day St	1970	\$ 16,279	\$ -	\$0	\$0	\$0	\$0	\$16,279
LOCKHART	Reticulation	Day Street from Galore St to lane rear	1967	\$ 26,710	\$ -	\$0	\$0	\$0	\$0	\$26,710
LOCKHART	Reticulation	Lane, rear Ferrier St	2008	\$ 19,860	\$ -	\$0	\$0	\$0	\$0	\$19,860
LOCKHART	Reticulation	Lane, Rear Ferrier St	2008	\$ 18,793	\$ -	\$0	\$0	\$0	\$0	\$18,793
LOCKHART	Reticulation	Urana Street	1965	\$ 9,021	\$ -	\$0	\$0	\$0	\$0	\$9,021
LOCKHART	Reticulation	Lane, Rear Ferrier St	1970	\$ 19,123	\$ -	\$0	\$0	\$0	\$0	\$19,123
LOCKHART	Reticulation	Lane, Rear Ferrier St	1970	\$ 7,061	\$ -	\$0	\$0	\$0	\$0	\$7,061
LOCKHART	Reticulation	Urana St	1965	\$ 6,039	\$ -	\$0	\$0	\$0	\$0	\$6,039
LOCKHART	Reticulation	Urana St, eastern side near 81 Ferrier	1970	\$ 28,486	\$ -	\$0	\$0	\$0	\$0	\$28,486
LOCKHART	Reticulation	Lane rear Green St via private proper	1970	\$ 29,048	\$ -	\$0	\$0	\$0	\$0	\$29,048
LOCKHART	Reticulation	Brookong St	1965	\$ 20,460	\$ -	\$0	\$0	\$0	\$0	\$20,460
LOCKHART	Reticulation	Lane Drummond/Brookong St	1965	\$ 15,552	\$ -	\$0	\$0	\$0	\$0	\$15,552
LOCKHART	Reticulation	Lane Drummond/Brookong St	1965	\$ 14,565	\$ -	\$0	\$0	\$0	\$0	\$14,565
LOCKHART	Reticulation	Lane Drummond/Brookong St	1965	\$ 21,183	\$ -	\$0	\$0	\$0	\$0	\$21,183
LOCKHART	Reticulation	Hayes St	1965	\$ 28,626	\$ -	\$0	\$0	\$0	\$0	\$28,626
LOCKHART	Reticulation	Lane Drummond/Brookong St	1965	\$ 21,516	\$ -	\$0	\$0	\$0	\$0	\$21,516
LOCKHART	Reticulation	Lane Drummond/Brookong St	1965	\$ 20,440	\$ -	\$0	\$0	\$0	\$0	\$20,440
LOCKHART	Reticulation	Lane Hebdern/Drummond	1992	\$ 19,555	\$ -	\$0	\$0	\$0	\$0	\$19,555
LOCKHART	Reticulation	Lane Hebdern/Drummond	1967	\$ 17,786	\$ -	\$0	\$0	\$0	\$0	\$17,786
LOCKHART	Reticulation	Hayes St	1965	\$ 19,133	\$ -	\$0	\$0	\$0	\$0	\$19,133
LOCKHART	Reticulation	Lane Hebdern/Drummond St	1965	\$ 14,339	\$ -	\$0	\$0	\$0	\$0	\$14,339
LOCKHART	Reticulation	Lane Hebdern/Drummond St	1965	\$ 14,027	\$ -	\$0	\$0	\$0	\$0	\$14,027
LOCKHART	Reticulation	Lane Hebdern/Drummond St	1965	\$ 20,664	\$ -	\$0	\$0	\$0	\$0	\$20,664
LOCKHART	Reticulation	Hayes St	1965	\$ 35,275	\$ -	\$0	\$0	\$0	\$0	\$35,275
LOCKHART	Reticulation	Hayes St	1965	\$ 25,071	\$ -	\$0	\$0	\$0	\$0	\$25,071
LOCKHART	Reticulation	Lane (Green/Hebdern St) from Hayes	1992	\$ 12,348	\$ -	\$0	\$0	\$0	\$0	\$12,348
LOCKHART	Reticulation	Lane (Green/Hebdern St) from Hayes	1965	\$ 30,694	\$ -	\$0	\$0	\$0	\$0	\$30,694
LOCKHART	Reticulation	Hayes St - Lane (Ferrier) to Galore St	1965	\$ 19,994	\$ -	\$0	\$0	\$0	\$0	\$19,994
LOCKHART	Reticulation	Hayes St (Ferrier St to lane)	1965	\$ 19,652	\$ -	\$0	\$0	\$0	\$0	\$19,652
LOCKHART	Reticulation	Lane, Rear Ferrier St	1965	\$ 25,678	\$ -	\$0	\$0	\$0	\$0	\$25,678
LOCKHART	Reticulation	Lane, Rear Ferrier St	1965	\$ 10,178	\$ -	\$0	\$0	\$0	\$0	\$10,178
LOCKHART	Reticulation	Hayes St	1965	\$ 6,470	\$ -	\$0	\$0	\$0	\$0	\$6,470
LOCKHART	Reticulation	Hayes St (Green St Lane to Ferrier)	1965	\$ 28,104	\$ -	\$0	\$0	\$0	\$0	\$28,104
LOCKHART	Reticulation	Hayes St (Hebdern St Ln to Green St)	1965	\$ 34,764	\$ -	\$0	\$0	\$0	\$0	\$34,764
LOCKHART	Reticulation	Hayes St (Green St to lane)	1965	\$ 25,586	\$ -	\$0	\$0	\$0	\$0	\$25,586
LOCKHART	Reticulation	Lane, Green/Ferrier	1965	\$ 21,690	\$ -	\$0	\$0	\$0	\$0	\$21,690
LOCKHART	Reticulation	Lane, Green/Ferrier	1965	\$ 27,635	\$ -	\$0	\$0	\$0	\$0	\$27,635
LOCKHART	Reticulation	Lane, Hebdern/Green	1965	\$ 22,424	\$ -	\$0	\$0	\$0	\$0	\$22,424
LOCKHART	Reticulation	Lane, Green/Hebdern	1965	\$ 28,185	\$ -	\$0	\$0	\$0	\$0	\$28,185
LOCKHART	Reticulation	Lane, Ferrier/Green St	1965	\$ 16,028	\$ -	\$0	\$0	\$0	\$0	\$16,028
LOCKHART	Reticulation	Lane Ferrier/Green St	1965	\$ 19,679	\$ -	\$0	\$0	\$0	\$0	\$19,679
LOCKHART	Reticulation	Lane, Rear Ferrier St	1965	\$ 19,200	\$ -	\$0	\$0	\$0	\$0	\$19,200
LOCKHART	Reticulation	Lane, Rear Ferrier St	1965	\$ 27,541	\$ -	\$0	\$0	\$0	\$0	\$27,541
LOCKHART	Reticulation	31-49 Galore St	1970	\$ 50,186	\$ -	\$0	\$0	\$0	\$0	\$50,186
LOCKHART	Reticulation	21-27 Galore Street	1965	\$ 14,074	\$ -	\$0	\$0	\$0	\$0	\$14,074
LOCKHART	Reticulation	Lane, Rear Ferrier St	1965	\$ 13,979	\$ -	\$0	\$0	\$0	\$0	\$13,979
LOCKHART	Reticulation	Lane, Rear Ferrier St	1965	\$ 19,302	\$ -	\$0	\$0	\$0	\$0	\$19,302
LOCKHART	Reticulation	Lane, Green/Ferrier	1965	\$ 20,033	\$ -	\$0	\$0	\$0	\$0	\$20,033
LOCKHART	Reticulation	Lane, Green/Ferrier	1965	\$ 20,262	\$ -	\$0	\$0	\$0	\$0	\$20,262
LOCKHART	Reticulation	Lane, Green/Ferrier	1965	\$ 19,456	\$ -	\$0	\$0	\$0	\$0	\$19,456
LOCKHART	Reticulation	Lane, Green/Ferrier	1965	\$ 29,702	\$ -	\$0	\$0	\$0	\$0	\$29,702
LOCKHART	Reticulation	Lane, Green/Ferrier	1965	\$ 26,291	\$ -	\$0	\$0	\$0	\$0	\$26,291

Table 1: Lockhart Shire Council Existing Sewerage Assets

Service Area	Asset type	Asset Description	Year of Commissioning	Current Replacement Cost 2017/18 \$	Assets excluding reticulation	Assets excluding pre 1989	Lockhart	The Rock	Yerong Creek	Assets Excluded
LOCKHART	Reticulation	Matthews St	1965	\$ 8,529	\$ -	\$0	\$0	\$0	\$0	\$8,529
LOCKHART	Reticulation	Lane, Green/Ferrier	1965	\$ 23,330	\$ -	\$0	\$0	\$0	\$0	\$23,330
LOCKHART	Reticulation	Lane Ferrier/Green St	1965	\$ 28,940	\$ -	\$0	\$0	\$0	\$0	\$28,940
LOCKHART	Reticulation	Urana St	1965	\$ 17,169	\$ -	\$0	\$0	\$0	\$0	\$17,169
LOCKHART	Reticulation	Urana St crossing from Gunyah Hotel	1970	\$ 10,419	\$ -	\$0	\$0	\$0	\$0	\$10,419
LOCKHART	Reticulation	Urana Street, front of Gunyah Hotel	1970	\$ 3,007	\$ -	\$0	\$0	\$0	\$0	\$3,007
LOCKHART	Reticulation	Urana St, Private Property	1970	\$ 17,126	\$ -	\$0	\$0	\$0	\$0	\$17,126
LOCKHART	Reticulation	Private Property, Urana St	1965	\$ 19,091	\$ -	\$0	\$0	\$0	\$0	\$19,091
LOCKHART	Reticulation	Lane, Rear Urana St	1970	\$ 27,678	\$ -	\$0	\$0	\$0	\$0	\$27,678
LOCKHART	Reticulation	Lane, Rear Urana St	1970	\$ 25,030	\$ -	\$0	\$0	\$0	\$0	\$25,030
LOCKHART	Reticulation	Green St West	1970	\$ 18,580	\$ -	\$0	\$0	\$0	\$0	\$18,580
LOCKHART	Reticulation	Creek Reserve, Green St	1970	\$ 19,807	\$ -	\$0	\$0	\$0	\$0	\$19,807
LOCKHART	Reticulation	Lane Green/Hebden Streets	1965	\$ 19,108	\$ -	\$0	\$0	\$0	\$0	\$19,108
LOCKHART	Reticulation	Lane Green/Hebden Streets	1965	\$ 21,725	\$ -	\$0	\$0	\$0	\$0	\$21,725
LOCKHART	Reticulation	Lane, Green/Hebden	1965	\$ 18,379	\$ -	\$0	\$0	\$0	\$0	\$18,379
LOCKHART	Reticulation	Lane, Green/Hebden	1965	\$ 28,418	\$ -	\$0	\$0	\$0	\$0	\$28,418
LOCKHART	Reticulation	Lane, Green/Hebden	1965	\$ 25,561	\$ -	\$0	\$0	\$0	\$0	\$25,561
LOCKHART	Reticulation	Lane, Green/Hebden	1965	\$ 25,251	\$ -	\$0	\$0	\$0	\$0	\$25,251
LOCKHART	Reticulation	Lane, Green/Hebden	1965	\$ 11,526	\$ -	\$0	\$0	\$0	\$0	\$11,526
LOCKHART	Reticulation	Lane, Green/Hebden	1965	\$ 11,484	\$ -	\$0	\$0	\$0	\$0	\$11,484
LOCKHART	Reticulation	Lane, Green/Hebden	1965	\$ 23,633	\$ -	\$0	\$0	\$0	\$0	\$23,633
LOCKHART	Reticulation	Holiday St	1965	\$ 18,949	\$ -	\$0	\$0	\$0	\$0	\$18,949
LOCKHART	Reticulation	Holiday St	1965	\$ 21,960	\$ -	\$0	\$0	\$0	\$0	\$21,960
LOCKHART	Reticulation	Lane, Drummond/Brookong	1965	\$ 29,458	\$ -	\$0	\$0	\$0	\$0	\$29,458
LOCKHART	Reticulation	Walter Day Park	1965	\$ 29,519	\$ -	\$0	\$0	\$0	\$0	\$29,519
LOCKHART	Reticulation	Lane, Urana St	1970	\$ 21,802	\$ -	\$0	\$0	\$0	\$0	\$21,802
LOCKHART	Reticulation	Lane, Urana St	1970	\$ 10,200	\$ -	\$0	\$0	\$0	\$0	\$10,200
LOCKHART	Reticulation	Urana Street	1965	\$ 23,007	\$ -	\$0	\$0	\$0	\$0	\$23,007
LOCKHART	Reticulation	Urana Street	1965	\$ 27,419	\$ -	\$0	\$0	\$0	\$0	\$27,419
LOCKHART	Reticulation	Lockhart Pool (Ex-house)	1965	\$ 16,323	\$ -	\$0	\$0	\$0	\$0	\$16,323
LOCKHART	Reticulation	Urana Street	1965	\$ 15,512	\$ -	\$0	\$0	\$0	\$0	\$15,512
LOCKHART	Reticulation	Urana Street	1965	\$ 10,917	\$ -	\$0	\$0	\$0	\$0	\$10,917
LOCKHART	Reticulation	Urana Street	1965	\$ 25,957	\$ -	\$0	\$0	\$0	\$0	\$25,957
LOCKHART	Reticulation	Day St	1965	\$ 18,431	\$ -	\$0	\$0	\$0	\$0	\$18,431
LOCKHART	Reticulation	Lane, Drummond/Brookong	1965	\$ 19,587	\$ -	\$0	\$0	\$0	\$0	\$19,587
LOCKHART	Reticulation	Lane, Drummond/Brookong	1965	\$ 17,866	\$ -	\$0	\$0	\$0	\$0	\$17,866
LOCKHART	Reticulation	Lane Hebden/Drummond St	1965	\$ 12,404	\$ -	\$0	\$0	\$0	\$0	\$12,404
LOCKHART	Reticulation	Lane Hebden/Drummond St	1965	\$ 19,604	\$ -	\$0	\$0	\$0	\$0	\$19,604
LOCKHART	Reticulation	Matthews St	1965	\$ 14,200	\$ -	\$0	\$0	\$0	\$0	\$14,200
LOCKHART	Reticulation	Matthews/Drummond St	1965	\$ 19,838	\$ -	\$0	\$0	\$0	\$0	\$19,838
LOCKHART	Reticulation	Matthews St	1965	\$ 8,749	\$ -	\$0	\$0	\$0	\$0	\$8,749
LOCKHART	Reticulation	Lane, Drummond/Brookong	1965	\$ 14,066	\$ -	\$0	\$0	\$0	\$0	\$14,066
LOCKHART	Reticulation	Lane, Drummond/Brookong	1965	\$ 22,136	\$ -	\$0	\$0	\$0	\$0	\$22,136
LOCKHART	Reticulation	Lane, Drummond/Brookong	1965	\$ 22,495	\$ -	\$0	\$0	\$0	\$0	\$22,495
LOCKHART	Reticulation	Lane, Drummond/Brookong	1965	\$ 21,959	\$ -	\$0	\$0	\$0	\$0	\$21,959
LOCKHART	Reticulation	Green St West	1965	\$ 17,509	\$ -	\$0	\$0	\$0	\$0	\$17,509
LOCKHART	Reticulation	Green St	1970	\$ 20,863	\$ -	\$0	\$0	\$0	\$0	\$20,863
LOCKHART	Reticulation	Green St West	1965	\$ 19,919	\$ -	\$0	\$0	\$0	\$0	\$19,919
LOCKHART	Reticulation	Green St West	1965	\$ 27,955	\$ -	\$0	\$0	\$0	\$0	\$27,955
LOCKHART	Reticulation	Lane, Rear Green St	1965	\$ 24,176	\$ -	\$0	\$0	\$0	\$0	\$24,176
LOCKHART	Reticulation	Rear Lane Green St	1965	\$ 24,630	\$ -	\$0	\$0	\$0	\$0	\$24,630
LOCKHART	Reticulation	Lane Rear Green St West	1965	\$ 16,476	\$ -	\$0	\$0	\$0	\$0	\$16,476
LOCKHART	Reticulation	Lane, Rear Green Street West	1965	\$ 20,489	\$ -	\$0	\$0	\$0	\$0	\$20,489

Table 1: Lockhart Shire Council Existing Sewerage Assets

Service Area	Asset type	Asset Description	Year of Commissioning	Current Replacement Cost 2017/18 \$	Assets excluding reticulation	Assets excluding pre 1989	Lockhart	The Rock	Yerong Creek	Assets Excluded
LOCKHART	Reticulation	Rear Green St West	1965	\$ 17,712	\$ -	\$ 0	\$ 0	\$ 0	\$ 0	\$ 17,712
LOCKHART	Reticulation	Brookong Creek	1965	\$ 19,652	\$ -	\$ 0	\$ 0	\$ 0	\$ 0	\$ 19,652
THE ROCK	Reticulation	Lane, rear 34-36 Davidson St	1981	\$ 17,779	\$ -	\$ 0	\$ 0	\$ 0	\$ 0	\$ 17,779
THE ROCK	Reticulation	Lane, rear 30-32 Davidson St	1981	\$ 12,694	\$ -	\$ 0	\$ 0	\$ 0	\$ 0	\$ 12,694
THE ROCK	Reticulation	Lane rear Davidson, through 27 Norman	1981	\$ 28,653	\$ -	\$ 0	\$ 0	\$ 0	\$ 0	\$ 28,653
THE ROCK	Reticulation	18 Norman St	1981	\$ 6,024	\$ -	\$ 0	\$ 0	\$ 0	\$ 0	\$ 6,024
THE ROCK	Reticulation	12-18 Norman St	1981	\$ 25,516	\$ -	\$ 0	\$ 0	\$ 0	\$ 0	\$ 25,516
THE ROCK	Reticulation	8-12 Norman St	1981	\$ 23,144	\$ -	\$ 0	\$ 0	\$ 0	\$ 0	\$ 23,144
THE ROCK	Reticulation	2-8 Norman St	1981	\$ 24,020	\$ -	\$ 0	\$ 0	\$ 0	\$ 0	\$ 24,020
THE ROCK	Reticulation	1-2 Norman St (crosses road), Day St	1981	\$ 13,011	\$ -	\$ 0	\$ 0	\$ 0	\$ 0	\$ 13,011
THE ROCK	Reticulation	Lane, rear 24-30 Davidson St	1981	\$ 12,573	\$ -	\$ 0	\$ 0	\$ 0	\$ 0	\$ 12,573
THE ROCK	Reticulation	Lane, rear 18-22 Davidson St	1981	\$ 6,788	\$ -	\$ 0	\$ 0	\$ 0	\$ 0	\$ 6,788
THE ROCK	Reticulation	Lane, rear 10-16 Davidson St	1981	\$ 13,094	\$ -	\$ 0	\$ 0	\$ 0	\$ 0	\$ 13,094
THE ROCK	Reticulation	Lane, rear 2-10 Davidson St	1981	\$ 19,528	\$ -	\$ 0	\$ 0	\$ 0	\$ 0	\$ 19,528
THE ROCK	Reticulation	Day Street, beside 1 Norman St	1981	\$ 21,176	\$ -	\$ 0	\$ 0	\$ 0	\$ 0	\$ 21,176
THE ROCK	Reticulation	From lane rear 17 Davidson St, throu	1981	\$ 11,862	\$ -	\$ 0	\$ 0	\$ 0	\$ 0	\$ 11,862
THE ROCK	Reticulation	Lane (Mitchell St), rear 13-17 David	1981	\$ 15,329	\$ -	\$ 0	\$ 0	\$ 0	\$ 0	\$ 15,329
THE ROCK	Reticulation	Lane (Mitchell St), rear 7-13 Davidsof	1981	\$ 21,980	\$ -	\$ 0	\$ 0	\$ 0	\$ 0	\$ 21,980
THE ROCK	Reticulation	Lane (Mitchell St), rear 1-7 Davidso	1981	\$ 17,076	\$ -	\$ 0	\$ 0	\$ 0	\$ 0	\$ 17,076
THE ROCK	Reticulation	Day St from rear 130 to rear 132 Ura	1981	\$ 12,737	\$ -	\$ 0	\$ 0	\$ 0	\$ 0	\$ 12,737
THE ROCK	Reticulation	Lane rear 120-130 Urana St	1981	\$ 15,973	\$ -	\$ 0	\$ 0	\$ 0	\$ 0	\$ 15,973
THE ROCK	Reticulation	Lane, rear 2-12 Day St (near Emily G	1981	\$ 38,993	\$ -	\$ 0	\$ 0	\$ 0	\$ 0	\$ 38,993
THE ROCK	Reticulation	Rear 12 Day St, through Emily Gardel	1981	\$ 25,119	\$ -	\$ 0	\$ 0	\$ 0	\$ 0	\$ 25,119
THE ROCK	Reticulation	Rear 22-28 Day St (private property)	1981	\$ 14,550	\$ -	\$ 0	\$ 0	\$ 0	\$ 0	\$ 14,550
THE ROCK	Reticulation	Lane, rear 13 Burkes St across Emily	1981	\$ 29,712	\$ -	\$ 0	\$ 0	\$ 0	\$ 0	\$ 29,712
THE ROCK	Reticulation	Day Street (from 1 Norman St)	1981	\$ 13,072	\$ -	\$ 0	\$ 0	\$ 0	\$ 0	\$ 13,072
THE ROCK	Reticulation	Lane from Day St to Pump Sin	2010	\$ 19,633	\$ -	\$ 0	\$ 0	\$ 0	\$ 0	\$ 19,633
THE ROCK	Reticulation	Private property, 3 Burkes St	1981	\$ 12,688	\$ -	\$ 0	\$ 0	\$ 0	\$ 0	\$ 12,688
THE ROCK	Reticulation	St Mary's Churchyard, Urana/Ford St	1981	\$ 13,551	\$ -	\$ 0	\$ 0	\$ 0	\$ 0	\$ 13,551
THE ROCK	Reticulation	Lane, rear 5-9 Burkes St	1981	\$ 16,033	\$ -	\$ 0	\$ 0	\$ 0	\$ 0	\$ 16,033
THE ROCK	Reticulation	Lane, rear 9-13 Burkes St	1981	\$ 19,634	\$ -	\$ 0	\$ 0	\$ 0	\$ 0	\$ 19,634
THE ROCK	Reticulation	Emily St	1981	\$ 7,946	\$ -	\$ 0	\$ 0	\$ 0	\$ 0	\$ 7,946
THE ROCK	Reticulation	Lane, rear 121-125 Urana St	1981	\$ 14,928	\$ -	\$ 0	\$ 0	\$ 0	\$ 0	\$ 14,928
THE ROCK	Reticulation	Lane, rear 111-121 Urana St	1981	\$ 28,634	\$ -	\$ 0	\$ 0	\$ 0	\$ 0	\$ 28,634
THE ROCK	Reticulation	Rear 119-121 Urana St, Private Prop	1981	\$ 10,161	\$ -	\$ 0	\$ 0	\$ 0	\$ 0	\$ 10,161
THE ROCK	Reticulation	Lane, from John St to rear 109 Urana	1981	\$ 27,885	\$ -	\$ 0	\$ 0	\$ 0	\$ 0	\$ 27,885
THE ROCK	Reticulation	5-11 John Street	1981	\$ 13,077	\$ -	\$ 0	\$ 0	\$ 0	\$ 0	\$ 13,077
THE ROCK	Reticulation	11-15 John Street	1981	\$ 8,953	\$ -	\$ 0	\$ 0	\$ 0	\$ 0	\$ 8,953
THE ROCK	Reticulation	Lane, from John St to rear 107 Urana	1981	\$ 11,487	\$ -	\$ 0	\$ 0	\$ 0	\$ 0	\$ 11,487
THE ROCK	Reticulation	John St, eastern side	1981	\$ 11,787	\$ -	\$ 0	\$ 0	\$ 0	\$ 0	\$ 11,787
THE ROCK	Reticulation	Ford Street crossing from east to west	1981	\$ 11,083	\$ -	\$ 0	\$ 0	\$ 0	\$ 0	\$ 11,083
THE ROCK	Reticulation	Wilson St, The Rock Central School	1981	\$ 18,813	\$ -	\$ 0	\$ 0	\$ 0	\$ 0	\$ 18,813
THE ROCK	Reticulation	Wilson St, The Rock Central School	1980	\$ 14,265	\$ -	\$ 0	\$ 0	\$ 0	\$ 0	\$ 14,265
THE ROCK	Reticulation	Wilson St, crossing Queen St	1980	\$ 26,103	\$ -	\$ 0	\$ 0	\$ 0	\$ 0	\$ 26,103
THE ROCK	Reticulation	Wilson St	1980	\$ 26,406	\$ -	\$ 0	\$ 0	\$ 0	\$ 0	\$ 26,406
THE ROCK	Reticulation	Lane, rear 6-16 Queen St	1980	\$ 13,734	\$ -	\$ 0	\$ 0	\$ 0	\$ 0	\$ 13,734
THE ROCK	Reticulation	Lane, rear 2-6 Queen St	1980	\$ 19,676	\$ -	\$ 0	\$ 0	\$ 0	\$ 0	\$ 19,676
THE ROCK	Reticulation	The Rock Central School, Ford St	1981	\$ 4,200	\$ -	\$ 0	\$ 0	\$ 0	\$ 0	\$ 4,200
THE ROCK	Reticulation	The Rock Central School, Ford St	1981	\$ 7,445	\$ -	\$ 0	\$ 0	\$ 0	\$ 0	\$ 7,445
THE ROCK	Reticulation	The Rock Central School, Ford St	1981	\$ 19,071	\$ -	\$ 0	\$ 0	\$ 0	\$ 0	\$ 19,071
THE ROCK	Reticulation	Wilson St	1980	\$ 25,488	\$ -	\$ 0	\$ 0	\$ 0	\$ 0	\$ 25,488
THE ROCK	Reticulation	Rear 11-15 Mixner St (Private Proper	1980	\$ 14,530	\$ -	\$ 0	\$ 0	\$ 0	\$ 0	\$ 14,530
THE ROCK	Reticulation	Wilson Street	1980	\$ 9,674	\$ -	\$ 0	\$ 0	\$ 0	\$ 0	\$ 9,674

Table 1: Lockhart Shire Council Existing Sewerage Assets

Service Area	Asset type	Asset Description	Year of Commissioning	Current Replacement Cost 2017/18 \$	Assets excluding reticulation	Assets excluding pre 1989	Lockhart	The Rock	Yerong Creek	Assets Excluded
THE ROCK	Reticulation	Lane, rear 72-78 Urana Street	1980	\$ 14,791	\$ -	\$ 0	\$ 0	\$ 0	\$ 0	\$ 14,791
THE ROCK	Reticulation	Lane, rear 66-72 Urana St	1980	\$ 17,916	\$ -	\$ 0	\$ 0	\$ 0	\$ 0	\$ 17,916
THE ROCK	Reticulation	Lane, rear 64-66 Urana St	1980	\$ 15,176	\$ -	\$ 0	\$ 0	\$ 0	\$ 0	\$ 15,176
THE ROCK	Reticulation	Lane, rear 89-97 Urana Street	1981	\$ 15,530	\$ -	\$ 0	\$ 0	\$ 0	\$ 0	\$ 15,530
THE ROCK	Reticulation	Lane, rear 81-89 Urana Street	1981	\$ 19,748	\$ -	\$ 0	\$ 0	\$ 0	\$ 0	\$ 19,748
THE ROCK	Reticulation	Mixner St, eastern side near 78 King	1981	\$ 19,490	\$ -	\$ 0	\$ 0	\$ 0	\$ 0	\$ 19,490
THE ROCK	Reticulation	Mixner Street, eastern side near 81 K	1981	\$ 20,094	\$ -	\$ 0	\$ 0	\$ 0	\$ 0	\$ 20,094
THE ROCK	Reticulation	Lane, rear 89-99 King St	1981	\$ 27,536	\$ -	\$ 0	\$ 0	\$ 0	\$ 0	\$ 27,536
THE ROCK	Reticulation	Lane, 87-89 King St	1981	\$ 37,675	\$ -	\$ 0	\$ 0	\$ 0	\$ 0	\$ 37,675
THE ROCK	Reticulation	Lane, rear 81-87 King St	1981	\$ 32,789	\$ -	\$ 0	\$ 0	\$ 0	\$ 0	\$ 32,789
THE ROCK	Reticulation	Lane, 79-81 King St (crossing Mixner	1981	\$ 19,760	\$ -	\$ 0	\$ 0	\$ 0	\$ 0	\$ 19,760
THE ROCK	Reticulation	Lane, rear 75-79 King St	1981	\$ 23,561	\$ -	\$ 0	\$ 0	\$ 0	\$ 0	\$ 23,561
THE ROCK	Reticulation	Lane, rear 67-75 King St	1981	\$ 29,169	\$ -	\$ 0	\$ 0	\$ 0	\$ 0	\$ 29,169
THE ROCK	Reticulation	Lane, rear 61-69 King St	1981	\$ 27,458	\$ -	\$ 0	\$ 0	\$ 0	\$ 0	\$ 27,458
THE ROCK	Reticulation	Wilson Street, southern side, beside	1980	\$ 13,762	\$ -	\$ 0	\$ 0	\$ 0	\$ 0	\$ 13,762
THE ROCK	Reticulation	Bowling Club east of green, nth/sth	1980	\$ 7,085	\$ -	\$ 0	\$ 0	\$ 0	\$ 0	\$ 7,085
THE ROCK	Reticulation	Bowling Club east of green, nth/sth	1980	\$ 2,728	\$ -	\$ 0	\$ 0	\$ 0	\$ 0	\$ 2,728
THE ROCK	Reticulation	Rear of Anglican Church to Wilson St	1980	\$ 11,289	\$ -	\$ 0	\$ 0	\$ 0	\$ 0	\$ 11,289
THE ROCK	Reticulation	Wilson Street, crossing from south to	1980	\$ 9,452	\$ -	\$ 0	\$ 0	\$ 0	\$ 0	\$ 9,452
THE ROCK	Reticulation	Wilson St	1980	\$ 48,285	\$ -	\$ 0	\$ 0	\$ 0	\$ 0	\$ 48,285
THE ROCK	Reticulation	Lane, rear 34 Wilson/beside 26 Yerol	1981	\$ 20,014	\$ -	\$ 0	\$ 0	\$ 0	\$ 0	\$ 20,014
THE ROCK	Reticulation	24-26 Yerong St	1981	\$ 19,394	\$ -	\$ 0	\$ 0	\$ 0	\$ 0	\$ 19,394
THE ROCK	Reticulation	Wilson/Yerong St	1981	\$ 29,121	\$ -	\$ 0	\$ 0	\$ 0	\$ 0	\$ 29,121
THE ROCK	Reticulation	Wilson St	1981	\$ 39,600	\$ -	\$ 0	\$ 0	\$ 0	\$ 0	\$ 39,600
THE ROCK	Reticulation	Cornwall St, western side near 59 Wl	1980	\$ 42,466	\$ -	\$ 0	\$ 0	\$ 0	\$ 0	\$ 42,466
THE ROCK	Reticulation	Cornwall St, beside 64 Urana St	1980	\$ 32,934	\$ -	\$ 0	\$ 0	\$ 0	\$ 0	\$ 32,934
THE ROCK	Reticulation	Cornwall St, crossing from east to wel	1980	\$ 14,020	\$ -	\$ 0	\$ 0	\$ 0	\$ 0	\$ 14,020
THE ROCK	Reticulation	Cornwall St, beside 61 King St	1980	\$ 24,555	\$ -	\$ 0	\$ 0	\$ 0	\$ 0	\$ 24,555
THE ROCK	Reticulation	Cornwall St	1980	\$ 34,327	\$ -	\$ 0	\$ 0	\$ 0	\$ 0	\$ 34,327
THE ROCK	Reticulation	Cornwall St, beside 61 Urana St	1980	\$ 25,142	\$ -	\$ 0	\$ 0	\$ 0	\$ 0	\$ 25,142
THE ROCK	Reticulation	Cornwall St, crossing Urana St	1980	\$ 22,982	\$ -	\$ 0	\$ 0	\$ 0	\$ 0	\$ 22,982
THE ROCK	Reticulation	Lane, rear 79 Urana St, crossing Mixl	1981	\$ 16,368	\$ -	\$ 0	\$ 0	\$ 0	\$ 0	\$ 16,368
THE ROCK	Reticulation	Lane, rear 67-71 Urana St	1980	\$ 7,299	\$ -	\$ 0	\$ 0	\$ 0	\$ 0	\$ 7,299
THE ROCK	Reticulation	Lane, rear 61-67 Urana St	1980	\$ 17,367	\$ -	\$ 0	\$ 0	\$ 0	\$ 0	\$ 17,367
THE ROCK	Reticulation	Lane, rear 45-55 King St	1981	\$ 23,429	\$ -	\$ 0	\$ 0	\$ 0	\$ 0	\$ 23,429
THE ROCK	Reticulation	Lane, rear 55-61 King St (crossing Cd	1981	\$ 32,611	\$ -	\$ 0	\$ 0	\$ 0	\$ 0	\$ 32,611
THE ROCK	Reticulation	Lane, rear 45-53 Urana St	1980	\$ 23,582	\$ -	\$ 0	\$ 0	\$ 0	\$ 0	\$ 23,582
THE ROCK	Reticulation	Lane, rear 55-61 Urana St (crossing C	1980	\$ 31,330	\$ -	\$ 0	\$ 0	\$ 0	\$ 0	\$ 31,330
THE ROCK	Reticulation	Lane, rear 47-55 Wilson St	1981	\$ 20,336	\$ -	\$ 0	\$ 0	\$ 0	\$ 0	\$ 20,336
THE ROCK	Reticulation	Lane, rear 55-61 Wilson St	1981	\$ 28,713	\$ -	\$ 0	\$ 0	\$ 0	\$ 0	\$ 28,713
THE ROCK	Reticulation	Yerong St from rear 39 Wilson to 24	1981	\$ 19,684	\$ -	\$ 0	\$ 0	\$ 0	\$ 0	\$ 19,684
THE ROCK	Reticulation	Lane, rear 29-37 King St	1993	\$ 19,587	\$ -	\$ 0	\$ 0	\$ 0	\$ 0	\$ 19,587
THE ROCK	Reticulation	Lane, rear 21-31 King St (from Brett	1993	\$ 33,878	\$ -	\$ 0	\$ 0	\$ 0	\$ 0	\$ 33,878
THE ROCK	Reticulation	Lane, rear 11-19 King St (towards Br	1993	\$ 38,426	\$ -	\$ 0	\$ 0	\$ 0	\$ 0	\$ 38,426
THE ROCK	Reticulation	3 Nicholas St	1993	\$ 20,167	\$ -	\$ 0	\$ 0	\$ 0	\$ 0	\$ 20,167
THE ROCK	Reticulation	1 Nicholas St	1993	\$ 13,871	\$ -	\$ 0	\$ 0	\$ 0	\$ 0	\$ 13,871
THE ROCK	Reticulation	Bretton St, Nicholas St to laneway	1993	\$ 29,267	\$ -	\$ 0	\$ 0	\$ 0	\$ 0	\$ 29,267
THE ROCK	Reticulation	Bretton St, laneway to north side of K	1993	\$ 29,027	\$ -	\$ 0	\$ 0	\$ 0	\$ 0	\$ 29,027
THE ROCK	Reticulation	Bretton St, from King St to laneway	1993	\$ 18,447	\$ -	\$ 0	\$ 0	\$ 0	\$ 0	\$ 18,447
THE ROCK	Reticulation	Bretton Street, laneway to northern si	1993	\$ 39,348	\$ -	\$ 0	\$ 0	\$ 0	\$ 0	\$ 39,348
THE ROCK	Reticulation	Bretton St, Urana St, to laneway near	1993	\$ 16,078	\$ -	\$ 0	\$ 0	\$ 0	\$ 0	\$ 16,078
THE ROCK	Reticulation	Bretton St near 22 Urana St from eas	1993	\$ 6,587	\$ -	\$ 0	\$ 0	\$ 0	\$ 0	\$ 6,587
THE ROCK	Reticulation	Lane, rear 21-25 Wilson St	1993	\$ 28,411	\$ -	\$ 0	\$ 0	\$ 0	\$ 0	\$ 28,411

Table 1: Lockhart Shire Council Existing Sewerage Assets

Service Area	Asset type	Asset Description	Year of Commissioning	Current Replacement Cost 2017/18 \$	Assets excluding reticulation	Assets excluding pre 1989	Lockhart	The Rock	Yerong Creek	Assets Excluded
THE ROCK	Reticulation	Bretton St, beside 22 Urana St	1993	\$ 8,659	\$ -	\$ 0	\$ 0	\$ 0	\$ 0	\$8,659
THE ROCK	Reticulation	Lane, Wilson/Urana St - across Brett	1993	\$ 40,500	\$ -	\$ 0	\$ 0	\$ 0	\$ 0	\$40,500
THE ROCK	Reticulation	Lane, rear 13-19 Urana St	1993	\$ 36,126	\$ -	\$ 0	\$ 0	\$ 0	\$ 0	\$36,126
THE ROCK	Reticulation	Private Property, 1-11 Piper St, cross	1993	\$ 17,477	\$ -	\$ 0	\$ 0	\$ 0	\$ 0	\$17,477
THE ROCK	Reticulation	Lane, rear 9-11 Piper St	1993	\$ 28,077	\$ -	\$ 0	\$ 0	\$ 0	\$ 0	\$28,077
THE ROCK	Reticulation	Lane, rear 13-19 Piper St	1993	\$ 20,233	\$ -	\$ 0	\$ 0	\$ 0	\$ 0	\$20,233
THE ROCK	Reticulation	Bretton St, beside 22 Wilson St	1993	\$ 30,005	\$ -	\$ 0	\$ 0	\$ 0	\$ 0	\$30,005
THE ROCK	Reticulation	Bretton St, beside 21 Wilson St	1993	\$ 22,163	\$ -	\$ 0	\$ 0	\$ 0	\$ 0	\$22,163
THE ROCK	Reticulation	Bretton St, eastern side, nth side of P	1993	\$ 24,360	\$ -	\$ 0	\$ 0	\$ 0	\$ 0	\$24,360
THE ROCK	Reticulation	Lane, rear 21-33 Urana Street	1993	\$ 20,192	\$ -	\$ 0	\$ 0	\$ 0	\$ 0	\$20,192
THE ROCK	Reticulation	Lane rear 21-31 Urana St (from Brett	1993	\$ 20,539	\$ -	\$ 0	\$ 0	\$ 0	\$ 0	\$20,539
THE ROCK	Reticulation	Emily Street from Urana St Island to	1981	\$ 18,870	\$ -	\$ 0	\$ 0	\$ 0	\$ 0	\$18,870
LOCKHART	Reticulation	Lane Drummond/Brookong St	1965	\$ 3,162	\$ -	\$ 0	\$ 0	\$ 0	\$ 0	\$3,162
LOCKHART	Reticulation	Private Property	1965	\$ 4,001	\$ -	\$ 0	\$ 0	\$ 0	\$ 0	\$4,001
LOCKHART	Reticulation	Rear Rio Theatre (Pigdon's Ln)	1967	\$ 8,868	\$ -	\$ 0	\$ 0	\$ 0	\$ 0	\$8,868
LOCKHART	Reticulation	Matthews St	1965	\$ 8,769	\$ -	\$ 0	\$ 0	\$ 0	\$ 0	\$8,769
LOCKHART	Reticulation	Private Property, Matthews St	1965	\$ 3,203	\$ -	\$ 0	\$ 0	\$ 0	\$ 0	\$3,203
LOCKHART	Reticulation	Matthews St	1966	\$ 5,265	\$ -	\$ 0	\$ 0	\$ 0	\$ 0	\$5,265
LOCKHART	Reticulation	Matthews St	1966	\$ 7,167	\$ -	\$ 0	\$ 0	\$ 0	\$ 0	\$7,167
LOCKHART	Reticulation	Day Street	1965	\$ 12,095	\$ -	\$ 0	\$ 0	\$ 0	\$ 0	\$12,095
LOCKHART	Reticulation	Lane Green/Hebden Streets	1965	\$ 8,649	\$ -	\$ 0	\$ 0	\$ 0	\$ 0	\$8,649
LOCKHART	Reticulation	Lane Green/Hebden from O'Connell	1965	\$ 2,608	\$ -	\$ 0	\$ 0	\$ 0	\$ 0	\$2,608
LOCKHART	Reticulation	Urana Street	1967	\$ 9,322	\$ -	\$ 0	\$ 0	\$ 0	\$ 0	\$9,322
LOCKHART	Reticulation	Urana Street	1967	\$ 3,761	\$ -	\$ 0	\$ 0	\$ 0	\$ 0	\$3,761
LOCKHART	Reticulation	Rear Urana Street	1967	\$ 3,094	\$ -	\$ 0	\$ 0	\$ 0	\$ 0	\$3,094
LOCKHART	Reticulation	Holiday St	1967	\$ 7,078	\$ -	\$ 0	\$ 0	\$ 0	\$ 0	\$7,078
LOCKHART	Reticulation	Holiday St	1965	\$ 3,873	\$ -	\$ 0	\$ 0	\$ 0	\$ 0	\$3,873
LOCKHART	Reticulation	Lane, Green/Hebden	1965	\$ 6,108	\$ -	\$ 0	\$ 0	\$ 0	\$ 0	\$6,108
LOCKHART	Reticulation	Lane, Green/Hebden	1965	\$ 7,376	\$ -	\$ 0	\$ 0	\$ 0	\$ 0	\$7,376
LOCKHART	Reticulation	Matthews St	1965	\$ 5,860	\$ -	\$ 0	\$ 0	\$ 0	\$ 0	\$5,860
LOCKHART	Reticulation	Private Property - Matthews St	1965	\$ 5,411	\$ -	\$ 0	\$ 0	\$ 0	\$ 0	\$5,411
LOCKHART	Reticulation	Lane, Green/Ferrier	1967	\$ 2,132	\$ -	\$ 0	\$ 0	\$ 0	\$ 0	\$2,132
LOCKHART	Reticulation	Lane, Rear Ferrier St	1965	\$ 5,210	\$ -	\$ 0	\$ 0	\$ 0	\$ 0	\$5,210
LOCKHART	Reticulation	Lane Hebden/Drummond	1965	\$ 2,069	\$ -	\$ 0	\$ 0	\$ 0	\$ 0	\$2,069
LOCKHART	Reticulation	Lane Hebden/Drummond	1965	\$ 4,935	\$ -	\$ 0	\$ 0	\$ 0	\$ 0	\$4,935
LOCKHART	Reticulation	Private Property, Rear O'Connell St	1965	\$ 7,403	\$ -	\$ 0	\$ 0	\$ 0	\$ 0	\$7,403
LOCKHART	Reticulation	Lane Ferrier/Green St	1965	\$ 3,689	\$ -	\$ 0	\$ 0	\$ 0	\$ 0	\$3,689
LOCKHART	Reticulation	Lane, Rear Ferrier St	1965	\$ 4,300	\$ -	\$ 0	\$ 0	\$ 0	\$ 0	\$4,300
LOCKHART	Reticulation	Lane, Matthews St	1967	\$ 8,511	\$ -	\$ 0	\$ 0	\$ 0	\$ 0	\$8,511
LOCKHART	Reticulation	Matthews St	1965	\$ 7,110	\$ -	\$ 0	\$ 0	\$ 0	\$ 0	\$7,110
LOCKHART	Reticulation	10 Ferrier St, at rear	1967	\$ 8,216	\$ -	\$ 0	\$ 0	\$ 0	\$ 0	\$8,216
LOCKHART	Reticulation	Hayes St, Lockhart	1965	\$ 8,779	\$ -	\$ 0	\$ 0	\$ 0	\$ 0	\$8,779
LOCKHART	Reticulation	Hayes St, Lockhart	1965	\$ 8,345	\$ -	\$ 0	\$ 0	\$ 0	\$ 0	\$8,345
THE ROCK	Reticulation	Lane, rear 43-45 King St	1981	\$ 4,062	\$ -	\$ 0	\$ 0	\$ 0	\$ 0	\$4,062
LOCKHART	Reticulation	7-21 Galore St	1990	\$ 37,622	\$ -	\$ 0	\$ 0	\$ 0	\$ 0	\$37,622
THE ROCK	Trunk	From Bullenbung The Rock Rd inters	1982	\$ 51,705	\$ 51,705	\$ 0	\$ 0	\$ 0	\$ 0	\$51,705
THE ROCK	Trunk	Wilson St from Pump Stn 1 to Brett	1982	\$ 55,452	\$ 55,452	\$ 0	\$ 0	\$ 0	\$ 0	\$55,452
THE ROCK	Reticulation	Wilson St	1982	\$ 32,260	\$ -	\$ 0	\$ 0	\$ 0	\$ 0	\$32,260
THE ROCK	Trunk	From Brett St Pump Stn 3 to Buller	1982	\$ 50,215	\$ 50,215	\$ 0	\$ 0	\$ 0	\$ 0	\$50,215
THE ROCK	Reticulation	Wilson Street - Pump Station	1982	\$ 3,643	\$ -	\$ 0	\$ 0	\$ 0	\$ 0	\$3,643
THE ROCK	Reticulation	Lane from Day St - within pump stn e	1982	\$ 1,810	\$ -	\$ 0	\$ 0	\$ 0	\$ 0	\$1,810
THE ROCK	Trunk	Lane, from Day St to Pump Station 2	1982	\$ 5,560	\$ 5,560	\$ 0	\$ 0	\$ 0	\$ 0	\$5,560
THE ROCK	Trunk	Urana St from Day St to centre island	1982	\$ 5,177	\$ 5,177	\$ 0	\$ 0	\$ 0	\$ 0	\$5,177

Table 1: Lockhart Shire Council Existing Sewerage Assets

Service Area	Asset type	Asset Description	Year of Commissioning	Current Replacement Cost 2017/18 \$	Assets excluding reticulation	Assets excluding pre 1989	Lockhart	The Rock	Yerong Creek	Assets Excluded
THE ROCK	Reticulation	24-32 Norman St	1996	\$ 7,752	\$ -	\$0	\$0	\$0	\$0	\$7,752
THE ROCK	Reticulation	22-24 Norman St	1996	\$ 7,690	\$ -	\$0	\$0	\$0	\$0	\$7,690
THE ROCK	Reticulation	18-20 Norman Street	1996	\$ 8,216	\$ -	\$0	\$0	\$0	\$0	\$8,216
LOCKHART	Reticulation	201 Green St	1967	\$ 33,446	\$ -	\$0	\$0	\$0	\$0	\$33,446
LOCKHART	Reticulation	Lane Rear Green St	1965	\$ 27,210	\$ -	\$0	\$0	\$0	\$0	\$27,210
LOCKHART	Reticulation	Hayes Street (to Pump Station)	1967	\$ 1,839	\$ -	\$0	\$0	\$0	\$0	\$1,839
LOCKHART	Trunk	Hayes St. to Galore St.	1967	\$ 53,426	\$ 53,426	\$0	\$0	\$0	\$0	\$53,426
THE ROCK	Reticulation	Bretton St, from Manhole in laneway	1993	\$ 3,256	\$ -	\$0	\$0	\$0	\$0	\$3,256
LOCKHART	Trunk	Walter Day Park, Urana Street	1965	\$ 4,156	\$ 4,156	\$0	\$0	\$0	\$0	\$4,156
LOCKHART	Trunk	Walter Day Park, Urana Street	1965	\$ 4,884	\$ 4,884	\$0	\$0	\$0	\$0	\$4,884
LOCKHART	Trunk	Walter Day Park, Urana Street	1965	\$ 10,536	\$ 10,536	\$0	\$0	\$0	\$0	\$10,536
LOCKHART	Trunk	Walter Day Park, Urana Street	1965	\$ 10,618	\$ 10,618	\$0	\$0	\$0	\$0	\$10,618
LOCKHART	Trunk	Urana Street	1965	\$ 18,229	\$ 18,229	\$0	\$0	\$0	\$0	\$18,229
LOCKHART	Trunk	Brookong Creek	1965	\$ 5,610	\$ 5,610	\$0	\$0	\$0	\$0	\$5,610
LOCKHART	Reticulation	Holiday St	1965	\$ 37,726	\$ -	\$0	\$0	\$0	\$0	\$37,726
LOCKHART	Reticulation	Walter Day Park, Halliday St	1965	\$ 2,605	\$ -	\$0	\$0	\$0	\$0	\$2,605
LOCKHART	Reticulation	Holiday Street	1965	\$ 10,943	\$ -	\$0	\$0	\$0	\$0	\$10,943
LOCKHART	Reticulation	Hayes St	1965	\$ 12,294	\$ -	\$0	\$0	\$0	\$0	\$12,294
THE ROCK	Reticulation	Wilson St	1982	\$ 29,040	\$ -	\$0	\$0	\$0	\$0	\$29,040
THE ROCK	Reticulation	Rear of The Rock Post Office	1980	\$ 1,999	\$ -	\$0	\$0	\$0	\$0	\$1,999
THE ROCK	Reticulation	Lane, rear 41-45 Urana Street	1980	\$ 7,013	\$ -	\$0	\$0	\$0	\$0	\$7,013
THE ROCK	Reticulation	Lane, rear 97-99 Urana St	1981	\$ 4,230	\$ -	\$0	\$0	\$0	\$0	\$4,230
THE ROCK	Reticulation	Rear 10 Mixner St (Private Property)	1981	\$ 4,006	\$ -	\$0	\$0	\$0	\$0	\$4,006
THE ROCK	Reticulation	Lane, rear of 71 to 73 Urana St	1981	\$ 3,172	\$ -	\$0	\$0	\$0	\$0	\$3,172
THE ROCK	Reticulation	Lane, rear 101 Urana St across to eal	1981	\$ 7,244	\$ -	\$0	\$0	\$0	\$0	\$7,244
THE ROCK	Reticulation	Private Property, 1-3 Burkes St	1981	\$ 1,344	\$ -	\$0	\$0	\$0	\$0	\$1,344
THE ROCK	Reticulation	Lane, rear 127-129 Urana St (private	1981	\$ 10,981	\$ -	\$0	\$0	\$0	\$0	\$10,981
THE ROCK	Reticulation	Rear Private Property, Urana St	1981	\$ 16,529	\$ -	\$0	\$0	\$0	\$0	\$16,529
THE ROCK	Reticulation	Rear Private Property, 107-113 Urana	1981	\$ 10,714	\$ -	\$0	\$0	\$0	\$0	\$10,714
THE ROCK	Reticulation	Rear Private Property, 113-115 Urana	1981	\$ 3,486	\$ -	\$0	\$0	\$0	\$0	\$3,486
THE ROCK	Reticulation	Rear 119 Urana St, Private Property	1981	\$ 3,447	\$ -	\$0	\$0	\$0	\$0	\$3,447
THE ROCK	Reticulation	Rear 121 Urana St (Private Property)	1981	\$ 3,470	\$ -	\$0	\$0	\$0	\$0	\$3,470
THE ROCK	Reticulation	Lane, rear 42-46 Davidson St	1981	\$ 19,334	\$ -	\$0	\$0	\$0	\$0	\$19,334
THE ROCK	Reticulation	Lane, rear 36-42 Davidson St	1981	\$ 19,676	\$ -	\$0	\$0	\$0	\$0	\$19,676
THE ROCK	Reticulation	Rear 18 Queen St (Private Property)	1980	\$ 3,871	\$ -	\$0	\$0	\$0	\$0	\$3,871
THE ROCK	Reticulation	1-3 John St	1981	\$ 8,707	\$ -	\$0	\$0	\$0	\$0	\$8,707
THE ROCK	Reticulation	Rear Private Property, 28-38 Day St	1981	\$ 19,840	\$ -	\$0	\$0	\$0	\$0	\$19,840
THE ROCK	Reticulation	Rear Private Property, 40 Day St	1981	\$ 4,088	\$ -	\$0	\$0	\$0	\$0	\$4,088
THE ROCK	Reticulation	Private Property, 1-3 Burkes St	1981	\$ 1,313	\$ -	\$0	\$0	\$0	\$0	\$1,313
THE ROCK	Reticulation	Rear 25 Davidson St (private property)	1981	\$ 3,686	\$ -	\$0	\$0	\$0	\$0	\$3,686
THE ROCK	Reticulation	Rear 77 Wilson St (private property)	1980	\$ 3,150	\$ -	\$0	\$0	\$0	\$0	\$3,150
THE ROCK	Reticulation	Rear 78 Urana Street (private property)	1980	\$ 6,997	\$ -	\$0	\$0	\$0	\$0	\$6,997
THE ROCK	Reticulation	Lane, rear 75 Urana St	1981	\$ 1,475	\$ -	\$0	\$0	\$0	\$0	\$1,475
THE ROCK	Reticulation	Lane, beside 11-13 Mixner St	1980	\$ 4,295	\$ -	\$0	\$0	\$0	\$0	\$4,295
THE ROCK	Reticulation	Mixner St	1980	\$ 9,476	\$ -	\$0	\$0	\$0	\$0	\$9,476
THE ROCK	Reticulation	Rear Private Property, 2 Burkes St	1980	\$ 10,724	\$ -	\$0	\$0	\$0	\$0	\$10,724
THE ROCK	Reticulation	Lane, rear 32 Wilson St	1981	\$ 4,293	\$ -	\$0	\$0	\$0	\$0	\$4,293
THE ROCK	Reticulation	Rear 40 Urana St, in Yerong Street	1981	\$ 2,998	\$ -	\$0	\$0	\$0	\$0	\$2,998
THE ROCK	Reticulation	Lane, Wilson/Urana St	1993	\$ 15,364	\$ -	\$0	\$0	\$0	\$0	\$15,364
THE ROCK	Reticulation	Rear of 7 Nicholas St (Private Proper	1993	\$ 13,226	\$ -	\$0	\$0	\$0	\$0	\$13,226
THE ROCK	Reticulation	7 Nicholas St	1993	\$ 14,372	\$ -	\$0	\$0	\$0	\$0	\$14,372
THE ROCK	Reticulation	Lane, Wilson St	1993	\$ 10,691	\$ -	\$0	\$0	\$0	\$0	\$10,691
THE ROCK	Reticulation	Lane, Rear 5-11 King St	1993	\$ 13,672	\$ -	\$0	\$0	\$0	\$0	\$13,672

Table 1: Lockhart Shire Council Existing Sewerage Assets

Service Area	Asset type	Asset Description	Year of Commissioning	Current Replacement Cost 2017/18 \$	Assets excluding reticulation	Assets excluding pre 1989	Lockhart	The Rock	Yerong Creek	Assets Excluded
THE ROCK	Reticulation	Lane, rear 5-13 Urana St	1993	\$ 12,574	\$ -	\$ 0	\$ 0	\$ 0	\$ 0	\$12,574
THE ROCK	Reticulation	Lane, rear 37-39 King St	1993	\$ 3,348	\$ -	\$ 0	\$ 0	\$ 0	\$ 0	\$3,348
THE ROCK	Reticulation	Lane, rear 33-39 Urana St	1993	\$ 14,880	\$ -	\$ 0	\$ 0	\$ 0	\$ 0	\$14,880
THE ROCK	Reticulation	Lane, rear 27-39 Wilson St	1993	\$ 10,761	\$ -	\$ 0	\$ 0	\$ 0	\$ 0	\$10,761
THE ROCK	Reticulation	2-12 Piper St (front)	1993	\$ 10,458	\$ -	\$ 0	\$ 0	\$ 0	\$ 0	\$10,458
THE ROCK	Reticulation	Lane, rear 21 Piper St	1993	\$ 15,009	\$ -	\$ 0	\$ 0	\$ 0	\$ 0	\$15,009
THE ROCK	Reticulation	Lane, rear 5-7 Piper St	1993	\$ 10,456	\$ -	\$ 0	\$ 0	\$ 0	\$ 0	\$10,456
THE ROCK	Reticulation	18-20 Piper St (front)	1993	\$ 21,573	\$ -	\$ 0	\$ 0	\$ 0	\$ 0	\$21,573
THE ROCK	Reticulation	24-28 Piper St (front)	1993	\$ 28,359	\$ -	\$ 0	\$ 0	\$ 0	\$ 0	\$28,359
YERONG CREEK	Reticulation	Moonba St	2003	\$ 5,852	\$ -	\$ 0	\$ 0	\$ 0	\$ 0	\$5,852
YERONG CREEK	Reticulation	Moonba St	2003	\$ 130	\$ -	\$ 0	\$ 0	\$ 0	\$ 0	\$130
YERONG CREEK	Reticulation	Queen St from Moonba St	2003	\$ 3,680	\$ -	\$ 0	\$ 0	\$ 0	\$ 0	\$3,680
YERONG CREEK	Trunk	Moonba from Plunkett	2003	\$ 121	\$ 121	\$121	\$ 0	\$ 0	\$121	\$ 0
YERONG CREEK	Trunk	Moonba from Plunkett	2003	\$ 43,104	\$ 43,104	\$43,104	\$ 0	\$ 0	\$43,104	\$ 0
YERONG CREEK	Reticulation	Plunkett St	2003	\$ 6,863	\$ -	\$ 0	\$ 0	\$ 0	\$ 0	\$6,863
YERONG CREEK	Trunk	Moonba from Plunkett	2003	\$ 3,944	\$ 3,944	\$3,944	\$ 0	\$ 0	\$3,944	\$ 0
YERONG CREEK	Reticulation	Plunkett St	2003	\$ 16,220	\$ -	\$ 0	\$ 0	\$ 0	\$ 0	\$16,220
LOCKHART	Reticulation	6 Harry Davies Drive, under road to N	2008	\$ 1,688	\$ -	\$ 0	\$ 0	\$ 0	\$ 0	\$1,688
LOCKHART	Reticulation	6 and 8 Harry Davies Drive	2008	\$ 302	\$ -	\$ 0	\$ 0	\$ 0	\$ 0	\$302
LOCKHART	Reticulation	Harry Davies Drive, Lot 10	2008	\$ 134	\$ -	\$ 0	\$ 0	\$ 0	\$ 0	\$134
LOCKHART	Reticulation	1 Harry Davies Drive	2008	\$ 45	\$ -	\$ 0	\$ 0	\$ 0	\$ 0	\$45
LOCKHART	Reticulation	East Street from Industrial Park	2008	\$ 12,222	\$ -	\$ 0	\$ 0	\$ 0	\$ 0	\$12,222
LOCKHART	Reticulation	East St,north from Industrial park	2008	\$ 16,100	\$ -	\$ 0	\$ 0	\$ 0	\$ 0	\$16,100
LOCKHART	Trunk	Private Land	1965	\$ 16,745	\$ 16,745	\$ 0	\$ 0	\$ 0	\$ 0	\$16,745
LOCKHART	Trunk	Private Land	1965	\$ 6,930	\$ 6,930	\$ 0	\$ 0	\$ 0	\$ 0	\$6,930
LOCKHART	Trunk	Urana Lockhart Road	1965	\$ 4,101	\$ 4,101	\$ 0	\$ 0	\$ 0	\$ 0	\$4,101
LOCKHART	Trunk	Lockhart Urana Road	1965	\$ 7,161	\$ 7,161	\$ 0	\$ 0	\$ 0	\$ 0	\$7,161
LOCKHART	Trunk	Urana Lockhart Road	1965	\$ 16,691	\$ 16,691	\$ 0	\$ 0	\$ 0	\$ 0	\$16,691
THE ROCK	Trunk	Urana St,Island, opp. Day St	2011	\$ 230	\$ 230	\$230	\$ 0	\$ 0	\$ 0	\$ 0
THE ROCK	Trunk	Urana St,Island, opp. Day St	1982	\$ 257	\$ 257	\$ 0	\$ 0	\$ 0	\$ 0	\$257
THE ROCK	Trunk	Day/Norman St Interseccion	2011	\$ 928	\$ 928	\$928	\$ 0	\$ 0	\$ 0	\$ 0
THE ROCK	Trunk	Day St from Urana St to Norman St	1982	\$ 23,114	\$ 23,114	\$ 0	\$ 0	\$ 0	\$ 0	\$23,114
YERONG CREEK	Reticulation	Moonba St, crossing Queen	2003	\$ 6,150	\$ -	\$ 0	\$ 0	\$ 0	\$ 0	\$6,150
YERONG CREEK	Reticulation	Queen Street	2003	\$ 120	\$ -	\$ 0	\$ 0	\$ 0	\$ 0	\$120
YERONG CREEK	Reticulation	Lane rear Finlaysons Lane	2003	\$ 8,165	\$ -	\$ 0	\$ 0	\$ 0	\$ 0	\$8,165
YERONG CREEK	Reticulation	McArthur Street	2003	\$ 10,160	\$ -	\$ 0	\$ 0	\$ 0	\$ 0	\$10,160
YERONG CREEK	Reticulation	Maconochie St	2003	\$ 1,608	\$ -	\$ 0	\$ 0	\$ 0	\$ 0	\$1,608
YERONG CREEK	Reticulation	Maconochie St	2003	\$ 265	\$ -	\$ 0	\$ 0	\$ 0	\$ 0	\$265
YERONG CREEK	Reticulation	McArthur Street between Maconochie	2003	\$ 9,027	\$ -	\$ 0	\$ 0	\$ 0	\$ 0	\$9,027
YERONG CREEK	Reticulation	Cole Street	2003	\$ 2,680	\$ -	\$ 0	\$ 0	\$ 0	\$ 0	\$2,680
YERONG CREEK	Trunk	Rear of School	2003	\$ 13,830	\$ 13,830	\$13,830	\$ 0	\$ 0	\$13,830	\$ 0
YERONG CREEK	Reticulation	Hay Street from Rec Ground	2003	\$ 8,767	\$ -	\$ 0	\$ 0	\$ 0	\$ 0	\$8,767
YERONG CREEK	Trunk	Hay Street - under railway line	2003	\$ 15,639	\$ 15,639	\$15,639	\$ 0	\$ 0	\$15,639	\$ 0
YERONG CREEK	Trunk	Moonba from Plunkett	2003	\$ 85,219	\$ 85,219	\$85,219	\$ 0	\$ 0	\$85,219	\$ 0
YERONG CREEK	Trunk	Finlayson Lane, crossing Waratah	2003	\$ 236	\$ 236	\$236	\$ 0	\$ 0	\$236	\$ 0
YERONG CREEK	Reticulation	Hay Street	2003	\$ 9,628	\$ -	\$ 0	\$ 0	\$ 0	\$ 0	\$9,628
YERONG CREEK	Reticulation	Hay Street from Rec Ground	2003	\$ 25,545	\$ -	\$ 0	\$ 0	\$ 0	\$ 0	\$25,545
YERONG CREEK	Reticulation	Cole Street	2003	\$ 18,262	\$ -	\$ 0	\$ 0	\$ 0	\$ 0	\$18,262
YERONG CREEK	Reticulation	Cole Street	2003	\$ 9,427	\$ -	\$ 0	\$ 0	\$ 0	\$ 0	\$9,427
YERONG CREEK	Reticulation	Maconochie St	2003	\$ 12,589	\$ -	\$ 0	\$ 0	\$ 0	\$ 0	\$12,589
YERONG CREEK	Reticulation	Maconochie St	2003	\$ 12,197	\$ -	\$ 0	\$ 0	\$ 0	\$ 0	\$12,197
YERONG CREEK	Reticulation	Lewis St to Maconochie St	2003	\$ 2,996	\$ -	\$ 0	\$ 0	\$ 0	\$ 0	\$2,996
YERONG CREEK	Reticulation	Cole Street, southern side	2003	\$ 10,415	\$ -	\$ 0	\$ 0	\$ 0	\$ 0	\$10,415

Table 1: Lockhart Shire Council Existing Sewerage Assets

Service Area	Asset type	Asset Description	Year of Commissioning	Current Replacement Cost 2017/18 \$	Assets excluding reticulation	Assets excluding pre 1989	Lockhart	The Rock	Yerong Creek	Assets Excluded
YERONG CREEK	Reticulation	Cole St, southern side	2003	\$ 12,512	\$ -	\$ 0	\$ 0	\$ 0	\$ 0	\$12,512
YERONG CREEK	Reticulation	Cole St, southern side	2003	\$ 11,242	\$ -	\$ 0	\$ 0	\$ 0	\$ 0	\$11,242
YERONG CREEK	Reticulation	Plunkett Street	2003	\$ 17,619	\$ -	\$ 0	\$ 0	\$ 0	\$ 0	\$17,619
YERONG CREEK	Reticulation	Plunkett Street	2003	\$ 82	\$ -	\$ 0	\$ 0	\$ 0	\$ 0	\$82
YERONG CREEK	Reticulation	Queen St from Moonba St	2003	\$ 7,626	\$ -	\$ 0	\$ 0	\$ 0	\$ 0	\$7,626
YERONG CREEK	Reticulation	Queen Street	2003	\$ 8,830	\$ -	\$ 0	\$ 0	\$ 0	\$ 0	\$8,830
YERONG CREEK	Reticulation	Finlayson Lane, north of Plunkett St	2003	\$ 5,931	\$ -	\$ 0	\$ 0	\$ 0	\$ 0	\$5,931
YERONG CREEK	Trunk	Finlayson St, crossing Waratah St	2003	\$ 2,280	\$ 2,280	\$ 0	\$ 0	\$ 0	\$ 2,280	\$ 0
YERONG CREEK	Reticulation	Waratah St, southern side	2003	\$ 1,106	\$ -	\$ 0	\$ 0	\$ 0	\$ 0	\$1,106
YERONG CREEK	Trunk	Hay Street - under railway line	2003	\$ 6,382	\$ 6,382	\$ 0	\$ 0	\$ 0	\$ 0	\$ 0
YERONG CREEK	Reticulation	McArthur St, western side	2003	\$ 19,774	\$ -	\$ 0	\$ 0	\$ 0	\$ 0	\$19,774
YERONG CREEK	Reticulation	Mackie Street, northern side	2003	\$ 5,551	\$ -	\$ 0	\$ 0	\$ 0	\$ 0	\$5,551
YERONG CREEK	Reticulation	McArthur St	2003	\$ 21	\$ -	\$ 0	\$ 0	\$ 0	\$ 0	\$21
YERONG CREEK	Reticulation	Lane rear Finlayson St south, off Que	2003	\$ 229	\$ -	\$ 0	\$ 0	\$ 0	\$ 0	\$229
YERONG CREEK	Reticulation	Queen St from Moonba St	2003	\$ 5,399	\$ -	\$ 0	\$ 0	\$ 0	\$ 0	\$5,399
YERONG CREEK	Reticulation	Maconochie St	2003	\$ 2,361	\$ -	\$ 0	\$ 0	\$ 0	\$ 0	\$2,361
YERONG CREEK	Reticulation	7 Harry Davies Drive	2008	\$ 149	\$ -	\$ 0	\$ 0	\$ 0	\$ 0	\$149
LOCKHART	Reticulation	7 Harry Davies Drive	2008	\$ 17	\$ -	\$ 0	\$ 0	\$ 0	\$ 0	\$17
LOCKHART	Reticulation	3 Harry Davies Drive	2008	\$ 59	\$ -	\$ 0	\$ 0	\$ 0	\$ 0	\$59
LOCKHART	Reticulation	5 Harry Davies Drive	2008	\$ 1,180	\$ -	\$ 0	\$ 0	\$ 0	\$ 0	\$1,180
LOCKHART	Reticulation	5 Harry Davies Drive	2008	\$ 3,379	\$ -	\$ 0	\$ 0	\$ 0	\$ 0	\$3,379
LOCKHART	Reticulation	3 Harry Davies Drive	2008	\$ 4,464	\$ -	\$ 0	\$ 0	\$ 0	\$ 0	\$4,464
LOCKHART	Reticulation	2 Harry Davies Drive, crossing road t	2008	\$ 1,688	\$ -	\$ 0	\$ 0	\$ 0	\$ 0	\$1,688
LOCKHART	Reticulation	4 Harry Davies Drive	2008	\$ 51	\$ -	\$ 0	\$ 0	\$ 0	\$ 0	\$51
LOCKHART	Reticulation	Harry Davies Drive, Lot 9	2008	\$ 94	\$ -	\$ 0	\$ 0	\$ 0	\$ 0	\$94
LOCKHART	Reticulation	1 Harry Davies Drive	2008	\$ 3,132	\$ -	\$ 0	\$ 0	\$ 0	\$ 0	\$3,132
LOCKHART	Reticulation	Cnr Harry Davies Drive & East Street	2008	\$ 125	\$ -	\$ 0	\$ 0	\$ 0	\$ 0	\$125
LOCKHART	Reticulation	East Street north from Harry Davies	2008	\$ 11,159	\$ -	\$ 0	\$ 0	\$ 0	\$ 0	\$11,159
LOCKHART	Reticulation	7 Harry Davies Drive	2008	\$ 4,717	\$ -	\$ 0	\$ 0	\$ 0	\$ 0	\$4,717
LOCKHART	Reticulation	9 Harry Davies Drive	2008	\$ 2,083	\$ -	\$ 0	\$ 0	\$ 0	\$ 0	\$2,083
LOCKHART	Reticulation	Prichard Place	2011	\$ 1,986	\$ -	\$ 0	\$ 0	\$ 0	\$ 0	\$1,986
LOCKHART	Reticulation	Prichard Place	2011	\$ 20,532	\$ -	\$ 0	\$ 0	\$ 0	\$ 0	\$20,532
LOCKHART	Reticulation	Prichard Place	2011	\$ 7,192	\$ -	\$ 0	\$ 0	\$ 0	\$ 0	\$7,192
LOCKHART	Reticulation	Prichard Place	2011	\$ 18,548	\$ -	\$ 0	\$ 0	\$ 0	\$ 0	\$18,548
LOCKHART	Reticulation	Rockcliff Court	2011	\$ 13,429	\$ -	\$ 0	\$ 0	\$ 0	\$ 0	\$13,429
LOCKHART	Reticulation	Rockcliff Court	2011	\$ 13,585	\$ -	\$ 0	\$ 0	\$ 0	\$ 0	\$13,585
LOCKHART	Reticulation	Rockcliff Court	2011	\$ 11,059	\$ -	\$ 0	\$ 0	\$ 0	\$ 0	\$11,059
LOCKHART	Reticulation	Rockcliff Court	2011	\$ 9,744	\$ -	\$ 0	\$ 0	\$ 0	\$ 0	\$9,744
LOCKHART	Reticulation	Rockcliff Court	2011	\$ 27,530	\$ -	\$ 0	\$ 0	\$ 0	\$ 0	\$27,530
LOCKHART	Reticulation	Rockcliff Court	2011	\$ 27,224	\$ -	\$ 0	\$ 0	\$ 0	\$ 0	\$27,224
LOCKHART	Reticulation	Rockcliff Court	2011	\$ 12,834	\$ -	\$ 0	\$ 0	\$ 0	\$ 0	\$12,834
LOCKHART	Reticulation	Green Street	2011	\$ 18,253	\$ -	\$ 0	\$ 0	\$ 0	\$ 0	\$18,253
LOCKHART	Reticulation	206 Green Street	2011	\$ 19,297	\$ -	\$ 0	\$ 0	\$ 0	\$ 0	\$19,297
LOCKHART	Reticulation	Treatment Plant to Urana Street	2001	\$ 102,114	\$ -	\$ 0	\$ 0	\$ 0	\$ 0	\$102,114
LOCKHART	Reticulation	Brookong Street	2001	\$ 34,472	\$ -	\$ 0	\$ 0	\$ 0	\$ 0	\$34,472
LOCKHART	Reticulation	Brookong St, Halliday to Day St	2001	\$ 56,614	\$ -	\$ 0	\$ 0	\$ 0	\$ 0	\$56,614
LOCKHART	Reticulation	10 Harry Davis Drive to 9 Harry Davis	2014	\$ 1,666	\$ -	\$ 0	\$ 0	\$ 0	\$ 0	\$1,666
LOCKHART	Reticulation	12 & 14 Harry Davies Drive to 11 Har	2014	\$ 1,670	\$ -	\$ 0	\$ 0	\$ 0	\$ 0	\$1,670
LOCKHART	Reticulation	9 Harry Davies Drive	2014	\$ 1,185	\$ -	\$ 0	\$ 0	\$ 0	\$ 0	\$1,185
LOCKHART	Reticulation	11 Harry Davies Drive	2014	\$ 4,503	\$ -	\$ 0	\$ 0	\$ 0	\$ 0	\$4,503
LOCKHART	Reticulation	13 Harry Davies Drive	2014	\$ 316	\$ -	\$ 0	\$ 0	\$ 0	\$ 0	\$316
LOCKHART	Reticulation	14 Harry Davies Drive	2014	\$ 64	\$ -	\$ 0	\$ 0	\$ 0	\$ 0	\$64
LOCKHART	Reticulation	13 Harry Davies Drive	2014	\$ 4,029	\$ -	\$ 0	\$ 0	\$ 0	\$ 0	\$4,029

Table 1: Lockhart Shire Council Existing Sewerage Assets

Service Area	Asset type	Asset Description	Year of Commissioning	Current Replacement Cost 2017/18 \$	Assets excluding reticulation	Assets excluding pre 1989	Lockhart	The Rock	Yerong Creek	Assets Excluded
LOCKHART	Reticulation	15 Harry Davies Drive	2014	\$ 5,009	\$ -	\$ 0	\$ 0	\$ 0	\$ 0	\$5,009
LOCKHART	Reticulation	16 & 18 Harry Davies Drive across to	2014	\$ 1,638	\$ -	\$ 0	\$ 0	\$ 0	\$ 0	\$1,638
LOCKHART	Reticulation	17 Harry Davies Drive	2014	\$ 2,835	\$ -	\$ 0	\$ 0	\$ 0	\$ 0	\$2,835
LOCKHART	Reticulation	Harry Davies Drive	2014	\$ 252	\$ -	\$ 0	\$ 0	\$ 0	\$ 0	\$252
LOCKHART	Reticulation	Rear Drummond/Hebden Street	1992	\$ 14,339	\$ -	\$ 0	\$ 0	\$ 0	\$ 0	\$14,339
LOCKHART	Manhole Circular	Lane, Ferrier/Green St from Matthew	1965	\$ 3,221	\$ 3,221	\$ 0	\$ 0	\$ 0	\$ 0	\$3,221
LOCKHART	Manhole Circular	Mathews St between Ferrier and Gre	1965	\$ 3,221	\$ 3,221	\$ 0	\$ 0	\$ 0	\$ 0	\$3,221
LOCKHART	Manhole Circular	Cnr of Lane, Ferrier/Green St and Ma	1965	\$ 3,221	\$ 3,221	\$ 0	\$ 0	\$ 0	\$ 0	\$3,221
LOCKHART	Manhole Circular	Lane, Ferrier/Green St from Urana to	1965	\$ 3,221	\$ 3,221	\$ 0	\$ 0	\$ 0	\$ 0	\$3,221
LOCKHART	Manhole Circular	Intersection of Urana St and Lane, Fe	1965	\$ 3,221	\$ 3,221	\$ 0	\$ 0	\$ 0	\$ 0	\$3,221
LOCKHART	Manhole Circular	Intersection of Ferrier and Urana St	1965	\$ 3,221	\$ 3,221	\$ 0	\$ 0	\$ 0	\$ 0	\$3,221
LOCKHART	Manhole Circular	Lane, Galore/Ferrier St between Uran	1965	\$ 3,221	\$ 3,221	\$ 0	\$ 0	\$ 0	\$ 0	\$3,221
LOCKHART	Manhole Circular	Lane, Galore/Ferrier St from Day St t	1965	\$ 3,221	\$ 3,221	\$ 0	\$ 0	\$ 0	\$ 0	\$3,221
LOCKHART	Manhole Rectangular	Lane, Galore/Ferrier St from Day St t	1965	\$ 3,221	\$ 3,221	\$ 0	\$ 0	\$ 0	\$ 0	\$3,221
LOCKHART	Manhole Rectangular	Lane, Galore/Ferrier St from Hayes to	1965	\$ 3,221	\$ 3,221	\$ 0	\$ 0	\$ 0	\$ 0	\$3,221
LOCKHART	Manhole Circular	Hayes St between Galore & Ferrier	1965	\$ 3,221	\$ 3,221	\$ 0	\$ 0	\$ 0	\$ 0	\$3,221
LOCKHART	Manhole Circular	Cnr Lane, Galore/Ferrier St from Hay	1965	\$ 3,221	\$ 3,221	\$ 0	\$ 0	\$ 0	\$ 0	\$3,221
LOCKHART	Manhole Circular	Lane, Galore/Ferrier St	1965	\$ 3,221	\$ 3,221	\$ 0	\$ 0	\$ 0	\$ 0	\$3,221
LOCKHART	Manhole Circular	Lane, Galore/Ferrier	1970	\$ 3,221	\$ 3,221	\$ 0	\$ 0	\$ 0	\$ 0	\$3,221
LOCKHART	Manhole Circular	Lane, Ferrier/Green St from East to H	1970	\$ 3,221	\$ 3,221	\$ 0	\$ 0	\$ 0	\$ 0	\$3,221
LOCKHART	Manhole Circular	Intersection of Hayes and Lane, Ferri	1965	\$ 3,221	\$ 3,221	\$ 0	\$ 0	\$ 0	\$ 0	\$3,221
LOCKHART	Manhole Circular	Lane, Ferrier/Green from Hayes to O	1965	\$ 3,221	\$ 3,221	\$ 0	\$ 0	\$ 0	\$ 0	\$3,221
LOCKHART	Manhole Rectangular	Lane, Ferrier/Green St from Day to O	1965	\$ 3,221	\$ 3,221	\$ 0	\$ 0	\$ 0	\$ 0	\$3,221
LOCKHART	Manhole Circular	Lane, Ferrier/Green St from Day to O	1965	\$ 3,221	\$ 3,221	\$ 0	\$ 0	\$ 0	\$ 0	\$3,221
LOCKHART	Manhole Circular	Lane, Ferrier/Green St from Day to O	1965	\$ 3,221	\$ 3,221	\$ 0	\$ 0	\$ 0	\$ 0	\$3,221
LOCKHART	Manhole Circular	Lane, Ferrier/Green St from Day to O	1965	\$ 3,221	\$ 3,221	\$ 0	\$ 0	\$ 0	\$ 0	\$3,221
LOCKHART	Manhole Circular	Lane, Ferrier/Green Sts from Matthe	1965	\$ 3,221	\$ 3,221	\$ 0	\$ 0	\$ 0	\$ 0	\$3,221
LOCKHART	Manhole Rectangular	Mid 55 Galore St	1965	\$ 3,221	\$ 3,221	\$ 0	\$ 0	\$ 0	\$ 0	\$3,221
LOCKHART	Manhole Rectangular	Front 49 Galore St	1965	\$ 3,221	\$ 3,221	\$ 0	\$ 0	\$ 0	\$ 0	\$3,221
LOCKHART	Manhole Circular	Front 29 Galore St	1965	\$ 3,221	\$ 3,221	\$ 0	\$ 0	\$ 0	\$ 0	\$3,221
LOCKHART	Manhole Circular	LKT	1967	\$ 3,221	\$ 3,221	\$ 0	\$ 0	\$ 0	\$ 0	\$3,221
LOCKHART	Manhole Circular	21 Galore St	1965	\$ 3,221	\$ 3,221	\$ 0	\$ 0	\$ 0	\$ 0	\$3,221
LOCKHART	Manhole Circular	7 Galore Street, LKT	1970	\$ 3,221	\$ 3,221	\$ 0	\$ 0	\$ 0	\$ 0	\$3,221
LOCKHART	Manhole Circular	Lane Green/Hebden Streets	1996	\$ 3,221	\$ 3,221	\$ 3,221	\$ 3,221	\$ 0	\$ 0	\$0
LOCKHART	Manhole Circular	Lane, Green/Hebden St from O'Conn	1965	\$ 3,221	\$ 3,221	\$ 0	\$ 0	\$ 0	\$ 0	\$3,221
LOCKHART	Manhole Circular	Lane, Green/Hebden St from Day to	1965	\$ 3,221	\$ 3,221	\$ 0	\$ 0	\$ 0	\$ 0	\$3,221
LOCKHART	Manhole Circular	Lane, Green/Hebden St from Matthe	1965	\$ 3,221	\$ 3,221	\$ 0	\$ 0	\$ 0	\$ 0	\$3,221
LOCKHART	Manhole Circular	Lane, Green/Hebden St from Matthe	1965	\$ 3,221	\$ 3,221	\$ 0	\$ 0	\$ 0	\$ 0	\$3,221
LOCKHART	Manhole Circular	Mathews St	1965	\$ 3,221	\$ 3,221	\$ 0	\$ 0	\$ 0	\$ 0	\$3,221
LOCKHART	Manhole Circular	Lane, Green/Hebden St from Halliday	1965	\$ 3,221	\$ 3,221	\$ 0	\$ 0	\$ 0	\$ 0	\$3,221
LOCKHART	Manhole Circular	Lane, Drummond/Brookong from Hall	1965	\$ 3,221	\$ 3,221	\$ 0	\$ 0	\$ 0	\$ 0	\$3,221
LOCKHART	Manhole Circular	Lane, Drummond/Brookong St from N	1965	\$ 3,221	\$ 3,221	\$ 0	\$ 0	\$ 0	\$ 0	\$3,221
LOCKHART	Manhole Circular	Day St, Recreation Ground Boundary	1965	\$ 3,221	\$ 3,221	\$ 0	\$ 0	\$ 0	\$ 0	\$3,221
LOCKHART	Manhole Circular	Hayes St, cnr lane Drummond/Brook	1965	\$ 3,221	\$ 3,221	\$ 0	\$ 0	\$ 0	\$ 0	\$3,221
LOCKHART	Manhole Circular	Lane, Drummond/Brookong St from B	1965	\$ 3,221	\$ 3,221	\$ 0	\$ 0	\$ 0	\$ 0	\$3,221
LOCKHART	Manhole Rectangular	Lane, Drummond/Brookong St from B	1965	\$ 3,221	\$ 3,221	\$ 0	\$ 0	\$ 0	\$ 0	\$3,221
LOCKHART	Manhole Circular	2 Brookong St	1966	\$ 3,221	\$ 3,221	\$ 0	\$ 0	\$ 0	\$ 0	\$3,221
LOCKHART	Manhole Circular	Lane, Hebden/Drummond St from Hal	1966	\$ 3,221	\$ 3,221	\$ 0	\$ 0	\$ 0	\$ 0	\$3,221
LOCKHART	Manhole Circular	Lane, Hebden/Drummond St from Hal	1965	\$ 3,221	\$ 3,221	\$ 0	\$ 0	\$ 0	\$ 0	\$3,221
LOCKHART	Manhole Circular	Lane Hebden/Drummond St from Eas	1992	\$ 3,221	\$ 3,221	\$ 3,221	\$ 3,221	\$ 0	\$ 0	\$0
LOCKHART	Manhole Circular	Lane, Hebden/Drummond St from Ma	1965	\$ 3,221	\$ 3,221	\$ 0	\$ 0	\$ 0	\$ 0	\$3,221
LOCKHART	Manhole Circular	Cnr Mathews St and Lane, Hebden/	1965	\$ 3,221	\$ 3,221	\$ 0	\$ 0	\$ 0	\$ 0	\$3,221
LOCKHART	Manhole Circular	Front 55-59 Urana St	1965	\$ 3,221	\$ 3,221	\$ 0	\$ 0	\$ 0	\$ 0	\$3,221
LOCKHART	Manhole Circular	Beside 160 Green St	1965	\$ 3,221	\$ 3,221	\$ 0	\$ 0	\$ 0	\$ 0	\$3,221

Table 1: Lockhart Shire Council Existing Sewerage Assets

Service Area	Asset type	Asset Description	Year of Commissioning	Current Replacement Cost 2017/18 \$	Assets excluding reticulation	Assets excluding pre 1989	Lockhart	The Rock	Yerong Creek	Assets Excluded
LOCKHART	Manhole Circular	1 Urana St	1965	\$ 3,221	\$ 3,221	\$ 0	\$ 0	\$ 0	\$ 0	\$ 3,221
LOCKHART	Manhole Circular	Green Street	1966	\$ 3,221	\$ 3,221	\$ 0	\$ 0	\$ 0	\$ 0	\$ 3,221
LOCKHART	Manhole Rectangular	Green St, near Veneris St	1966	\$ 3,221	\$ 3,221	\$ 0	\$ 0	\$ 0	\$ 0	\$ 3,221
LOCKHART	Manhole Rectangular	Veneris St, beside 174 Green St	1965	\$ 3,221	\$ 3,221	\$ 0	\$ 0	\$ 0	\$ 0	\$ 3,221
LOCKHART	Manhole Circular	Rear 196 Green St	1965	\$ 3,221	\$ 3,221	\$ 0	\$ 0	\$ 0	\$ 0	\$ 3,221
LOCKHART	Manhole Circular	178 Green St	1965	\$ 3,221	\$ 3,221	\$ 0	\$ 0	\$ 0	\$ 0	\$ 3,221
LOCKHART	Manhole Circular	Rear, 166 Green St	1965	\$ 3,221	\$ 3,221	\$ 0	\$ 0	\$ 0	\$ 0	\$ 3,221
LOCKHART	Manhole Circular	Lane beside 162 Green St	1965	\$ 3,221	\$ 3,221	\$ 0	\$ 0	\$ 0	\$ 0	\$ 3,221
LOCKHART	Manhole Circular	Beside Lockhart Swimming Pool - site	1965	\$ 3,221	\$ 3,221	\$ 0	\$ 0	\$ 0	\$ 0	\$ 3,221
LOCKHART	Manhole Circular	5 Urana St	1965	\$ 3,221	\$ 3,221	\$ 0	\$ 0	\$ 0	\$ 0	\$ 3,221
LOCKHART	Manhole Circular	Lane, Ferrier/Green St from Hayes to	1965	\$ 3,221	\$ 3,221	\$ 0	\$ 0	\$ 0	\$ 0	\$ 3,221
LOCKHART	Manhole Circular	Hayes St, cnr Green St	1965	\$ 3,221	\$ 3,221	\$ 0	\$ 0	\$ 0	\$ 0	\$ 3,221
LOCKHART	Manhole Circular	Hayes St, cnr Hebden	1965	\$ 3,221	\$ 3,221	\$ 0	\$ 0	\$ 0	\$ 0	\$ 3,221
LOCKHART	Manhole Circular	Hayes St between Hebden & Drummond	1965	\$ 3,221	\$ 3,221	\$ 0	\$ 0	\$ 0	\$ 0	\$ 3,221
LOCKHART	Manhole Circular	Hayes St, cnr Drummond	1965	\$ 3,221	\$ 3,221	\$ 0	\$ 0	\$ 0	\$ 0	\$ 3,221
LOCKHART	Manhole Circular	Lane Hebden/Drummond St	1966	\$ 3,221	\$ 3,221	\$ 0	\$ 0	\$ 0	\$ 0	\$ 3,221
LOCKHART	Manhole Circular	Lane, Galore/Ferrier from Urana to D	1965	\$ 3,221	\$ 3,221	\$ 0	\$ 0	\$ 0	\$ 0	\$ 3,221
LOCKHART	Manhole Circular	Hayes St, cnr Ferrier	1965	\$ 3,221	\$ 3,221	\$ 0	\$ 0	\$ 0	\$ 0	\$ 3,221
LOCKHART	Manhole Circular	Lane, Ferrier/Green St from East to H	1965	\$ 3,221	\$ 3,221	\$ 0	\$ 0	\$ 0	\$ 0	\$ 3,221
LOCKHART	Manhole Circular	Lane, Drummond/Brookong St from H	1965	\$ 3,221	\$ 3,221	\$ 0	\$ 0	\$ 0	\$ 0	\$ 3,221
LOCKHART	Manhole Circular	Mathews/Drummond St Intersection	1965	\$ 3,221	\$ 3,221	\$ 0	\$ 0	\$ 0	\$ 0	\$ 3,221
LOCKHART	Manhole Circular	Lane, Drummond/Brookong St from H	1965	\$ 3,221	\$ 3,221	\$ 0	\$ 0	\$ 0	\$ 0	\$ 3,221
LOCKHART	Manhole Circular	Lane, Galore/Ferrier St from Hayes to	1965	\$ 3,221	\$ 3,221	\$ 0	\$ 0	\$ 0	\$ 0	\$ 3,221
LOCKHART	Manhole Circular	Lane, Green/Hebden St from Hayes to	1965	\$ 3,221	\$ 3,221	\$ 0	\$ 0	\$ 0	\$ 0	\$ 3,221
LOCKHART	Manhole Circular	Lane, Drummond/Brookong St from H	1965	\$ 3,221	\$ 3,221	\$ 0	\$ 0	\$ 0	\$ 0	\$ 3,221
THE ROCK	Manhole Circular	Intersection - Yerong St/Lane	1981	\$ 3,221	\$ 3,221	\$ 0	\$ 0	\$ 0	\$ 0	\$ 3,221
THE ROCK	Manhole Circular	Bretton St	1993	\$ 3,221	\$ 3,221	\$ 3,221	\$ 0	\$ 3,221	\$ 0	\$ 0
THE ROCK	Manhole Circular	Lane, Rear King St	1993	\$ 3,221	\$ 3,221	\$ 3,221	\$ 0	\$ 3,221	\$ 0	\$ 0
THE ROCK	Manhole Circular	Bretton St	1993	\$ 3,221	\$ 3,221	\$ 3,221	\$ 0	\$ 3,221	\$ 0	\$ 0
THE ROCK	Manhole Circular	Lane, Urana/King St	1993	\$ 3,221	\$ 3,221	\$ 3,221	\$ 0	\$ 3,221	\$ 0	\$ 0
THE ROCK	Manhole Circular	Wilson St	1981	\$ 3,221	\$ 3,221	\$ 0	\$ 0	\$ 0	\$ 0	\$ 3,221
THE ROCK	Manhole Circular	Lane, Wilson/Urana St	1981	\$ 3,221	\$ 3,221	\$ 0	\$ 0	\$ 0	\$ 0	\$ 3,221
THE ROCK	Manhole Circular	Lane, Wilson/Urana St	1981	\$ 3,221	\$ 3,221	\$ 0	\$ 0	\$ 0	\$ 0	\$ 3,221
THE ROCK	Manhole Circular	Cornwall St	1981	\$ 3,221	\$ 3,221	\$ 0	\$ 0	\$ 0	\$ 0	\$ 3,221
THE ROCK	Manhole Circular	Lane, Wilson/Urana St	1981	\$ 3,221	\$ 3,221	\$ 0	\$ 0	\$ 0	\$ 0	\$ 3,221
THE ROCK	Manhole Circular	Wilson St	1981	\$ 3,221	\$ 3,221	\$ 0	\$ 0	\$ 0	\$ 0	\$ 3,221
THE ROCK	Manhole Circular	Lane, Wilson/Urana St	1981	\$ 3,221	\$ 3,221	\$ 0	\$ 0	\$ 0	\$ 0	\$ 3,221
THE ROCK	Manhole Circular	Wilson St	1981	\$ 3,221	\$ 3,221	\$ 0	\$ 0	\$ 0	\$ 0	\$ 3,221
THE ROCK	Manhole Circular	Lane, Wilson/Urana St	1981	\$ 3,221	\$ 3,221	\$ 0	\$ 0	\$ 0	\$ 0	\$ 3,221
THE ROCK	Manhole Circular	Lane, Urana/King St	1981	\$ 3,221	\$ 3,221	\$ 0	\$ 0	\$ 0	\$ 0	\$ 3,221
THE ROCK	Manhole Circular	Lane, King/Nicholas	1981	\$ 3,221	\$ 3,221	\$ 0	\$ 0	\$ 0	\$ 0	\$ 3,221
THE ROCK	Manhole Circular	Cornwall St	1981	\$ 3,221	\$ 3,221	\$ 0	\$ 0	\$ 0	\$ 0	\$ 3,221
THE ROCK	Manhole Circular	Lane, King/Nicholas St	1981	\$ 3,221	\$ 3,221	\$ 0	\$ 0	\$ 0	\$ 0	\$ 3,221
THE ROCK	Manhole Circular	Lane, King/Nicholas St	1981	\$ 3,221	\$ 3,221	\$ 0	\$ 0	\$ 0	\$ 0	\$ 3,221
THE ROCK	Manhole Circular	Lane, King/Nicholas St	1981	\$ 3,221	\$ 3,221	\$ 0	\$ 0	\$ 0	\$ 0	\$ 3,221
THE ROCK	Manhole Circular	Intersection of Lane and Mixner St	1981	\$ 3,221	\$ 3,221	\$ 0	\$ 0	\$ 0	\$ 0	\$ 3,221
THE ROCK	Manhole Circular	Lane, King/Nicholas St	1981	\$ 3,221	\$ 3,221	\$ 0	\$ 0	\$ 0	\$ 0	\$ 3,221
THE ROCK	Manhole Circular	Emily St	1981	\$ 3,221	\$ 3,221	\$ 0	\$ 0	\$ 0	\$ 0	\$ 3,221
THE ROCK	Manhole Circular	Lane, Urana/King St	1981	\$ 3,221	\$ 3,221	\$ 0	\$ 0	\$ 0	\$ 0	\$ 3,221
THE ROCK	Manhole Circular	Lane, Urana/King St	1981	\$ 3,221	\$ 3,221	\$ 0	\$ 0	\$ 0	\$ 0	\$ 3,221
THE ROCK	Manhole Circular	Lane, Urana/King St from Cornwall to	1981	\$ 3,221	\$ 3,221	\$ 0	\$ 0	\$ 0	\$ 0	\$ 3,221

Table 1: Lockhart Shire Council Existing Sewerage Assets

Service Area	Asset type	Asset Description	Year of Commissioning	Current Replacement Cost 2017/18 \$	Assets excluding reticulation	Assets excluding pre 1989	Lockhart	The Rock	Yerong Creek	Assets Excluded
THE ROCK	Manhole Circular	Lane, Burkes/Urana St from Ford to	1981	\$ 3,221	\$ 3,221	\$0	\$0	\$0	\$0	\$3,221
THE ROCK	Manhole Circular	Wilson St	1981	\$ 3,221	\$ 3,221	\$0	\$0	\$0	\$0	\$3,221
THE ROCK	Manhole Circular	Wilson/Ford St Intersection	1981	\$ 3,221	\$ 3,221	\$0	\$0	\$0	\$0	\$3,221
THE ROCK	Manhole Circular	Wilson St (Private Property?)	1980	\$ 3,221	\$ 3,221	\$0	\$0	\$0	\$0	\$3,221
THE ROCK	Manhole Circular	Wilson St	1981	\$ 3,221	\$ 3,221	\$0	\$0	\$0	\$0	\$3,221
THE ROCK	Manhole Circular	Lane, Burkes/Urana St between Ford	1981	\$ 3,221	\$ 3,221	\$0	\$0	\$0	\$0	\$3,221
THE ROCK	Manhole Circular	Lane, Burkes/Urana St between Ford	1981	\$ 3,221	\$ 3,221	\$0	\$0	\$0	\$0	\$3,221
THE ROCK	Manhole Circular	Lane, Burkes/Urana St from Emily to	1981	\$ 3,221	\$ 3,221	\$0	\$0	\$0	\$0	\$3,221
THE ROCK	Manhole Circular	Lane, Burkes/Urana St from Emily to	1981	\$ 3,221	\$ 3,221	\$0	\$0	\$0	\$0	\$3,221
THE ROCK	Manhole Circular	Lane, Davidson/Urana St (Mitchell St	1981	\$ 3,221	\$ 3,221	\$0	\$0	\$0	\$0	\$3,221
THE ROCK	Manhole Circular	Lane, Davidson/Urana St from Day to	1981	\$ 3,221	\$ 3,221	\$0	\$0	\$0	\$0	\$3,221
THE ROCK	Manhole Circular	Intersection Lane, Norman/Davidson	1981	\$ 3,221	\$ 3,221	\$0	\$0	\$0	\$0	\$3,221
THE ROCK	Manhole Circular	Lane, Norman/Davidson St from Day	1981	\$ 3,221	\$ 3,221	\$0	\$0	\$0	\$0	\$3,221
THE ROCK	Manhole Circular	Lane Norman/Davidson St from Day	1981	\$ 3,221	\$ 3,221	\$0	\$0	\$0	\$0	\$3,221
THE ROCK	Manhole Circular	Intersection of Lane & Day St (Pump	1981	\$ 3,221	\$ 3,221	\$0	\$0	\$0	\$0	\$3,221
THE ROCK	Manhole Circular	Front 2-4 Norman St	1981	\$ 3,221	\$ 3,221	\$0	\$0	\$0	\$0	\$3,221
THE ROCK	Manhole Circular	Front 8 Norman St	1981	\$ 3,221	\$ 3,221	\$0	\$0	\$0	\$0	\$3,221
THE ROCK	Manhole Circular	Front 14 Norman St	1981	\$ 3,221	\$ 3,221	\$0	\$0	\$0	\$0	\$3,221
THE ROCK	Manhole Circular	Front 18 Norman St (Cnr)	1981	\$ 3,221	\$ 3,221	\$0	\$0	\$0	\$0	\$3,221
THE ROCK	Manhole Circular	TR	1970	\$ 3,221	\$ 3,221	\$0	\$0	\$0	\$0	\$3,221
THE ROCK	Manhole Circular	TR	1996	\$ 3,221	\$ 3,221	\$3,221	\$0	\$3,221	\$0	\$0
THE ROCK	Manhole Circular	TR	1996	\$ 3,221	\$ 3,221	\$3,221	\$0	\$3,221	\$0	\$0
THE ROCK	Manhole Circular	TR	1996	\$ 3,221	\$ 3,221	\$3,221	\$0	\$3,221	\$0	\$0
LOCKHART	Manhole Circular	Urana St, intersection of Galore/Ferril	1965	\$ 3,221	\$ 3,221	\$0	\$0	\$0	\$0	\$3,221
LOCKHART	Manhole Rectangular	Intersection Galore and Day	1965	\$ 3,221	\$ 3,221	\$0	\$0	\$0	\$0	\$3,221
LOCKHART	Manhole Circular	Hayes St	1965	\$ 3,221	\$ 3,221	\$0	\$0	\$0	\$0	\$3,221
LOCKHART	Manhole Circular	Lane, Green/Hebden St - cnr Day St	1965	\$ 3,221	\$ 3,221	\$0	\$0	\$0	\$0	\$3,221
LOCKHART	Manhole Circular	Lane, Green/Hebden St from Halliday	1965	\$ 3,221	\$ 3,221	\$0	\$0	\$0	\$0	\$3,221
LOCKHART	Manhole Circular	Lane, Green/Hebden St from Halliday	1965	\$ 3,221	\$ 3,221	\$0	\$0	\$0	\$0	\$3,221
LOCKHART	Manhole Circular	Intersection of Halliday St and Lane,	1965	\$ 3,221	\$ 3,221	\$0	\$0	\$0	\$0	\$3,221
LOCKHART	Manhole Circular	Lane, Drummond/Brookong St from H	1965	\$ 3,221	\$ 3,221	\$0	\$0	\$0	\$0	\$3,221
LOCKHART	Manhole Circular	Lane, Drummond/Brookong St from H	1965	\$ 3,221	\$ 3,221	\$0	\$0	\$0	\$0	\$3,221
LOCKHART	Manhole Circular	Matthews St between Drummond & B	1965	\$ 3,221	\$ 3,221	\$0	\$0	\$0	\$0	\$3,221
LOCKHART	Manhole Circular	Lane, Drummond/Brookong Sts from	1965	\$ 3,221	\$ 3,221	\$0	\$0	\$0	\$0	\$3,221
LOCKHART	Manhole Rectangular	Lane, Hebden/Drummond St from Hal	1966	\$ 3,221	\$ 3,221	\$0	\$0	\$0	\$0	\$3,221
LOCKHART	Manhole Circular	Urana St, beside Bush & Campbell	1965	\$ 3,221	\$ 3,221	\$0	\$0	\$0	\$0	\$3,221
LOCKHART	Manhole Circular	71 Urana St	1965	\$ 3,221	\$ 3,221	\$0	\$0	\$0	\$0	\$3,221
LOCKHART	Manhole Circular	63 Urana St	1965	\$ 3,221	\$ 3,221	\$0	\$0	\$0	\$0	\$3,221
LOCKHART	Manhole Circular	Lane, Rear 160 Green St	1965	\$ 3,221	\$ 3,221	\$0	\$0	\$0	\$0	\$3,221
LOCKHART	Manhole Circular	Green St, rear Lockhart Museum	1965	\$ 3,221	\$ 3,221	\$0	\$0	\$0	\$0	\$3,221
LOCKHART	Manhole Circular	Rear 35 Urana St	1965	\$ 3,221	\$ 3,221	\$0	\$0	\$0	\$0	\$3,221
LOCKHART	Manhole Circular	Halliday St, Walter Day Park	1965	\$ 3,221	\$ 3,221	\$0	\$0	\$0	\$0	\$3,221
LOCKHART	Manhole Circular	Green St	1966	\$ 3,221	\$ 3,221	\$0	\$0	\$0	\$0	\$3,221
LOCKHART	Manhole Circular	Green Street	1966	\$ 3,221	\$ 3,221	\$0	\$0	\$0	\$0	\$3,221
LOCKHART	Manhole Circular	187 Green St	1966	\$ 3,221	\$ 3,221	\$0	\$0	\$0	\$0	\$3,221
LOCKHART	Manhole Circular	Rear 186 Green St (Magnolia Lodge)	1965	\$ 3,221	\$ 3,221	\$0	\$0	\$0	\$0	\$3,221
LOCKHART	Manhole Circular	Rear 19-25 Urana St (New Gunyah H	1965	\$ 3,221	\$ 3,221	\$0	\$0	\$0	\$0	\$3,221
LOCKHART	Manhole Circular	Rear 53 Urana St	1965	\$ 3,221	\$ 3,221	\$0	\$0	\$0	\$0	\$3,221
LOCKHART	Manhole Circular	Rear 55 Urana St	1965	\$ 3,221	\$ 3,221	\$0	\$0	\$0	\$0	\$3,221
LOCKHART	Manhole Circular	79 Urana St	1965	\$ 3,221	\$ 3,221	\$0	\$0	\$0	\$0	\$3,221
LOCKHART	Manhole Circular	Front 25 Urana St	1965	\$ 3,221	\$ 3,221	\$0	\$0	\$0	\$0	\$3,221
LOCKHART	Manhole Circular	Front 19-25 Urana St	1965	\$ 3,221	\$ 3,221	\$0	\$0	\$0	\$0	\$3,221

Table 1: Lockhart Shire Council Existing Sewerage Assets

Service Area	Asset type	Asset Description	Year of Commissioning	Current Replacement Cost 2017/18 \$	Assets excluding reticulation	Assets excluding pre 1989	Lockhart	The Rock	Yerong Creek	Assets Excluded
LOCKHART	Manhole Circular	Lane, Green/Hebden St from East to	1965	\$ 3,221	\$ 3,221	\$0	\$0	\$0	\$0	\$3,221
LOCKHART	Manhole Circular	Lane, Galore/Ferrier from Urana to D	1965	\$ 3,221	\$ 3,221	\$0	\$0	\$0	\$0	\$3,221
LOCKHART	Manhole Circular	Day St	1965	\$ 3,221	\$ 3,221	\$0	\$0	\$0	\$0	\$3,221
LOCKHART	Manhole Circular	Holiday St, Walter Day Park	1965	\$ 3,221	\$ 3,221	\$0	\$0	\$0	\$0	\$3,221
LOCKHART	Manhole Circular	Holiday St	1965	\$ 3,221	\$ 3,221	\$0	\$0	\$0	\$0	\$3,221
LOCKHART	Manhole Circular	Holiday St	1965	\$ 3,221	\$ 3,221	\$0	\$0	\$0	\$0	\$3,221
LOCKHART	Manhole Circular	Lane, Hebden/Drummond St between	1965	\$ 3,221	\$ 3,221	\$0	\$0	\$0	\$0	\$3,221
LOCKHART	Manhole Circular	Lane, rear 32 Green St/31 Hebden St	1965	\$ 3,221	\$ 3,221	\$0	\$0	\$0	\$0	\$3,221
LOCKHART	Manhole Circular	Rear 15 Urana St	1965	\$ 3,221	\$ 3,221	\$0	\$0	\$0	\$0	\$3,221
THE ROCK	Manhole Circular	Lane, King/Nicholas St	1981	\$ 3,221	\$ 3,221	\$0	\$0	\$0	\$0	\$3,221
THE ROCK	Manhole Circular	Cornwall St	1981	\$ 3,221	\$ 3,221	\$0	\$0	\$0	\$0	\$3,221
THE ROCK	Manhole Circular	Cornwall St	1981	\$ 3,221	\$ 3,221	\$0	\$0	\$0	\$0	\$3,221
THE ROCK	Manhole Circular	Cornwall St	1981	\$ 3,221	\$ 3,221	\$0	\$0	\$0	\$0	\$3,221
THE ROCK	Manhole Circular	Urana/Cornwall St Intersection	1981	\$ 3,221	\$ 3,221	\$0	\$0	\$0	\$0	\$3,221
THE ROCK	Manhole Circular	Cornwall St	1981	\$ 3,221	\$ 3,221	\$0	\$0	\$0	\$0	\$3,221
THE ROCK	Manhole Circular	Wilson St	1981	\$ 3,221	\$ 3,221	\$0	\$0	\$0	\$0	\$3,221
THE ROCK	Manhole Circular	Wilson St	1981	\$ 3,221	\$ 3,221	\$0	\$0	\$0	\$0	\$3,221
THE ROCK	Manhole Circular	Intersection Wilson & Yerong St	1981	\$ 3,221	\$ 3,221	\$0	\$0	\$0	\$0	\$3,221
THE ROCK	Manhole Circular	Lane, Piper/Wilson St	1981	\$ 3,221	\$ 3,221	\$0	\$0	\$0	\$0	\$3,221
THE ROCK	Manhole Circular	Yerong St	1981	\$ 3,221	\$ 3,221	\$0	\$0	\$0	\$0	\$3,221
THE ROCK	Manhole Circular	Nicholas St	1993	\$ 3,221	\$ 3,221	\$3,221	\$0	\$3,221	\$0	\$0
THE ROCK	Manhole Circular	Nicholas St	1993	\$ 3,221	\$ 3,221	\$3,221	\$0	\$3,221	\$0	\$0
THE ROCK	Manhole Circular	Bretton/Nicholas St Intersection	1993	\$ 3,221	\$ 3,221	\$3,221	\$0	\$3,221	\$0	\$0
THE ROCK	Manhole Circular	Bretton St	1993	\$ 3,221	\$ 3,221	\$3,221	\$0	\$3,221	\$0	\$0
THE ROCK	Manhole Circular	TR	1993	\$ 3,221	\$ 3,221	\$3,221	\$0	\$3,221	\$0	\$0
THE ROCK	Manhole Circular	TR	1993	\$ 3,221	\$ 3,221	\$3,221	\$0	\$3,221	\$0	\$0
THE ROCK	Manhole Circular	Lane, Urana/King St	1993	\$ 3,221	\$ 3,221	\$3,221	\$0	\$3,221	\$0	\$0
THE ROCK	Manhole Circular	Lane, Urana/King St	1993	\$ 3,221	\$ 3,221	\$3,221	\$0	\$3,221	\$0	\$0
THE ROCK	Manhole Circular	Bretton St	1993	\$ 3,221	\$ 3,221	\$3,221	\$0	\$3,221	\$0	\$0
THE ROCK	Manhole Circular	Bretton St	1993	\$ 3,221	\$ 3,221	\$3,221	\$0	\$3,221	\$0	\$0
THE ROCK	Manhole Circular	Bretton St	1993	\$ 3,221	\$ 3,221	\$3,221	\$0	\$3,221	\$0	\$0
THE ROCK	Manhole Circular	Lane, Urana/King St	1993	\$ 3,221	\$ 3,221	\$3,221	\$0	\$3,221	\$0	\$0
THE ROCK	Manhole Circular	Lane, Wilson/Urana St	1993	\$ 3,221	\$ 3,221	\$3,221	\$0	\$3,221	\$0	\$0
THE ROCK	Manhole Circular	Bretton/Wilson St Intersection	1993	\$ 3,221	\$ 3,221	\$3,221	\$0	\$3,221	\$0	\$0
THE ROCK	Manhole Circular	Lane, Urana/King St	1993	\$ 3,221	\$ 3,221	\$3,221	\$0	\$3,221	\$0	\$0
THE ROCK	Manhole Circular	Bretton St	1993	\$ 3,221	\$ 3,221	\$3,221	\$0	\$3,221	\$0	\$0
THE ROCK	Manhole Circular	Lane, Piper/Wilson St	1993	\$ 3,221	\$ 3,221	\$3,221	\$0	\$3,221	\$0	\$0
THE ROCK	Manhole Circular	Lane, Piper/Wilson St	1993	\$ 3,221	\$ 3,221	\$3,221	\$0	\$3,221	\$0	\$0
THE ROCK	Manhole Circular	Piper St	1993	\$ 3,221	\$ 3,221	\$3,221	\$0	\$3,221	\$0	\$0
THE ROCK	Manhole Circular	Piper St	1993	\$ 3,221	\$ 3,221	\$3,221	\$0	\$3,221	\$0	\$0
THE ROCK	Manhole Circular	Emily St	1981	\$ 3,221	\$ 3,221	\$0	\$0	\$0	\$0	\$3,221
THE ROCK	Manhole Circular	Urana St Island	1981	\$ 3,221	\$ 3,221	\$0	\$0	\$0	\$0	\$3,221
THE ROCK	Manhole Circular	Lane, Nicholas St	1981	\$ 3,221	\$ 3,221	\$0	\$0	\$0	\$0	\$3,221
THE ROCK	Manhole Circular	Lane, Nicholas St	1981	\$ 3,221	\$ 3,221	\$0	\$0	\$0	\$0	\$3,221
THE ROCK	Manhole Circular	Rear Private Property, 119-121 Urana	1981	\$ 3,221	\$ 3,221	\$0	\$0	\$0	\$0	\$3,221
THE ROCK	Manhole Circular	John St	1981	\$ 3,221	\$ 3,221	\$0	\$0	\$0	\$0	\$3,221
THE ROCK	Manhole Circular	John St, opposite King St	1981	\$ 3,221	\$ 3,221	\$0	\$0	\$0	\$0	\$3,221
THE ROCK	Manhole Circular	Intersection of Lane rear Urana St, ar	1981	\$ 3,221	\$ 3,221	\$0	\$0	\$0	\$0	\$3,221
THE ROCK	Manhole Circular	John St	1981	\$ 3,221	\$ 3,221	\$0	\$0	\$0	\$0	\$3,221
THE ROCK	Manhole Circular	Lane, King/Nicholas St	1981	\$ 3,221	\$ 3,221	\$0	\$0	\$0	\$0	\$3,221
THE ROCK	Manhole Circular	Intersectino of Mixner and King St	1981	\$ 3,221	\$ 3,221	\$0	\$0	\$0	\$0	\$3,221
THE ROCK	Manhole Circular	Intersection of Mixner St and Lane, U	1981	\$ 3,221	\$ 3,221	\$0	\$0	\$0	\$0	\$3,221
THE ROCK	Manhole Circular	Lane, off John St - rear Coronation P	1981	\$ 3,221	\$ 3,221	\$0	\$0	\$0	\$0	\$3,221

Table 1: Lockhart Shire Council Existing Sewerage Assets

Service Area	Asset type	Asset Description	Year of Commissioning	Current Replacement Cost 2017/18 \$	Assets excluding reticulation	Assets excluding pre 1989	Lockhart	The Rock	Yerong Creek	Assets Excluded
THE ROCK	Manhole Circular	Lane, Urana/King St from Mixner to J	1981	\$ 3,221	\$ 3,221	\$0	\$0	\$0	\$0	\$3,221
THE ROCK	Manhole Circular	Lane, Urana/King St from Mixner to J	1981	\$ 3,221	\$ 3,221	\$0	\$0	\$0	\$0	\$3,221
THE ROCK	Manhole Circular	Lane, Wilson/Urana St	1981	\$ 3,221	\$ 3,221	\$0	\$0	\$0	\$0	\$3,221
THE ROCK	Manhole Circular	Lane, Wilson/Urana St	1981	\$ 3,221	\$ 3,221	\$0	\$0	\$0	\$0	\$3,221
THE ROCK	Manhole Circular	Wilson St	1981	\$ 3,221	\$ 3,221	\$0	\$0	\$0	\$0	\$3,221
THE ROCK	Manhole Circular	Lane, Mixner/Queen St	1981	\$ 3,221	\$ 3,221	\$0	\$0	\$0	\$0	\$3,221
THE ROCK	Manhole Circular	Lane, Mixner/Queen St	1981	\$ 3,221	\$ 3,221	\$0	\$0	\$0	\$0	\$3,221
THE ROCK	Manhole Circular	Private Property, Wilson St (Anglican)	1981	\$ 3,221	\$ 3,221	\$0	\$0	\$0	\$0	\$3,221
THE ROCK	Manhole Circular	The Rock Bowling Club, Urana St	1981	\$ 3,221	\$ 3,221	\$0	\$0	\$0	\$0	\$3,221
THE ROCK	Manhole Circular	The Rock Bowling Club	1981	\$ 3,221	\$ 3,221	\$0	\$0	\$0	\$0	\$3,221
THE ROCK	Manhole Circular	Wilson St	1981	\$ 3,221	\$ 3,221	\$0	\$0	\$0	\$0	\$3,221
THE ROCK	Manhole Circular	Ford St	1981	\$ 3,221	\$ 3,221	\$0	\$0	\$0	\$0	\$3,221
THE ROCK	Manhole Circular	The Rock Central School, Ford St	1981	\$ 3,221	\$ 3,221	\$0	\$0	\$0	\$0	\$3,221
THE ROCK	Manhole Circular	The Rock Central School, Ford St	1981	\$ 3,221	\$ 3,221	\$0	\$0	\$0	\$0	\$3,221
THE ROCK	Manhole Circular	Rear Private Property - Emily Garden	1981	\$ 3,221	\$ 3,221	\$0	\$0	\$0	\$0	\$3,221
THE ROCK	Manhole Circular	Lane, Davidson/Urana St from Day St	1981	\$ 3,221	\$ 3,221	\$0	\$0	\$0	\$0	\$3,221
THE ROCK	Manhole Circular	Lane, Davidson/Urana St between Day	1981	\$ 3,221	\$ 3,221	\$0	\$0	\$0	\$0	\$3,221
THE ROCK	Manhole Circular	Rear Private Property, 22 Day St	1981	\$ 3,221	\$ 3,221	\$0	\$0	\$0	\$0	\$3,221
THE ROCK	Manhole Circular	Adjacent to Pump Station 2 - Lane off	1981	\$ 3,221	\$ 3,221	\$0	\$0	\$0	\$0	\$3,221
THE ROCK	Manhole Circular	Chr Day & 1 Norman St	1981	\$ 3,221	\$ 3,221	\$0	\$0	\$0	\$0	\$3,221
THE ROCK	Manhole Circular	Lane, Norman/Davidson St	1981	\$ 3,221	\$ 3,221	\$0	\$0	\$0	\$0	\$3,221
THE ROCK	Manhole Circular	Lane, Norman/Davidson St	1981	\$ 3,221	\$ 3,221	\$0	\$0	\$0	\$0	\$3,221
THE ROCK	Manhole Circular	Lane, Norman/Davidson St	1981	\$ 3,221	\$ 3,221	\$0	\$0	\$0	\$0	\$3,221
THE ROCK	Manhole Circular	Lane, Norman/Davidson St	1981	\$ 3,221	\$ 3,221	\$0	\$0	\$0	\$0	\$3,221
THE ROCK	Manhole Circular	Rear Private Property, 25 Davidson St	1981	\$ 3,221	\$ 3,221	\$0	\$0	\$0	\$0	\$3,221
THE ROCK	Manhole Circular	Lane, Norman/Davidson St	1981	\$ 3,221	\$ 3,221	\$0	\$0	\$0	\$0	\$3,221
THE ROCK	Manhole Circular	Private Property, 1-3 Burkes St	1981	\$ 3,221	\$ 3,221	\$0	\$0	\$0	\$0	\$3,221
THE ROCK	Manhole Circular	St Mary's Churchyard, Urana/Ford St	1981	\$ 3,221	\$ 3,221	\$0	\$0	\$0	\$0	\$3,221
LOCKHART	Manhole Rectangular	Matthews St (rear Bendigo Bank)	1965	\$ 3,221	\$ 3,221	\$0	\$0	\$0	\$0	\$3,221
LOCKHART	Manhole Circular	Day St, Recreation Ground Boundary	1965	\$ 3,221	\$ 3,221	\$0	\$0	\$0	\$0	\$3,221
LOCKHART	Manhole Circular	9 Urana St	1965	\$ 3,221	\$ 3,221	\$0	\$0	\$0	\$0	\$3,221
LOCKHART	Pump Station 40L	Walter Day Park	1967	\$ 630,000	\$ 630,000	\$0	\$0	\$0	\$0	\$630,000
LOCKHART	Pump Station 10L	Rear 200 Green Street	1965	\$ 320,000	\$ 320,000	\$0	\$0	\$0	\$0	\$320,000
THE ROCK	Pump Station 30L	Wilson St	1982	\$ 530,000	\$ 530,000	\$0	\$0	\$0	\$0	\$530,000
THE ROCK	Pump Station 10L	End Norman St	1982	\$ 320,000	\$ 320,000	\$0	\$0	\$0	\$0	\$320,000
THE ROCK	Pump Station 30L	Bretton St	1983	\$ 530,000	\$ 530,000	\$530,000	\$0	\$530,000	\$0	\$0
LOCKHART	Pump Station 10L	Hayes St	1965	\$ 320,000	\$ 320,000	\$0	\$0	\$0	\$0	\$320,000
LOCKHART	Manhole Circular	0%	1967	\$ 3,221	\$ 3,221	\$0	\$0	\$0	\$0	\$3,221
LOCKHART	Manhole Circular	Halliday St	1965	\$ 3,221	\$ 3,221	\$0	\$0	\$0	\$0	\$3,221
THE ROCK	Manhole Circular	Wilson St	1981	\$ 3,221	\$ 3,221	\$0	\$0	\$0	\$0	\$3,221
THE ROCK	Manhole Circular	Rear Private Property, Urana St	1981	\$ 3,221	\$ 3,221	\$0	\$0	\$0	\$0	\$3,221
THE ROCK	Manhole Circular	Rear Private Property, Urana St	1981	\$ 3,221	\$ 3,221	\$0	\$0	\$0	\$0	\$3,221
THE ROCK	Manhole Circular	Rear Private Property, 111-113 Urana	1981	\$ 3,221	\$ 3,221	\$0	\$0	\$0	\$0	\$3,221
THE ROCK	Manhole Circular	Lane, Norman/Davidson St	1981	\$ 3,221	\$ 3,221	\$0	\$0	\$0	\$0	\$3,221
THE ROCK	Manhole Circular	Lane, Norman/Davidson St	1981	\$ 3,221	\$ 3,221	\$0	\$0	\$0	\$0	\$3,221
THE ROCK	Manhole Circular	Rear Private Property, Day St	1981	\$ 3,221	\$ 3,221	\$0	\$0	\$0	\$0	\$3,221
THE ROCK	Manhole Circular	Private Property, Burkes St	1981	\$ 3,221	\$ 3,221	\$3,221	\$0	\$3,221	\$0	\$0
THE ROCK	Manhole Circular	Piper St	1993	\$ 3,221	\$ 3,221	\$3,221	\$0	\$3,221	\$0	\$0
LOCKHART	Manhole Circular	Green Street	2011	\$ 3,221	\$ 3,221	\$3,221	\$3,221	\$0	\$0	\$0
LOCKHART	Manhole Circular	Green Street	2011	\$ 3,221	\$ 3,221	\$3,221	\$3,221	\$0	\$0	\$0
LOCKHART	Manhole Circular	Green Street	2011	\$ 3,221	\$ 3,221	\$3,221	\$3,221	\$0	\$0	\$0
LOCKHART	Manhole Circular	Green Street	2011	\$ 3,221	\$ 3,221	\$3,221	\$3,221	\$0	\$0	\$0
LOCKHART	Manhole Circular	Rockliff Court	2011	\$ 3,221	\$ 3,221	\$3,221	\$3,221	\$0	\$0	\$0

Table 1: Lockhart Shire Council Existing Sewerage Assets

Service Area	Asset type	Asset Description	Year of Commissioning	Current Replacement Cost 2017/18 \$	Assets excluding reticulation	Assets excluding pre 1989	Lockhart	The Rock	Yerong Creek	Assets Excluded
LOCKHART	Manhole Circular	Prichard Place	2011	\$ 3,221	\$ 3,221	\$ 3,221	\$3,221	\$0	\$0	\$0
LOCKHART	Manhole Circular	Prichard Place	2011	\$ 3,221	\$ 3,221	\$ 3,221	\$3,221	\$0	\$0	\$0
LOCKHART	Manhole Circular	Prichard Place	2011	\$ 3,221	\$ 3,221	\$ 3,221	\$3,221	\$0	\$0	\$0
LOCKHART	Manhole Circular	Prichard Place	2011	\$ 3,221	\$ 3,221	\$ 3,221	\$3,221	\$0	\$0	\$0
LOCKHART	Manhole Circular	Rockcliff Court	2011	\$ 3,221	\$ 3,221	\$ 3,221	\$3,221	\$0	\$0	\$0
LOCKHART	Manhole Circular	Rockcliff Court	2011	\$ 3,221	\$ 3,221	\$ 3,221	\$3,221	\$0	\$0	\$0
THE ROCK	Pasveer Channel	Bullenbong Road	1982	\$ 230,000	\$ 230,000	\$0	\$0	\$0	\$0	\$230,000
THE ROCK	Preliminary Treatment	Bullenbong Road	1982	\$ 95,400	\$ 95,400	\$0	\$0	\$0	\$0	\$95,400
LOCKHART	Re-Use Shed & Ancillary	Urana Lockhart Road	2001	\$ 20,000	\$ 20,000	\$20,000	\$20,000	\$0	\$0	\$0
LOCKHART	Trickling Filter	Urana Lockhart Road	1968	\$ 230,000	\$ 230,000	\$0	\$0	\$0	\$0	\$230,000
LOCKHART	Preliminary Treatment	Urana Lockhart Road	1968	\$ 95,400	\$ 95,400	\$0	\$0	\$0	\$0	\$95,400
LOCKHART	Re-Use Treatment System		2001	\$ 57,000	\$ 57,000	\$57,000	\$57,000	\$0	\$0	\$0
LOCKHART	Re-Use Pump & Sand Filter	Urana Lockhart Road	2001	\$ 57,000	\$ 57,000	\$57,000	\$57,000	\$0	\$0	\$0
LOCKHART	Effluent Pond	Concrete	1964	\$ 175,000	\$ 175,000	\$0	\$0	\$0	\$0	\$175,000
LOCKHART	Effluent Pond	Concrete	1964	\$ 175,000	\$ 175,000	\$0	\$0	\$0	\$0	\$175,000
LOCKHART	Effluent Pond	Concrete	1964	\$ 175,000	\$ 175,000	\$0	\$0	\$0	\$0	\$175,000
LOCKHART	Effluent Pond	Concrete	1964	\$ 175,000	\$ 175,000	\$0	\$0	\$0	\$0	\$175,000
LOCKHART	Effluent Pond	Concrete	1964	\$ 175,000	\$ 175,000	\$0	\$0	\$0	\$0	\$175,000
LOCKHART	Effluent Pond	Concrete	1964	\$ 175,000	\$ 175,000	\$0	\$0	\$0	\$0	\$175,000
YERONG CREEK	Effluent Pond	Concrete	2004	\$ 60,000	\$ 60,000	\$60,000	\$60,000	\$0	\$60,000	\$0
YERONG CREEK	Effluent Pond	Concrete	2004	\$ 66,000	\$ 66,000	\$66,000	\$66,000	\$0	\$66,000	\$0
YERONG CREEK	Effluent Pond	Concrete	2004	\$ 66,000	\$ 66,000	\$66,000	\$66,000	\$0	\$66,000	\$0
LOCKHART	Lockhart STP - Siteworks	Unknown	2004	\$ 340,000	\$ 340,000	\$0	\$0	\$0	\$0	\$340,000
THE ROCK	The Rock STP - Siteworks	Unknown	1982	\$ 340,000	\$ 340,000	\$0	\$0	\$0	\$0	\$340,000
YERONG CREEK	Yerong Creek STP - Siteworks	Unknown	2004	\$ 340,000	\$ 340,000	\$340,000	\$0	\$0	\$340,000	\$0
THE ROCK	Effluent Pond	Concrete	2017	\$ 350,000	\$ 350,000	\$350,000	\$0	\$350,000	\$0	\$0
THE ROCK	Effluent Pond	Concrete	2017	\$ 350,000	\$ 350,000	\$350,000	\$0	\$350,000	\$0	\$0
THE ROCK	Effluent Pond	Concrete	2017	\$ 350,000	\$ 350,000	\$350,000	\$0	\$350,000	\$0	\$0
LOCKHART	Fence	Major Pump Station	2010	\$ -	\$ -	\$0	\$0	\$0	\$0	\$0
LOCKHART	Electrical Board	Major Pump Station	1967	\$ -	\$ -	\$0	\$0	\$0	\$0	\$0
LOCKHART	Valve Pit	Major Pump Station	1967	\$ -	\$ -	\$0	\$0	\$0	\$0	\$0
LOCKHART	Well	Major Pump Station	1967	\$ -	\$ -	\$0	\$0	\$0	\$0	\$0
LOCKHART	Pump	Major Pump Station	1965	\$ -	\$ -	\$0	\$0	\$0	\$0	\$0
LOCKHART	Pump Electrical Lockhart	Minor Pump Station	2001	\$ 100,000	\$ 100,000	\$100,000	\$100,000	\$0	\$0	\$0
LOCKHART	Pump Electrical Lockhart	Major Pump Station	2001	\$ 100,000	\$ 100,000	\$100,000	\$100,000	\$0	\$0	\$0
LOCKHART	Pump Electrical Lockhart	Minor Pump Station	2001	\$ 100,000	\$ 100,000	\$100,000	\$100,000	\$0	\$0	\$0
THE ROCK	Pump Electrical The Rock	Minor Pump Station	2001	\$ 100,000	\$ 100,000	\$100,000	\$0	\$100,000	\$0	\$0
THE ROCK	Pump Electrical The Rock	Minor Pump Station	2001	\$ 100,000	\$ 100,000	\$100,000	\$0	\$100,000	\$0	\$0
THE ROCK	Pump Electrical The Rock	Major Pump Station	2001	\$ 100,000	\$ 100,000	\$100,000	\$0	\$100,000	\$0	\$0
THE ROCK	STP Electrical TR	Treatment Plant	2003	\$ 496,000	\$ 496,000	\$496,000	\$0	\$496,000	\$0	\$0
YERONG CREEK	STP Electrical YCK	Treatment Plant	2004	\$ 197,000	\$ 197,000	\$197,000	\$0	\$197,000	\$0	\$0
LOCKHART	STP Electrical Lkt	Treatment Plant	2003	\$ 385,000	\$ 385,000	\$385,000	\$385,000	\$0	\$0	\$0
				\$ 15,973,857	\$ 9,784,739	\$ 4,231,195	\$ 860,873	\$ 2,470,567	\$ 899,755	\$ 11,742,661

Table 2: Lockhart Shire Council Sewerage Capital Works Program

All values are in year 2017/18 (\$)

Project	ILOS	Growth	Renewals	Check	Project Total	2017/18	2018/19	2019/20	2020/21	2021/22	2022/23	2023/24	2024/25	2025/26	2028/27	
Lockhart				1,044,000												
Replace VC and AC Pipes (including house service lines)	20%	5%	75%	100%	300,000	60,000	0	60,000	0	60,000	0	60,000	0	60,000	0	
Lockhart PS - Replace Pumps	20%		80%	100%	150,000	0	0	0	150,000	0	0	0	0	0	0	
Lockhart STP Renewals	0%	10%	90%	100%	280,000	20,000	20,000	20,000	20,000	50,000	50,000	20,000	20,000	20,000	20,000	
Trial cleaning of AC pipe			100%	100%	0	0	0	0	0	0	0	0	0	0	0	
Investigate sulphide and determine relining program			100%	100%	10,000	10,000	0	0	0	0	0	0	0	0	0	
CCTV remaining AC pipe			100%	100%	50,000	10,000	10,000	10,000	10,000	10,000	0	0	0	0	0	
Determine sulphide issues and determine relining			100%	100%	10,000	10,000	0	0	0	0	10,000	0	0	0	0	
CCTV of VC pipeline			100%	100%	15,000	3,000	3,000	3,000	3,000	3,000	0	0	0	0	0	
Chemical dosing to reduce sulphide slimes			100%	100%	25,000	5,000	10,000	10,000	0	0	0	0	0	0	0	
Resurvey uPVC to determine oval deformation			100%	100%	14,000	0	0	14,000	0	0	0	0	0	0	0	
Replace vent stack at SPS1			100%	100%	2,000	0	0	0	0	0	0	0	0	0	0	
Core sample at CPS to determine structural strength			100%	100%	0	0	0	0	0	0	0	0	0	0	0	
Elevated work platform and replace controls at SPS1			100%	100%	10,000	0	10,000	0	0	0	0	0	0	0	0	
Unplanned capital replacement			100%	100%	80,000	0	0	100,000	10,000	10,000	10,000	10,000	10,000	10,000	10,000	
Re-use Lockhart Upgrades			100%	100%	100,000	0	0	100,000	0	0	0	0	0	0	0	
Slab strengthening at SPS1 subject to LPS2			100%	100%	15,000	0	0	15,000	0	0	0	0	0	0	0	
Inspect rising main from SPS1			100%	100%	3,000	0	0	3,000	0	0	0	0	0	0	0	
The Rock				2,884,000												
Replace VC and AC Pipes (including house service lines)	20%	5%	75%	100%	300,000	0	0	0	0	60,000	60,000	60,000	60,000	60,000	0	
The Rock PS - Replace Pumps	20%		80%	100%	150,000	0	0	150,000	0	0	0	0	0	0	0	
The Rock STP Renewal	0%	0%	100%	100%	250,000	50,000	0	0	0	50,000	50,000	50,000	50,000	0	0	
CCTV large dia VC pipelines			100%	100%	20,000	0	0	0	20,000	0	0	0	0	0	0	
CCTV in proximity to SPS1			100%	100%	40,000	10,000	10,000	10,000	10,000	0	0	0	0	0	0	
Sewerage extension The Rock	50%	50%	100%	100%	1,550,000	110,000	450,000	10,000	0	0	0	0	0	0	0	
Move electrical controls and power supply			100%	100%	45,000	0	0	15,000	15,000	15,000	0	0	0	0	0	
Pipeline asset register			100%	100%	4,000	4,000	0	0	0	0	0	0	0	0	0	
Clean vent stack surfaces			100%	100%	50,000	5,000	5,000	5,000	5,000	5,000	5,000	5,000	5,000	5,000	5,000	
Construct platforms similar to Platform at SPS3			100%	100%	10,000	0	0	10,000	0	0	0	0	0	0	0	
Protective mesh inside wet wells			100%	100%	0	0	0	0	0	0	0	0	0	0	0	
Rising main condition assessment			100%	100%	17,000	0	0	0	0	0	0	0	0	0	0	
Unplanned capital replacement			100%	100%	80,000	0	0	100,000	10,000	10,000	10,000	10,000	10,000	10,000	10,000	
The Rock new system - Reuse			100%	100%	360,000	0	0	60,000	0	0	10,000	10,000	10,000	0	0	
WHKS Audits at pump stations			100%	100%	8,000	2,000	2,000	2,000	2,000	0	0	0	0	0	0	
Yerong Creek				180,000												
Replace VC and AC Pipes (including house service lines)	20%	0%	80%	100%	0	0	0	0	0	0	0	0	0	0	0	
Yerong CK PS - Replace Pumps	0%	2%	98%	100%	40,000	4,000	4,000	4,000	4,000	4,000	4,000	4,000	4,000	4,000	4,000	
Unplanned capital replacement			100%	100%	40,000	0	0	5,000	5,000	5,000	5,000	5,000	5,000	5,000	5,000	
Yerong CK STP Replacement	0%	0%	100%	100%	100,000	0	0	0	0	0	0	0	0	100,000	0	
Discretionary Capital																
Unplanned capital replacement			100%	100%	0	0	0	0	0	0	0	0	0	0	0	
Total					4,108,000	1,285,000	524,000	167,000	613,000	282,000	304,000	324,000	281,000	274,000	54,000	
					\$,000											
					\$	955,000	562,000	225,000	12,000	60,000	24,000	24,000	12,000	24,000	24,000	0
					\$	1,197,800	555,080	227,080	5,080	62,080	11,080	108,080	105,080	105,080	8,080	2,080
					\$	1,961,200	167,920	71,920	149,920	490,920	246,920	183,920	191,920	163,920	241,920	51,920
					\$	3,153,000	\$ 723,000	\$ 299,000	\$ 155,000	\$ 553,000	\$ 255,000	\$ 292,000	\$ 300,000	\$ 269,000	\$ 250,000	\$ 54,000

Table 3: Lockhart Shire Council Sewerage Capital Charge Calculations

Year of Commissioning	Effective Year of Commissioning	Capital Cost of existing assets (\$)	Capital Cost of renewals only (\$)	Capital Cost of new assets only (\$)	Percentage of capital works for renewals utilised by new ETs after 1995/96	Effective Capital Cost (\$)	Rate of Return (%)	PV Factor	PV of capital costs (2017/18\$)
Yerong Creek									
Existing									
Assets commissioned in 1989	1986	\$0	\$0	\$0	34.0%	\$0	3%	1.00	\$0
Assets commissioned in 1990	1986	\$0	\$0	\$0	34.0%	\$0	3%	1.00	\$0
Assets commissioned in 1991	1986	\$0	\$0	\$0	34.0%	\$0	3%	1.00	\$0
Assets commissioned in 1992	1986	\$0	\$0	\$0	34.0%	\$0	3%	1.00	\$0
Assets commissioned in 1993	1986	\$0	\$0	\$0	34.0%	\$0	3%	1.00	\$0
Assets commissioned in 1994	1986	\$0	\$0	\$0	34.0%	\$0	3%	1.00	\$0
Subtotal (Assets pre-1996)		\$0	\$0	\$0		\$0		1.00	\$0
Assets commissioned in 1996	1996	\$0	\$0	\$0		\$0	5%	1.00	\$0
Assets commissioned in 1997	1996	\$0	\$0	\$0		\$0	5%	0.95	\$0
Assets commissioned in 1998	1998	\$0	\$0	\$0		\$0	5%	0.91	\$0
Assets commissioned in 1999	1999	\$0	\$0	\$0		\$0	5%	0.86	\$0
Assets commissioned in 2000	2000	\$0	\$0	\$0		\$0	5%	0.82	\$0
Assets commissioned in 2001	2001	\$0	\$0	\$0		\$0	5%	0.78	\$0
Assets commissioned in 2002	2002	\$170,755	\$170,755	\$0		\$170,755	5%	0.75	\$127,801
Assets commissioned in 2003	2003	\$729,000	\$729,000	\$0		\$729,000	5%	0.71	\$441,279
Assets commissioned in 2004	2004	\$0	\$0	\$0		\$0	5%	0.68	\$0
Assets commissioned in 2005	2005	\$0	\$0	\$0		\$0	5%	0.64	\$0
Assets commissioned in 2006	2006	\$0	\$0	\$0		\$0	5%	0.61	\$0
Assets commissioned in 2007	2007	\$0	\$0	\$0		\$0	5%	0.58	\$0
Assets commissioned in 2008	2008	\$0	\$0	\$0		\$0	5%	0.56	\$0
Assets commissioned in 2009	2009	\$0	\$0	\$0		\$0	5%	0.53	\$0
Assets commissioned in 2010	2010	\$0	\$0	\$0		\$0	5%	0.51	\$0
Assets commissioned in 2011	2011	\$0	\$0	\$0		\$0	5%	0.48	\$0
Assets commissioned in 2012	2012	\$0	\$0	\$0		\$0	5%	0.46	\$0
Assets commissioned in 2013	2013	\$0	\$0	\$0		\$0	5%	0.44	\$0
Assets commissioned in 2014	2014	\$0	\$0	\$0		\$0	5%	0.42	\$0
Assets commissioned in 2015	2015	\$0	\$0	\$0		\$0	5%	0.40	\$0
Assets commissioned in 2016	2016	\$0	\$0	\$0		\$0	5%	0.38	\$0
Assets commissioned in 2017	2017	\$0	\$0	\$0		\$0	5%	0.36	\$0
Future		\$ 898,755	\$ 898,755	\$ 898,755		\$ 898,755			\$ 209,118
Assets planned in 2017/18	2018	\$0	\$3,920	\$3,920		\$3,920	5%	0.34	\$1,361
Assets planned in 2018/19	2019	\$0	\$3,920	\$3,920		\$3,920	5%	0.33	\$1,361
Assets planned in 2019/20	2020	\$0	\$3,920	\$3,920		\$3,920	5%	0.31	\$949
Assets planned in 2020/21	2021	\$0	\$3,920	\$3,920		\$3,920	5%	0.30	\$904
Assets planned in 2021/22	2022	\$0	\$3,920	\$3,920		\$3,920	5%	0.28	\$661
Assets planned in 2022/23	2023	\$0	\$3,920	\$3,920		\$3,920	5%	0.27	\$620
Assets planned in 2023/24	2024	\$0	\$3,920	\$3,920		\$3,920	5%	0.26	\$581
Assets planned in 2024/25	2025	\$0	\$3,920	\$3,920		\$3,920	5%	0.24	\$444
Assets planned in 2025/26	2026	\$0	\$3,920	\$3,920		\$3,920	5%	0.23	\$416
Assets planned in 2026/27	2027	\$0	\$3,920	\$3,920		\$3,920	5%	0.22	\$389
Assets planned in 2027/28	2028	\$0	\$3,920	\$3,920		\$3,920	5%	0.21	\$364
Assets planned in 2028/29	2029	\$0	\$3,920	\$3,920		\$3,920	5%	0.20	\$341
Assets planned in 2029/30	2030	\$0	\$3,920	\$3,920		\$3,920	5%	0.19	\$318
Assets planned in 2030/31	2031	\$0	\$3,920	\$3,920		\$3,920	5%	0.18	\$297
Assets planned in 2031/32	2032	\$0	\$3,920	\$3,920		\$3,920	5%	0.17	\$277
Assets planned in 2032/33	2033	\$0	\$3,920	\$3,920		\$3,920	5%	0.16	\$258
Assets planned in 2033/34	2034	\$0	\$3,920	\$3,920		\$3,920	5%	0.16	\$241
Assets planned in 2034/35	2035	\$0	\$3,920	\$3,920		\$3,920	5%	0.15	\$225
Assets planned in 2035/36	2036	\$0	\$3,920	\$3,920		\$3,920	5%	0.14	\$210
Assets planned in 2036/37	2037	\$0	\$3,920	\$3,920		\$3,920	5%	0.14	\$196
Assets planned in 2037/38	2038	\$0	\$3,920	\$3,920		\$3,920	5%	0.13	\$182
Assets planned in 2038/39	2039	\$0	\$3,920	\$3,920		\$3,920	5%	0.12	\$169
Assets planned in 2039/40	2040	\$0	\$3,920	\$3,920		\$3,920	5%	0.12	\$157
Assets planned in 2040/41	2041	\$0	\$3,920	\$3,920		\$3,920	5%	0.11	\$146
Assets planned in 2041/42	2042	\$0	\$3,920	\$3,920		\$3,920	5%	0.11	\$135
Assets planned in 2042/43	2043	\$0	\$3,920	\$3,920		\$3,920	5%	0.10	\$125
Assets planned in 2043/44	2044	\$0	\$3,920	\$3,920		\$3,920	5%	0.10	\$115
Assets planned in 2044/45	2045	\$0	\$3,920	\$3,920		\$3,920	5%	0.09	\$106
Assets planned in 2045/46	2046	\$0	\$3,920	\$3,920		\$3,920	5%	0.09	\$97
Assets planned in 2046/47	2047	\$0	\$3,920	\$3,920		\$3,920	5%	0.08	\$89
Subtotal (Assets post-1996)		\$ 179,200	\$ 179,200	\$ 179,200		\$ 179,200		\$ 61,258	\$ 224,338
Total		\$ 898,755	\$ 898,755	\$ 898,755		\$ 898,755		\$ 306,058	\$ 624,338

Total ET	New ETs per year	PV of new ETs (83%)	PV of new ETs (85%)	Capital Charge per ET (2017/18\$)
	18	0.1	0.1	0.1
	18	0.1	0.1	0.1
	18	0.1	0.1	0.1
	18	0.1	0.1	0.1
	19	0.2	0.2	0.2
	19	0.2	0.2	0.2
	19	0.2	0.2	0.2
	19	0.2	0.2	0.2
	19	0.2	0.2	0.2
	19	0.2	0.2	0.2
	19	0.2	0.2	0.2
	20	0.2	0.2	0.2
	20	0.2	0.2	0.2
	20	0.2	0.2	0.2
	20	0.2	0.2	0.2
	21	0.2	0.2	0.2
	21	0.2	0.2	0.2
	21	0.2	0.2	0.2
	21	0.2	0.2	0.2
	21	0.2	0.2	0.2
	21	0.2	0.2	0.2
	22	0.2	0.2	0.2
	22	0.2	0.2	0.2
	22	0.2	0.2	0.2
	22	0.2	0.2	0.2

Growth rate 0.80%

2019,118

15,221

TOTAL CAPITAL CHARGE PER ET

\$ 68,169

\$ 69,169

Table 3: Lockhart Shire Council Sewerage Capital Charge Calculations

Year of Commissioning	Effective Year of Commissioning	Capital Cost of existing assets (\$)	Capital Cost of renewals only (\$)	Capital Cost of new assets only (\$)	Percentage of capital works for renewals utilised by new ETs after 1995/96	Effective Capital Cost (\$)	Rate of Return (%)	PV Factor	PV of capital costs (2017/18\$)
-----------------------	---------------------------------	--------------------------------------	------------------------------------	--------------------------------------	----------------------------------------------------------------------------	-----------------------------	--------------------	-----------	---------------------------------

Total ET	New ETs per year	PV of new ETs (@3%)	PV of new ETs (@5%)	Capital Charge per ET (2017/18\$)
----------	------------------	---------------------	---------------------	-----------------------------------

Table 4: Lockhart Shire Council Sewerage Developer Charge Calculation

CPI (Consumer Price Index), Sydney
June 16 - June 17

% change
2.2%

Service area	Capital Charge per ET (2017/18\$)	% of highest	% of highest	DSP areas	Capital charge for each DSP area (\$/ET)	Reduction Amount (\$/ET)	Calculated Developer Charge (\$/ET) 2017/18	Calculated Developer Charge (\$/ET) 2018/19	Council Proposed Developer Charge (\$/ET) 2018/19
Yerong Creek	\$ 69,169	100%		SDSP1	\$69,169		\$ 66,924	\$ 68,397	
The Rock	\$ 21,931	32%	100%	SDSP2	\$21,931	\$ 2,244	\$ 19,687	\$ 20,120	\$ 1,362
Lockhart	\$ 4,278		20%	100% SDSP3	\$4,278		\$ 2,033	\$ 2,078	

Table 5: Lockhart Shire Council Sewerage Reduction Amount Calculation

	Current estimated (\$/ET)
Sewerage Bill	\$ 588
Annual OMA	\$ 396
Net Income	\$ 192

	2016/17
Total Charge Income	\$ 411,000
Total Ets	699
Annual Bill per ET (\$)	\$ 588
Total OMA Cost	\$ 277,000
OMA per ET (\$)	\$ 396

Year	Total ETs	New ETs	PV Factor	PV of new ETs (@5%)	Cumulative new ETs	Net income from new ETs	PV of Net income from new ETs (@5%)	Reduction Amount (\$/ET)
0 2017/18	705							
1 2018/19	710	6	1.00	6	6	\$1,081	\$1,081	
2 2019/20	716	6	0.95	5	11	\$2,170	\$2,066	
3 2020/21	722	6	0.91	5	17	\$3,268	\$2,964	
4 2021/22	728	6	0.86	5	23	\$4,374	\$3,779	
5 2022/23	733	6	0.82	5	29	\$5,490	\$4,517	
6 2023/24	739	6	0.78	5	35	\$6,615	\$5,183	
7 2024/25	745	6	0.75	4	40	\$7,748	\$5,782	
8 2025/26	751	6	0.71	4	46	\$8,891	\$6,318	
9 2026/27	757	6	0.68	4	52	\$10,042	\$6,797	
10 2027/28	763	6	0.64	4	58	\$11,203	\$7,222	
11 2028/29	769	6	0.61	4	65	\$12,373	\$7,596	
12 2029/30	775	6	0.58	4	71	\$13,553	\$7,924	
13 2030/31	782	6	0.56	3	77	\$14,742	\$8,209	
14 2031/32	788	6	0.53	3	83	\$15,940	\$8,454	
15 2032/33	794	6	0.51	3	89	\$17,149	\$8,661	
16 2033/34	801	6	0.48	3	96	\$18,366	\$8,835	
17 2034/35	807	6	0.46	3	102	\$19,594	\$8,976	
18 2035/36	813	6	0.44	3	109	\$20,831	\$9,089	
19 2036/37	820	7	0.42	3	115	\$22,078	\$9,174	
20 2037/38	826	7	0.40	3	122	\$23,336	\$9,235	
21 2038/39	833	7	0.38	2	128	\$24,603	\$9,273	
22 2039/40	840	7	0.36	2	135	\$25,880	\$9,290	
23 2040/41	846	7	0.34	2	142	\$27,168	\$9,287	
24 2041/42	853	7	0.33	2	149	\$28,466	\$9,268	
25 2042/43	860	7	0.31	2	155	\$29,774	\$9,232	
26 2043/44	867	7	0.30	2	162	\$31,093	\$9,182	
27 2044/45	874	7	0.28	2	169	\$32,422	\$9,118	
28 2045/46	881	7	0.27	2	176	\$33,762	\$9,043	
29 2046/47	888	7	0.26	2	183	\$35,113	\$8,957	
30 2047/48	895	7	0.24	2	190	\$36,474	\$8,861	
		190		100			\$ 223,370	\$ 2,244

Appendix C

Outline of Legislation

(Source: Developer Charges Guidelines for Water Supply, Sewerage and Stormwater (2016))

Outline of Legislation

Local Government Act 1993

The power for local government councils to levy developer charges for water supply, sewerage and stormwater derives from section 64 of the Local Government Act 1993 by means of a cross-reference in that Act to the relevant provisions of the Water Management Act 2000.

Section 64 of the Local Government Act states that:

Division 5 of Part 2 of Chapter 6 of the Water Management Act 2000 applies to a council exercising function under this Division in the same way as it applies to a water supply authority exercising functions under that Act.

Environmental Planning and Assessment Act 1979

Prior to the introduction of the Local Government Act in 1993, councils used the provisions of section 94 of the Environmental Planning and Assessment Act 1979 to obtain developer contributions for water supply services. As part of the Local Government (Consequential Provisions) Act 1993, amendment was made to the Environmental Planning and Assessment Act so that section 94 no longer applied for water supply services.

However, Councils can levy developer charges for stormwater under either Local Government Act or Water Management Act.

Water Management Act 2000

Section 305 (1) of the Water Management Act states that:

- (1) A person may apply to a water supply authority for a certificate of compliance for development carried out, or proposed to be carried out, within the water supply authority's area.

Section 306 (2) and (3) of the Water Management Act states that:

- (2) as a pre-condition to granting a certificate of compliance for development, a water supply authority may, by notice in writing served on the applicant, require the applicant to do either or both of the following:
 - (a) to pay a specified amount to the Authority by way of contribution towards the cost of such water management works as are specified in the notice, being existing works or projected works, or both,
 - (b) To construct water management works to serve the development.
- (3) In calculating an amount for the purposes of subsection (2) (a):
 - (a) the value of existing water management works and the estimated cost of projected water management works may be taken into consideration, and
 - (b) the amount of any government subsidy or similar payment is not to be deducted from the relevant value or cost of the water management works, and
 - (c) Consideration is to be given to any guidelines issued for the time being for the purposes of this section by the Minister.

In 2011, the Minister for Primary Industries became responsible for non-metropolitan NSW town water services. The Minister is responsible for the issue of guidelines for water utilities on the calculation of water supply, sewerage and stormwater developer charges.

Note: Use of moneys raised from developer charges is discussed in section 2.7 on page 10 of the guidelines.

Local Government (Savings and Transitional) Regulation 1993

The Local Government (Savings and Transitional) Regulation 1993 covers the matter of developer contributions which had previously been obtained by councils under the Environmental Planning and Assessment Act as follows:

(9) Any monetary contribution held by a council immediately before the commencement of this Regulation, being a contribution arising from a condition:

(a) that was imposed under section 94 of the *Environmental Planning and Assessment Act 1979*; and

(b) that specifies that the contribution is to be applied towards providing specified water or sewerage services or towards providing water or sewerage services generally,

is to be applied towards the construction of works within the meaning of Division 2 of Part 3 of the *Water Supply Authorities Act 1987*, or towards the repayment of money borrowed for the construction of such works, and is not to be applied towards any other purpose.