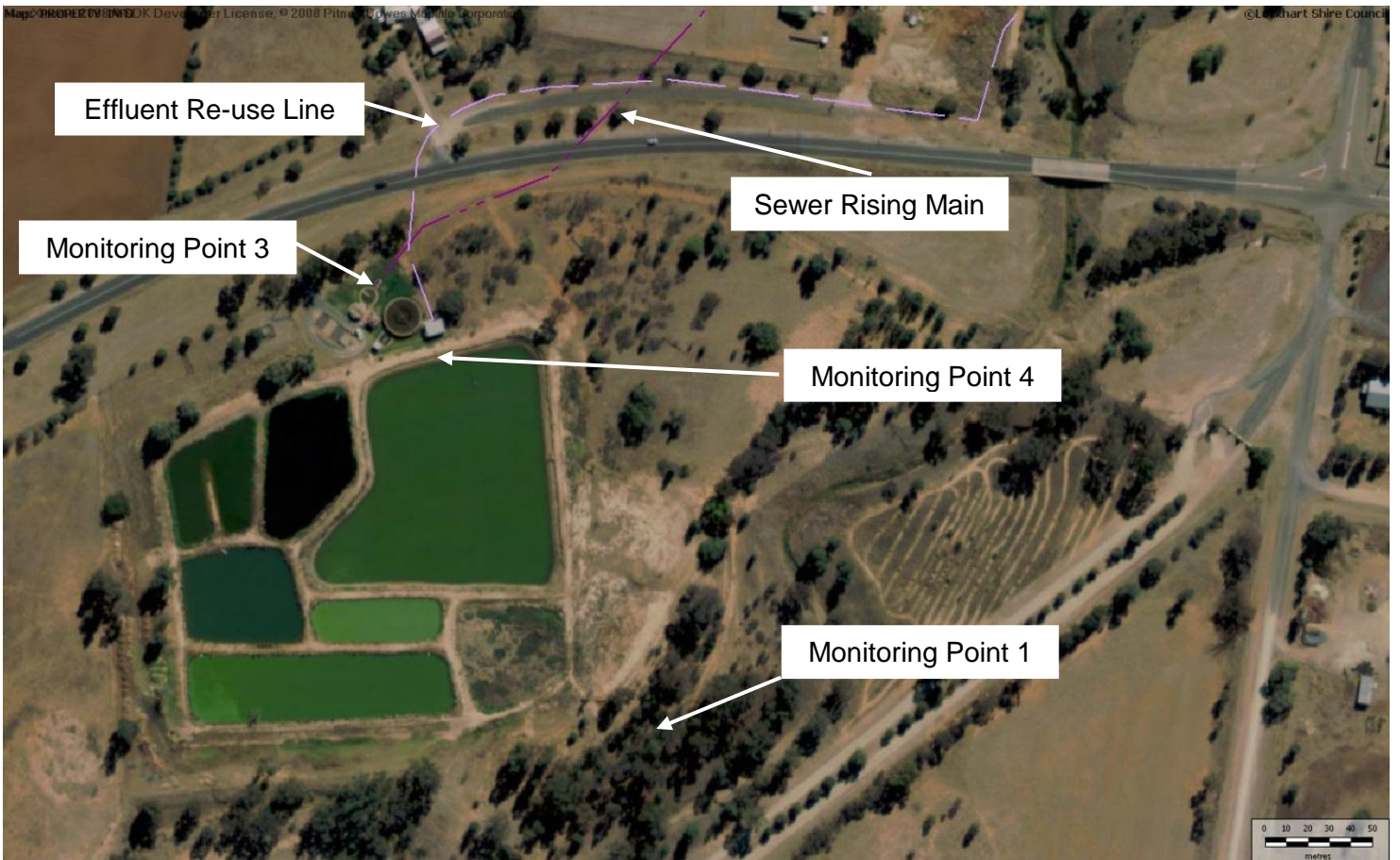


LOCKHART EFFLUENT REUSE



LOCKHART SEWERAGE TREATMENT WORKS



Monitoring Point 1

Location: Flow meter discharge channel to Brookong Creek

Obtained: Quarterly

Sampled: Ongoing

Item	Unit	Frequency	Volume Limit
Daily Flow	KL/day	Daily	250

Monitoring Point 2

Location: Utilisation areas at Lockhart Showgrounds, Walter Day Park & Recreation Ground

Obtained: Every 80 days

Sampled: Ongoing

Item	Unit	Frequency	Volume Limit
Biochemical Oxygen Demand	Mg/L	40 days	
Residual Chlorine	Mg/L	40 days	
Faecal Coliforms	CFU/100ml	40 days	
Conductivity	uS/cm	40 days	
Total Nitrogen	Mg/L	40 days	
Nitrite/Nitrate	Mg/L	40 days	
Oil & Grease	Mg/L	40 days	
Phosphorus	Mg/L	40 days	
pH	Mg/L	40 days	
Total Keldahl Nitrogen	Mg/L	40 days	
Total Suspended Solids	Mg/L	40 days	
Daily Flow	KL/day	40 days	

Monitoring Point 3

Location: Flow meter at the Sewerage Treatment Works

Obtained: Daily

Sampled: Ongoing

Item	Unit	Frequency	Volume Limit
Daily Flow	KL/day	Daily	500

Monitoring Point 4

Location: Sampling point in final pond at the Sewerage Treatment Works, prior to discharge

Obtained: Every 80 days

Sampled: Ongoing

Item	Unit	Frequency	Volume Limit
Biochemical Oxygen Demand	Mg/L	80 days	20
Residual Chlorine	Mg/L	80 days	
Faecal Coliforms	CFU/100ml	80 days	
Conductivity	uS/cm	80 days	
Total Nitrogen	Mg/L	80 days	
Nitrite/Nitrate	Mg/L	80 days	
Oil & Grease	Mg/L	80 days	10
Phosphorus	Mg/L	80 days	
pH	Mg/L	80 days	
Total Keldahl Nitrogen	Mg/L	80 days	
Total Suspended Solids	Mg/L	80 days	30

Monitoring Point 5

Location: Utilisation area at Lockhart Central School

Obtained: 40 days during operating seasons

Sampled: Ongoing

Item	Unit	Frequency	Volume Limit
Biochemical Oxygen Demand	Mg/L	40 days	
Residual Chlorine	Mg/L	40 days	
Faecal Coliforms	CFU/100ml	40 days	
Conductivity	uS/cm	40 days	
Total Nitrogen	Mg/L	40 days	
Nitrite/Nitrate	Mg/L	40 days	
Oil & Grease	Mg/L	40 days	
Phosphorus	Mg/L	40 days	
pH	Mg/L	40 days	
Total Keldahl Nitrogen	Mg/L	40 days	
Total Suspended Solids	Mg/L	40 days	
Daily Flow	KL/day	40 days	